

# Folino Floor Plan

In Tumble Creek Estates from **\$749,900**

## PLAN DETAILS

Pricing from **\$749,900**

3 Beds 2.0 Baths 2,134 Sq Ft

1 Story 2 Car Garage



Craftsman Elevation - Side Entry

The Folino is an elegant ranch-style home with a comfortable design and alluring exterior. Step into the welcoming Foyer and continue to a private Study, two Bedrooms, and shared Hall Bath that set the tone for this sophisticated abode. The heart of this home is the open-concept Great Room, Kitchen, and Dining Room that making entertaining an effortless experience. The Kitchen boasts a large island with an overhang, offering ample seating for guests, a convenient corner pantry, and plenty of countertop space. The Great Room is bathed in natural light and leads to your backyard through a sliding door. Relax in style in your very own private haven as you enter the Owners' Suite, boasting a spacious walk-in closet and a luxurious ensuite Bath with a double vanity, linen closet, large shower, ... Read More at [tuskeshomes.com](http://tuskeshomes.com)

## PLAN FEATURES

- 3 Bedrooms
- 2 Bathrooms
- 2-Car Garage
- Starting at 2,134 Square Feet
- Ranch Style Floor Plan
- Kitchen Island with Granite or Quartz Countertops
- 42" Wellborn Kitchen Wall Cabinets with Crown Moulding, and Full Extension Dovetail Drawers
- GE Stainless Steel Range/Oven, Microwave, and Dishwasher
- Private Owners' Suite including Fully Tiled 4'x6' Shower with Quartz Bench in Owners' Bath
- Mudroom
- Study
- Optional Morning Room
- Optional Corner Fireplace

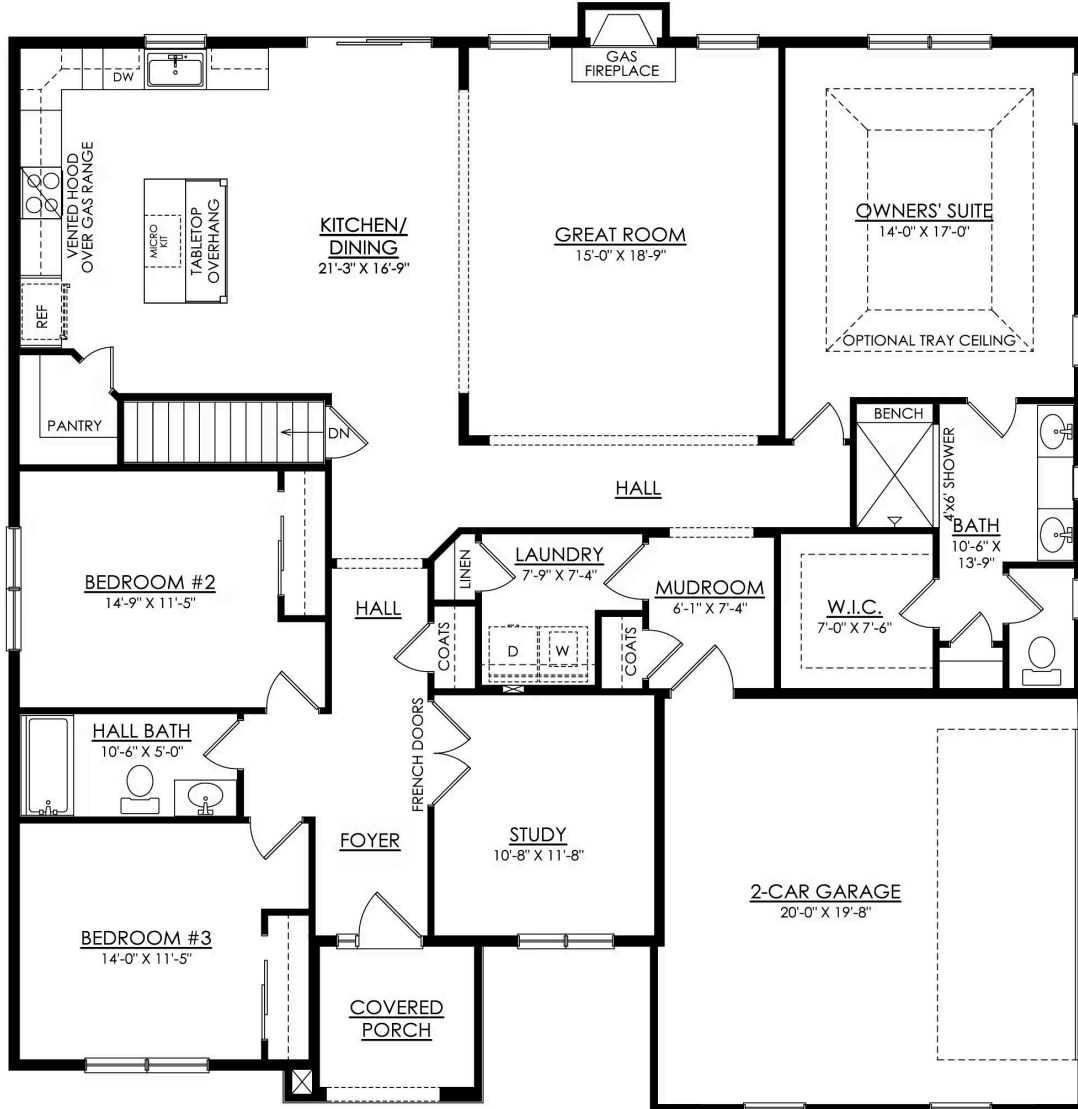
# Folino Floor Plan

In Tumble Creek Estates from \$749,900



# Folino Floor Plan

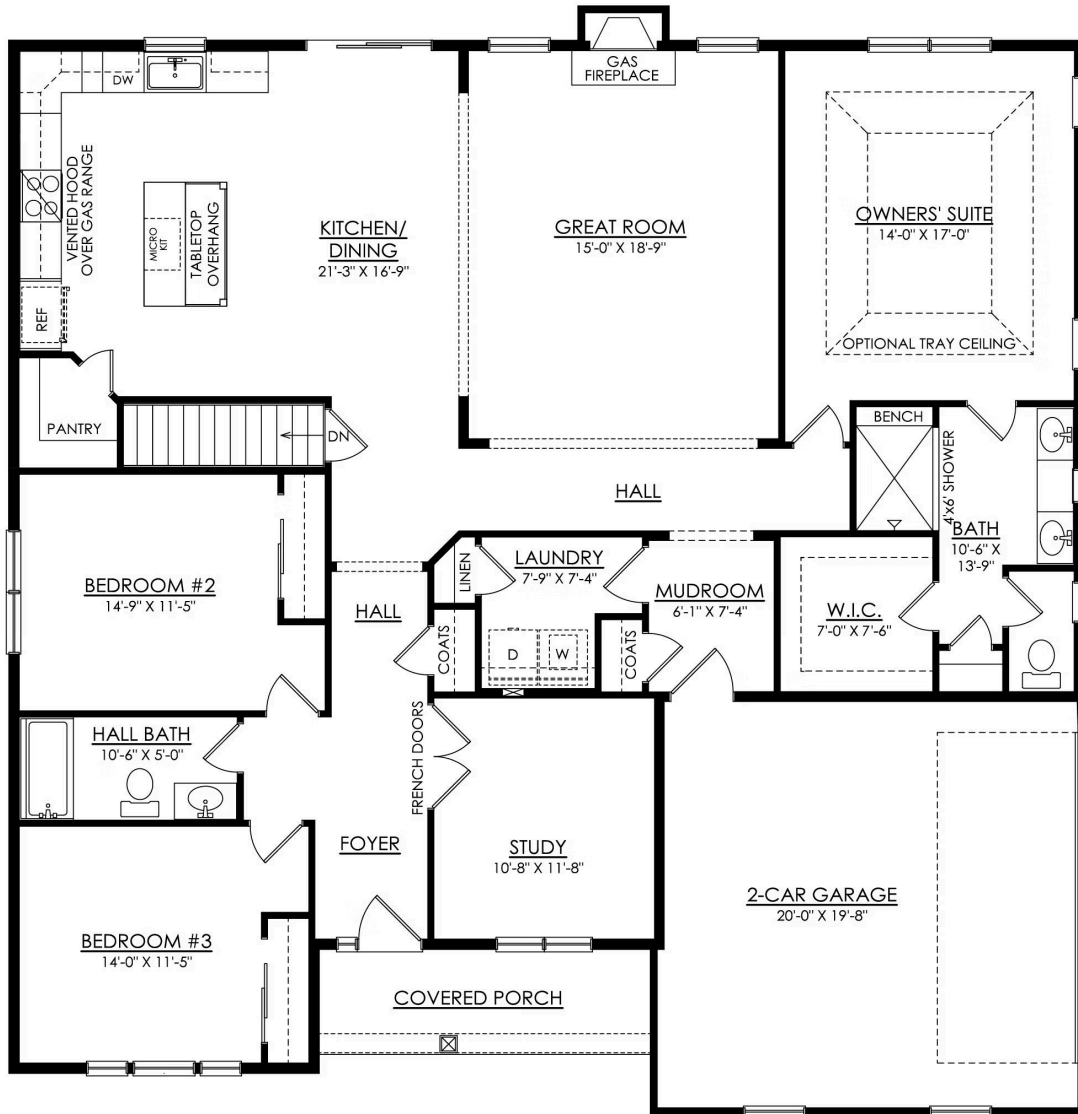
In Tumble Creek Estates from \$749,900



FOLINO COTTAGE SE  
1ST FLOOR PLAN  
HERITAGE

# Folino Floor Plan

In Tumble Creek Estates from \$749,900



## FOLINO CRAFTSMAN SE 1ST FLOOR PLAN HERITAGE



# Folino Floor Plan

In Tumble Creek Estates from **\$749,900**