

# Juniper Floor Plan

In Tumble Creek Estates from **\$889,900**

## PLAN DETAILS

Pricing from **\$889,900**

4 Beds 3.5 Baths 3,307 Sq Ft

2 Story 2 Car Garage



Juniper Farmhouse- Side Entry Garage

Elevate your lifestyle with the Juniper, offering the perfect balance of privacy and comfort for you and your family. An impressive two-story Foyer sets the tone for this home's spacious open-concept main living area. The Kitchen is a cook's dream, with an expanded island, a walk-in pantry, and a butler's pantry for serving drinks or snacks. The airy 2-story Great Room boasts a gas fireplace and plenty of windows for natural light. A private Study and Powder Room complete the 1st floor layout. Head up the open staircase to find an enormous Owners' Suite with a sitting area, a walk-in closet, and a private Bath. Additionally, a Guest Suite with its own Bath, two additional Bedrooms that share a Jack-n-Jill bath, and a convenient laundry room can also be found on the 2nd floor. Som ... Read More at [tuskeshomes.com](http://tuskeshomes.com)

## PLAN FEATURES

- 4 Bedrooms
- 3.5 Bathrooms
- 2-Car Garage
- Starting at 3,307 Square Feet
- 42" Wellborn Kitchen Wall Cabinets with Crown Moulding, and Full Extension Dovetail Drawers
- Kitchen Island with Quartz or Granite

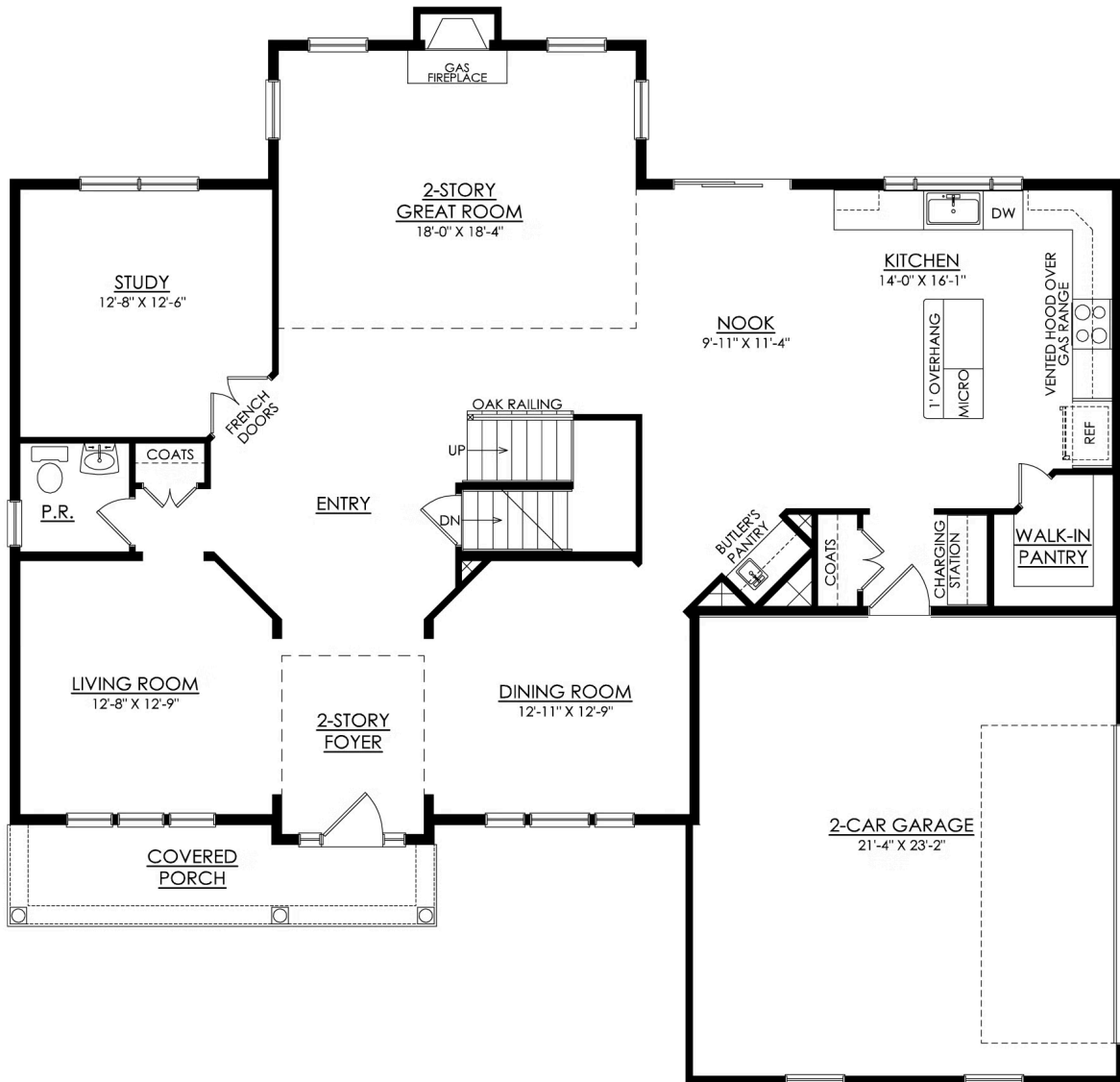
# Juniper Floor Plan

In Tumble Creek Estates from \$889,900



# Juniper Floor Plan

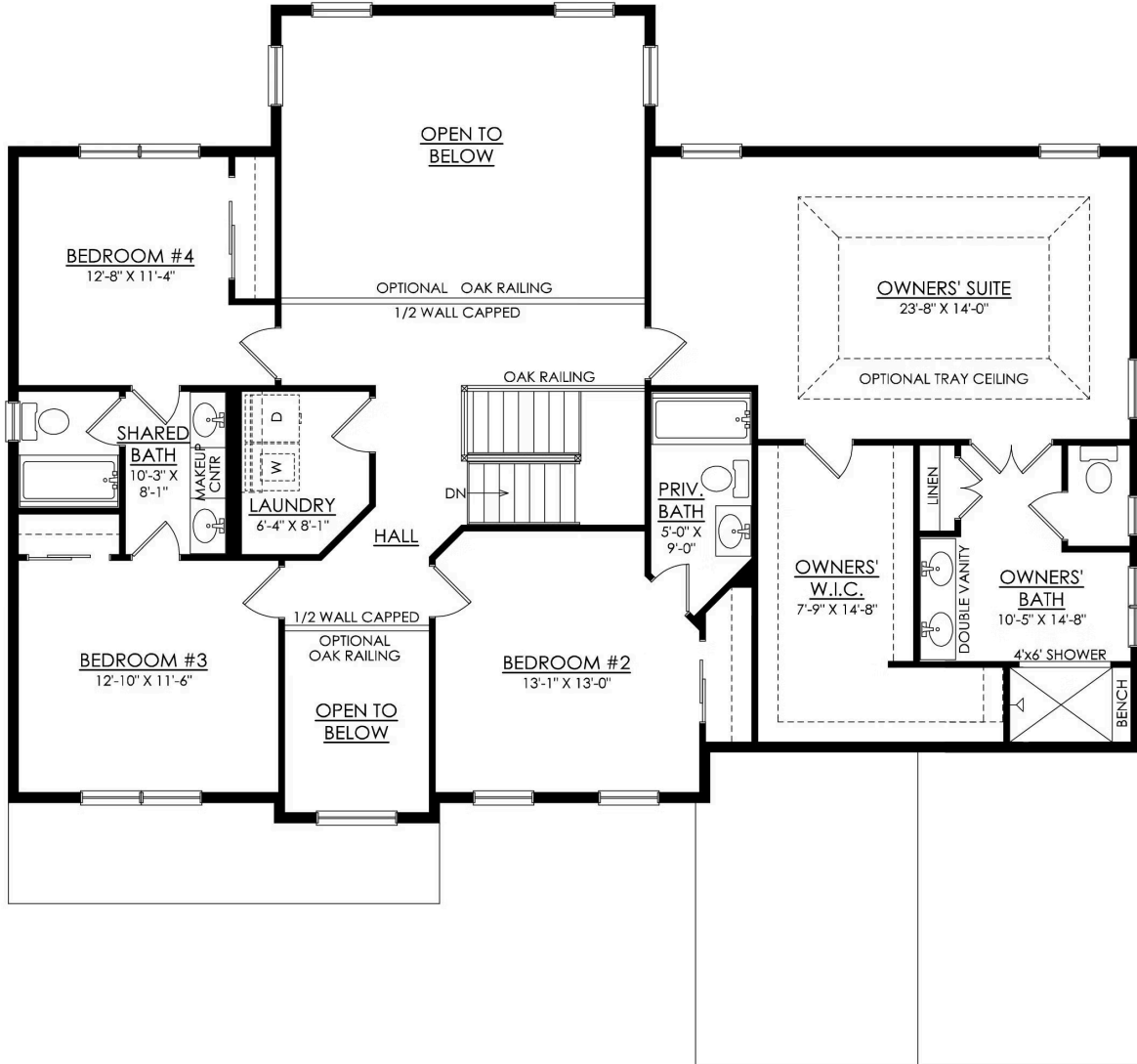
In Tumble Creek Estates from \$889,900



## JUNIPER FARMHOUSE 1ST FLOOR PLAN HERITAGE

# Juniper Floor Plan

In Tumble Creek Estates from \$889,900



## JUNIPER FARMHOUSE 2ND FLOOR PLAN HERITAGE



# Juniper Floor Plan

In Tumble Creek Estates from **\$889,900**



# Juniper Floor Plan

In Tumble Creek Estates from **\$889,900**