

103 Timber Trail #50

Easton, PA 18045

HOME DETAILS

3 Beds 2.5 Baths 2,033 Sq Ft
 2 Story 2 Car Garage



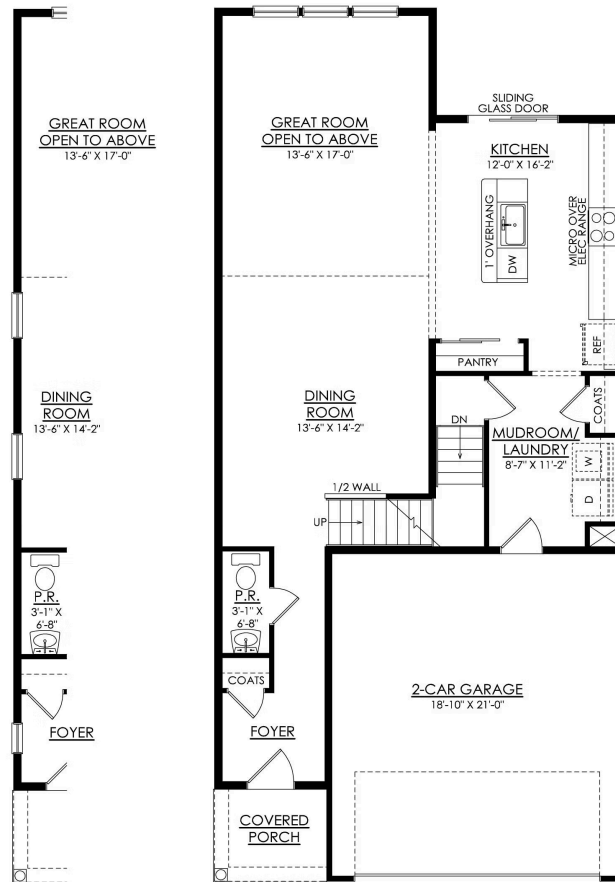
Welcome to the Grayson, a perfect home for those seeking ample living space, modern amenities, and comfortable living. With its open concept design and Great Room with vaulted ceilings, this spacious floor plan will have you feeling right at home. The Kitchen is a chef's dream, with its ample counter space, island with seating, and a sliding glass door leading to the outdoors. Also found... Read More at tuskeshomes.com

HOME FEATURES

- 3 Bedrooms
- 2.5 Baths
- 2-Car Garage
- Owner's Suite with Private Bath including Walk-In Closet, 3' x 5' Shower, and Double Vanity
- 12' x 12' Trex Deck
- 2-Story Great Room with Vaulted Ceiling
- 2nd Floor Loft
- Contemporary Chic Curated Collection
- Premium Plus Electrical Package including Enhanced LED Recessed Lighting in Great Room, Kitchen, and Owners' Suite
- GE Stainless Steel Fridge with Ice & Water Dispenser Included
- 9' Walk-Out Basement with Egress Window and Rough-In Full Bathroom

103 TIMBER TRAIL #50

Easton, PA 18045

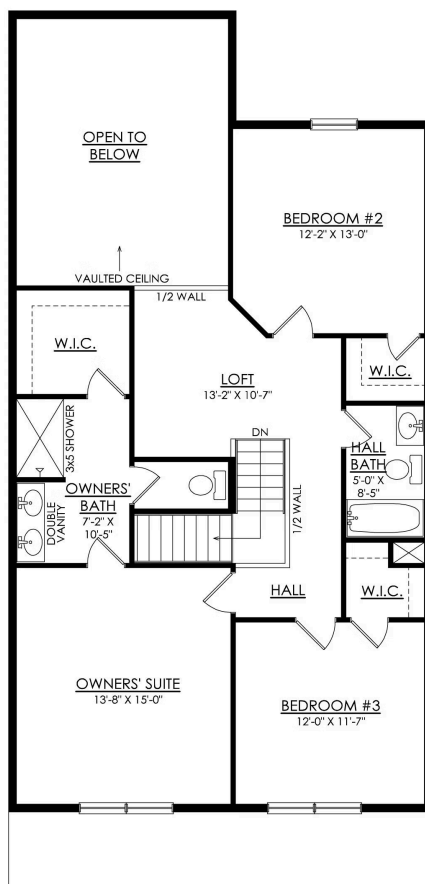


GRAYSON
END UNIT

GRAYSON- 1ST FLOOR
STARTING AT 2007 SF

103 TIMBER TRAIL #50

Easton, PA 18045



GRAYSON- 2ND FLOOR
STARTING AT 2007 SF