

105 Timber Trail #51

Easton, PA 18045

HOME DETAILS

3 Beds
 2.5 Baths
 2,033 Sq Ft
 2 Story
 2 Car Garage



Grayson

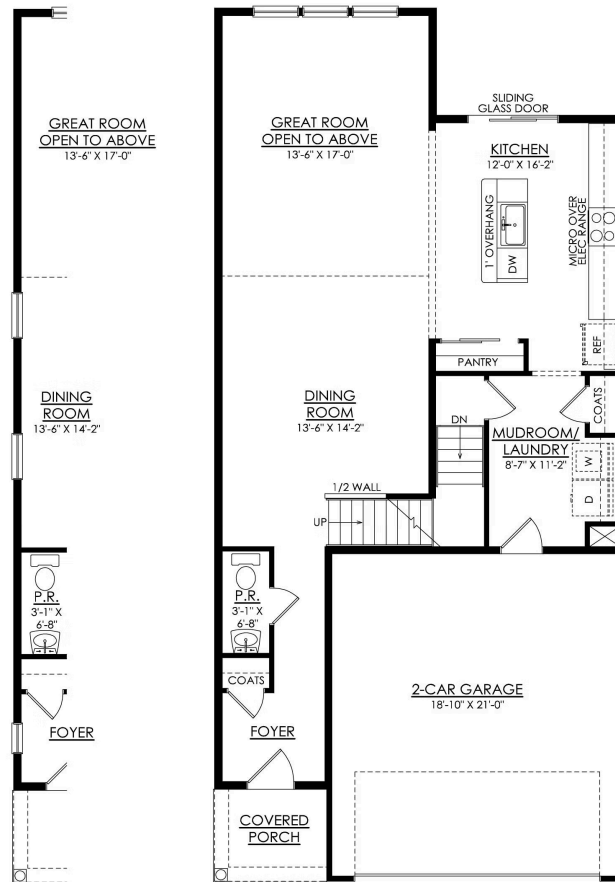
Welcome to the Grayson, a perfect home for those seeking ample living space, modern amenities, and comfortable living. With its open concept design and Great Room with vaulted ceilings, this spacious floor plan will have you feeling right at home. The Kitchen is a chef's dream, with its ample quartz counter space, tile backsplash, island with seating, and a sliding glass door leadi... Read More at tuskeshomes.com

HOME FEATURES

- 3 Bedrooms
- 2.5 Baths
- 2-Car Garage
- Owner's Suite with Private Bath including Walk-In Closet, 3' x 5' Shower, and Double Vanity
- 2nd Floor Loft
- 9' Walk-Out Basement with Egress Window and Rough-In Full Bathroom
- 11' x 12' Trex Deck
- Oak Steps and Open Railings
- Vaulted Ceilings with 2-Story Great Room
- Contemporary Chic Curated Collection
- Premium Plus Electrical Package
- GE Stainless Steel Fridge with Ice & Water Dispenser Included

105 TIMBER TRAIL #51

Easton, PA 18045

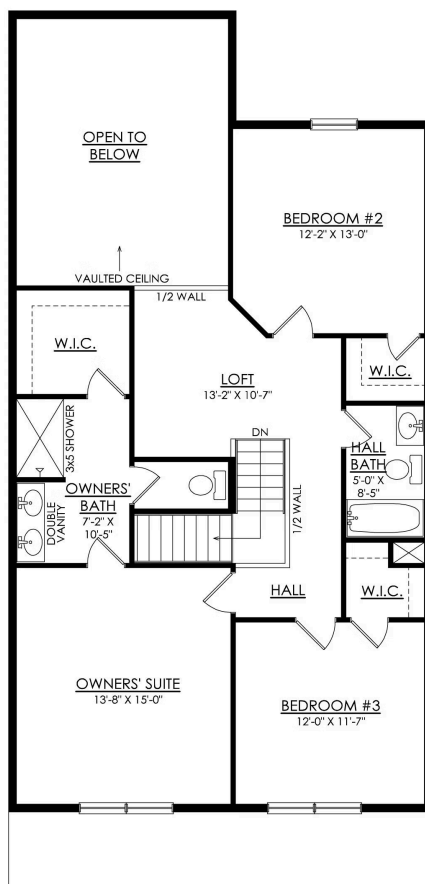


GRAYSON
END UNIT

GRAYSON- 1ST FLOOR
STARTING AT 2007 SF

105 TIMBER TRAIL #51

Easton, PA 18045



GRAYSON- 2ND FLOOR
STARTING AT 2007 SF