

113 Timber Trail #54

Easton, PA 18045

HOME DETAILS

3 Beds 2.5 Baths 1,906 Sq Ft

2 Story 2 Car Garage



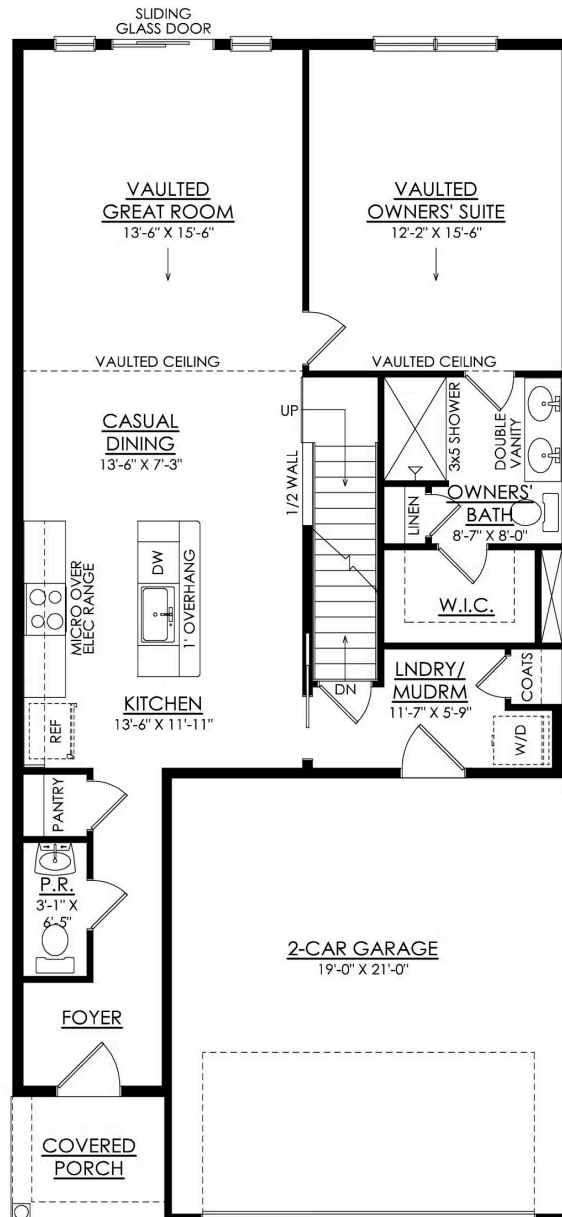
Additional Details About this Quick Delivery Home Coming Soon!The Griffin's plan offers flexible living spaces that are perfect for multi-generational families or those who prefer extra privacy. On the first floor, there is a well-appointed Powder Room and open concept floor plan. The Kitchen flows into the Casual Dining area, featuring an island with an overhang, plenty of storage in th... Read More at tuskeshomes.com

HOME FEATURES

- 3 Bedrooms
- 2.5 Bathrooms
- 2-Car Garage
- 9' Full Basement with Egress Window and Well Cover
- Spacious 2-Story Great Room with Vaulted Ceiling
- Open Kitchen and Dining Space
- Large 1st Floor Owners' Suite with Vaulted Ceiling and Private Bath
- 1st Floor Laundry Room
- Modern Farmhouse Luxe Plus Design Collection including Oak Stained Treads with Painted Risers & Stringers, Oak Railing, 2-Panel Interior Doors, and more
- Premium Plus Electrical Package with 4 LED Recessed Lights in Kitchen, Great Room, and Owners' Suite

113 TIMBER TRAIL #54

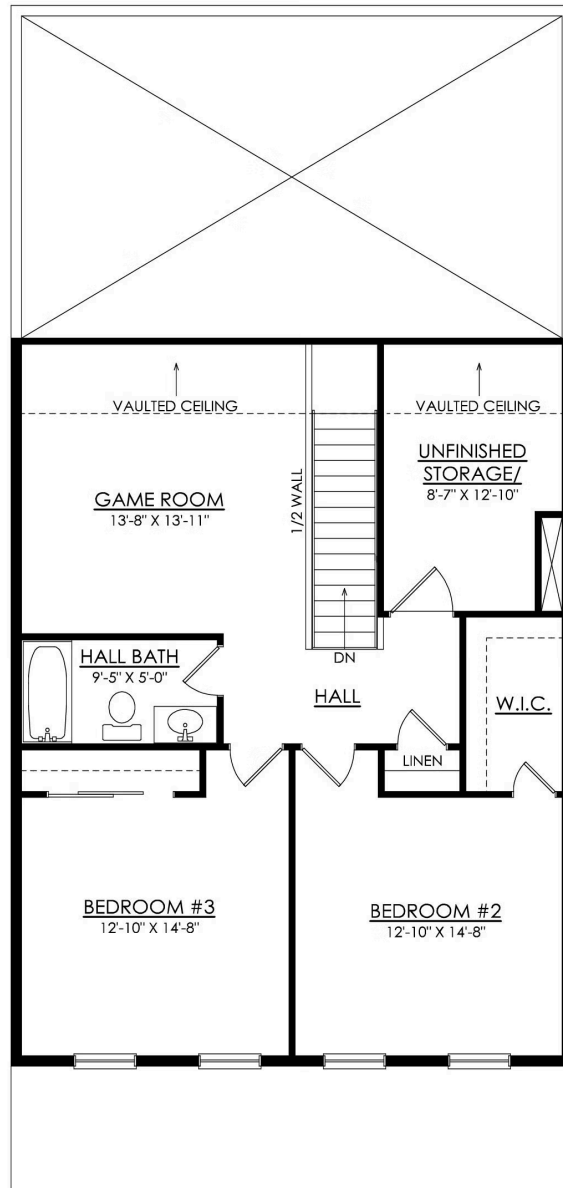
Easton, PA 18045



GRIFFIN- 1ST FLOOR
STARTING AT 1906 SF

113 TIMBER TRAIL #54

Easton, PA 18045



GRIFFIN- 2ND FLOOR
STARTING AT 1906 SF