

# 115 Timber Trail #55

Easton, PA 18045

## HOME DETAILS

3 Beds 2.5 Baths 2,033 Sq Ft

2 Story 2 Car Garage



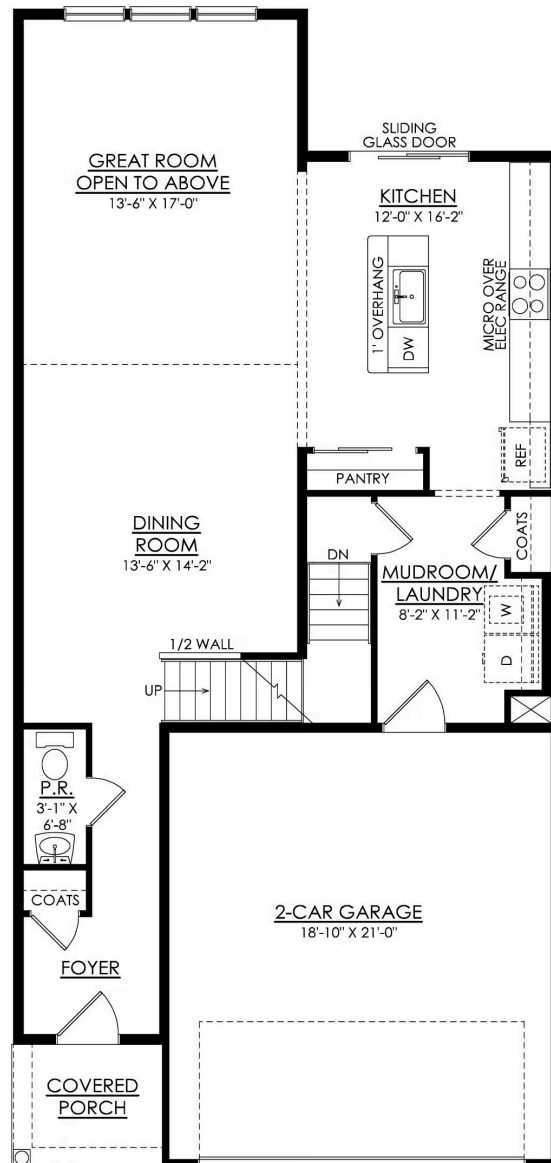
Additional Details About this Quick Delivery Home Coming Soon! Welcomed to the Grayson, a perfect home for those seeking ample living space, modern amenities, and comfortable living. With its open concept design and Great Room with vaulted ceilings, this spacious floor plan will have you feeling right at home. The Kitchen is a chef's dream, with its ample counter space, island with seating... Read More at [tuskeshomes.com](https://tuskeshomes.com)

## HOME FEATURES

- 3 Bedrooms
- 2.5 Bathrooms
- 2-Car Garage
- 9' Full Basement
- 12'x12' Trex Deck with White Vinyl Railing and Steps to Grade
- Open-Concept 2-Story Great Room, Kitchen, and Dining Room
- 1st Floor Laundry
- Spacious Owners' Suite with Private Bath
- Walk-In Closets in Each Bedroom
- Premium Plus Electrical Package with Enhanced LED Recessed Lighting in Kitchen, Great Room, and Owners' Suite\*
- Modern Farmhouse Design Collection including Kitchen Backsplash, Microwave Vented to Outside, Enhanced Moen Faucets, and more\*

# 115 TIMBER TRAIL #55

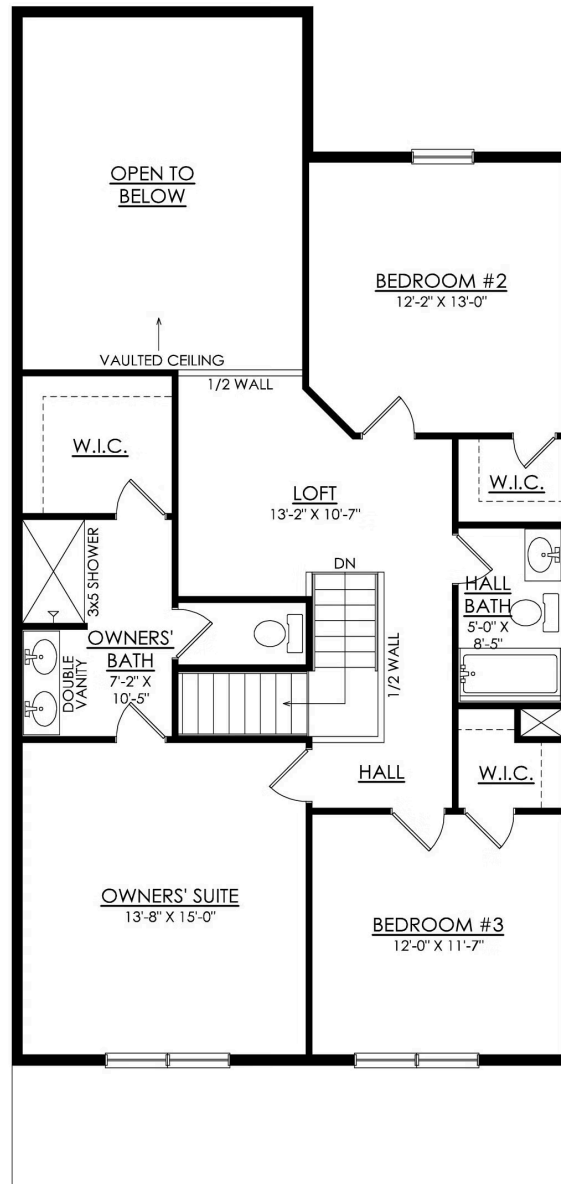
Easton, PA 18045



## GRAYSON- 1ST FLOOR STARTING AT 2033 SF

# 115 TIMBER TRAIL #55

Easton, PA 18045



## GRAYSON- 2ND FLOOR STARTING AT 2033 SF