

14 Fox Crossing Rd #21

Easton, PA 18045

HOME DETAILS

3 Beds 2.5 Baths 1,906 Sq Ft

2 Story 2 Car Garage



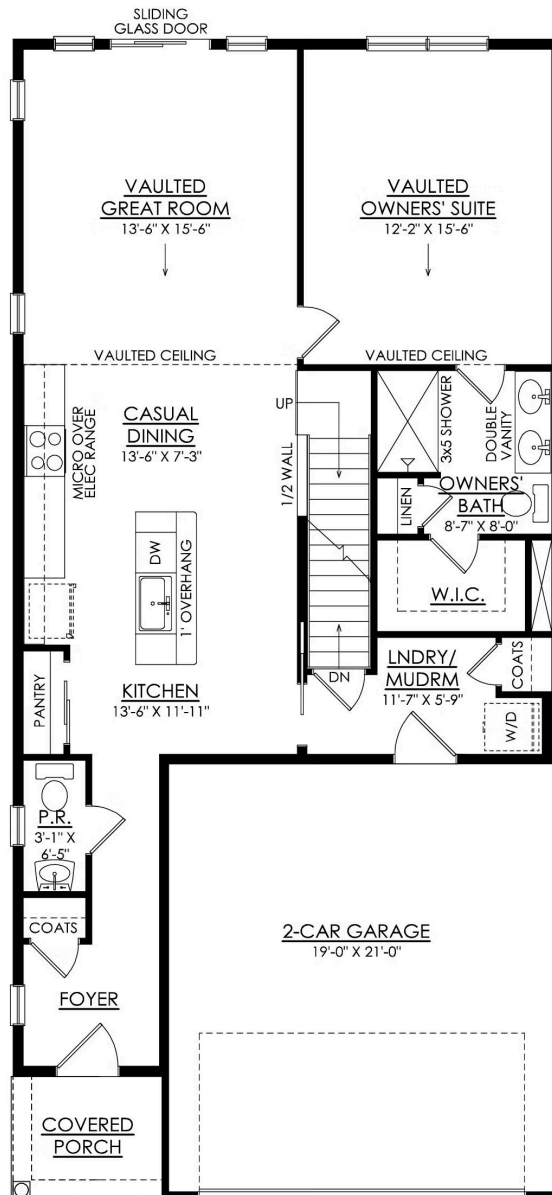
Additional Details about the Quick Delivery Home Coming Soon! The Griffin's plan offers flexible living spaces that are perfect for multi-generational families or those who prefer extra privacy. On the first floor, there is a well-appointed Powder Room and open concept floor plan. The Kitchen flows into the Casual Dining area, featuring an island with an overhang, plenty of storage in the... Read More at tuskeshomes.com

HOME FEATURES

- 3 Bedrooms
- 2.5 Bathrooms
- 2-Car Garage
- End Unit
- Spacious Great Room with Vaulted Ceiling
- 1st Floor Owners' Suite with Vaulted Ceiling
- 2nd Floor Game Room
- 1st Floor Laundry Room
- 9' Walkout Basement
- 12'x12' Trex Deck with White Vinyl Railing
- Modern Farmhouse Luxe Interior Design Collection: Includes Kitchen Backsplash, Microwave Vented to the Outside, Moen Faucet Enhancements, and more.

14 FOX CROSSING RD #21

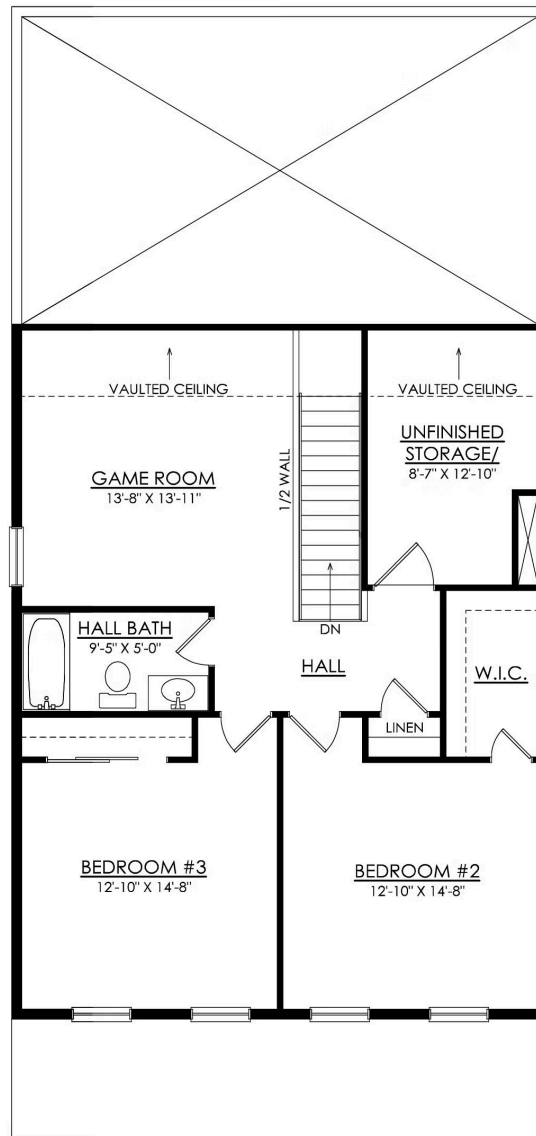
Easton, PA 18045



GRIFFIN- 1ST FLOOR
STARTING AT 1906 SF
END UNIT

14 FOX CROSSING RD #21

Easton, PA 18045



GRIFFIN- 2ND FLOOR
STARTING AT 1906 SF
END UNIT