






64 Timber Trail #93

Easton, PA 18045

HOME DETAILS

 3 Beds
  2.5 Baths
  1,830 Sq Ft
 2 Story
  1 Car Garage



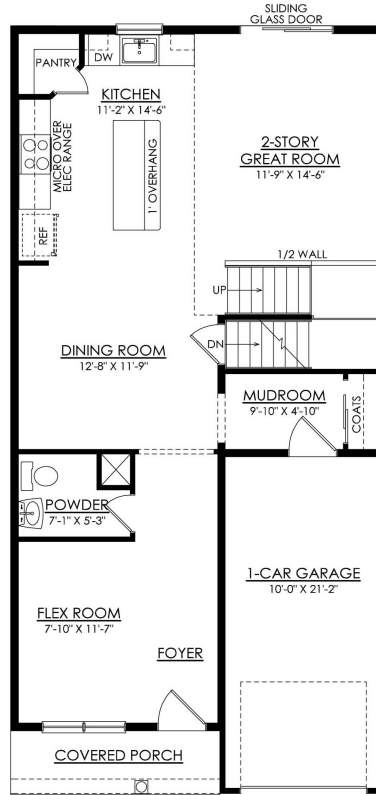
Discover the Alpine, a well-designed townhome offering ample living space. As you enter through the charming covered front porch, you're greeted by a warm Foyer and Flex Room that can serve as a study or extra lounge space. Pass by the convenient Powder Room to the elegant Dining Room, ideal for hosting meals and dinner parties. The Kitchen boasts a large island with overhang for extra s... [Read More at tuskeshomes.com](#)

HOME FEATURES

- 3 Bedrooms
- 2.5 Bathrooms
- 1-Car Garage
- 1830 Square Feet
- Covered Front Porch
- 2-Story Great Room
- Kitchen Island with Overhang for Seating
- Pantry
- Flex Room
- Mudroom
- Owner's Suite with Private Bathroom
- Second Floor Laundry Room

64 TIMBER TRAIL #93

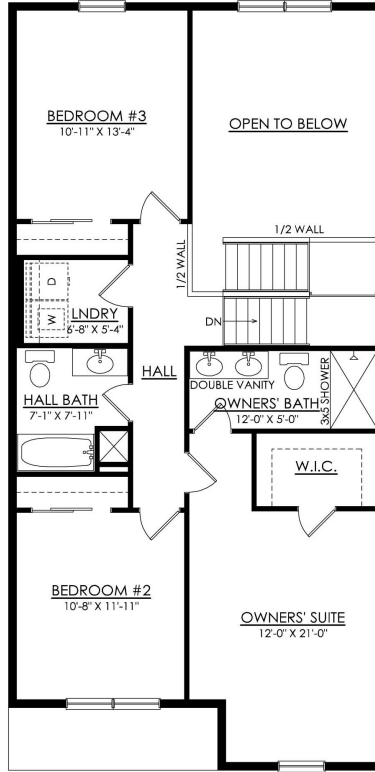
Easton, PA 18045



ALPINE- 1ST FLOOR
STARTING AT 1830 SF

64 TIMBER TRAIL #93

Easton, PA 18045



ALPINE- 2ND FLOOR
STARTING AT 1830 SF