


95 Timber Trail #47

Easton, PA 18045

HOME DETAILS

 3 Beds  2.5 Baths  2,033 Sq Ft

 2 Story  2 Car Garage



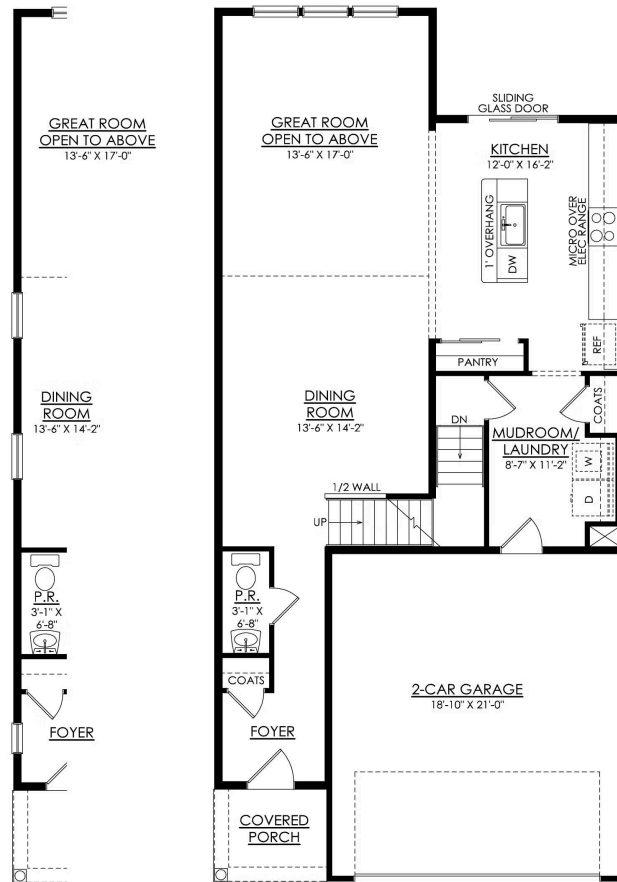
Welcome to the Grayson, a perfect home for those seeking ample living space, modern amenities, and comfortable living. With its open concept design and 2-story Great Room, this spacious floor plan will have you feeling right at home. The Kitchen is a chef's dream, with its ample counter space, island with seating, and a sliding glass door leading to the outdoors. Also found on the first ... Read More at tuskeshomes.com

HOME FEATURES

- 3 Bedrooms
- 2.5 Bathrooms
- 2-Car Garage
- Covered Front Porch
- Open-Concept Kitchen, Dining, and Great Room
- 2-Story Great Room
- Kitchen Island with Overhang for Seating
- Range Vented to the Outside and GE Stainless Steel Fridge with Ice & Water Dispenser Included
- Pantry
- Rough-in Full Bathroom in Basement
- Modern Farmhouse Luxe Collection

95 TIMBER TRAIL #47

Easton, PA 18045

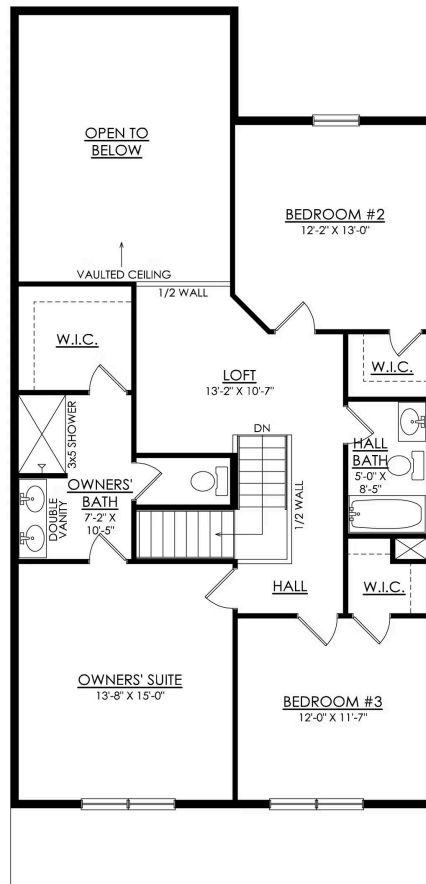


GRAYSON
END UNIT

GRAYSON- 1ST FLOOR
STARTING AT 2007 SF

95 TIMBER TRAIL #47

Easton, PA 18045



GRAYSON- 2ND FLOOR
STARTING AT 2007 SF