

Alpine Floor Plan

In Wolf's Run

PLAN DETAILS

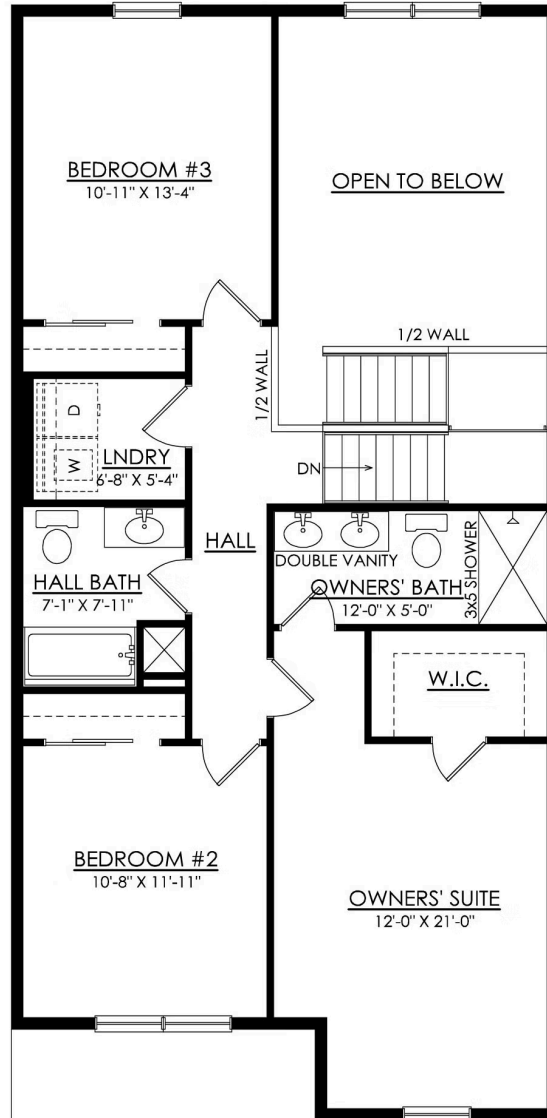
3 Beds
 2.5 Baths
 1,830 Sq Ft
 2 Story
 1 Car Garage



Discover the Alpine, a well-designed townhome offering ample living space. As you enter through the charming covered front porch, you're greeted by a warm Foyer and Flex Room that can serve as a study or extra lounge space. Pass by the convenient Powder Room to the elegant Dining Room, ideal for hosting meals and dinner parties. The Kitchen boasts a large island with overhang for extra seating, and opens up to the spacious 2-story Great Room. Enjoy a fresh breeze through the sliding door leading to the backyard, and make use of the attached 1-car garage and well-situated mudroom on the first floor. Head upstairs to the spacious Owner's Suite, complete with a walk-in closet and a private bath featuring a double vanity and a relaxing 3' x 5' shower. The second floor also includes two addition ... [Read More at tuskeshomes.com](https://www.tuskeshomes.com)

Alpine Floor Plan

In Wolf's Run

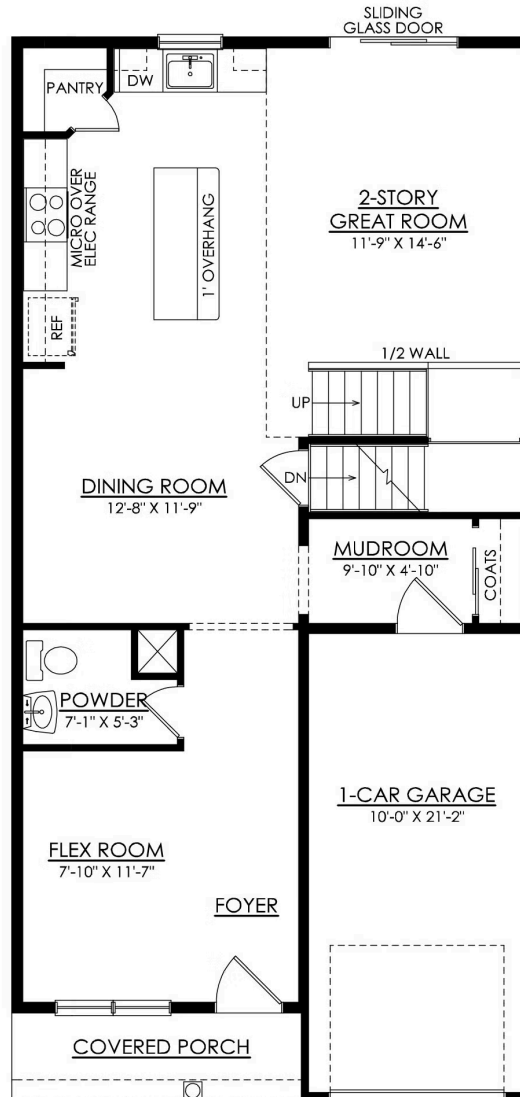


ALPINE- 2ND FLOOR

STARTING AT 1830 SF

Alpine Floor Plan

In Wolf's Run



ALPINE- 1ST FLOOR

STARTING AT 1830 SF