






# Grayson Floor Plan

In Wolf's Run from \$471,900

## PLAN DETAILS

Pricing from \$471,900

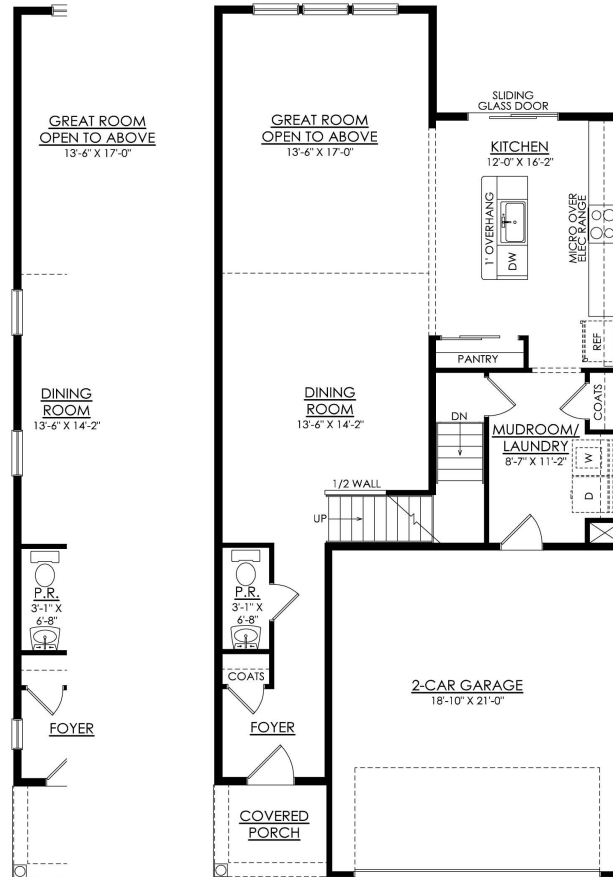
 3 Beds
  2.5 Baths
  2,033 Sq Ft  
 2 Story
  2 Car Garage



Welcomed to the Grayson, a perfect home for those seeking ample living space, modern amenities, and comfortable living. With its open concept design and Great Room with vaulted ceilings, this spacious floor plan will have you feeling right at home. The Kitchen is a chef's dream, with its ample counter space, island with seating, and a sliding glass door leading to the outdoors. Also found on the first floor is a welcoming Foyer, convenient Powder Room, and a spacious Mudroom just off the 2-car garage that's a perfect storage area for items you need on the go. Head upstairs to relax in the comfort of the Owner's Suite, complete with a spa-like Owner's Bath and a large walk-in closet. The 2nd floor Loft provides a flexible space that can be used as a home office, playroom, or a cozy reading n ... Read More at [tuskeshomes.com](https://tuskeshomes.com)

# Grayson Floor Plan

In Wolf's Run from \$471,900

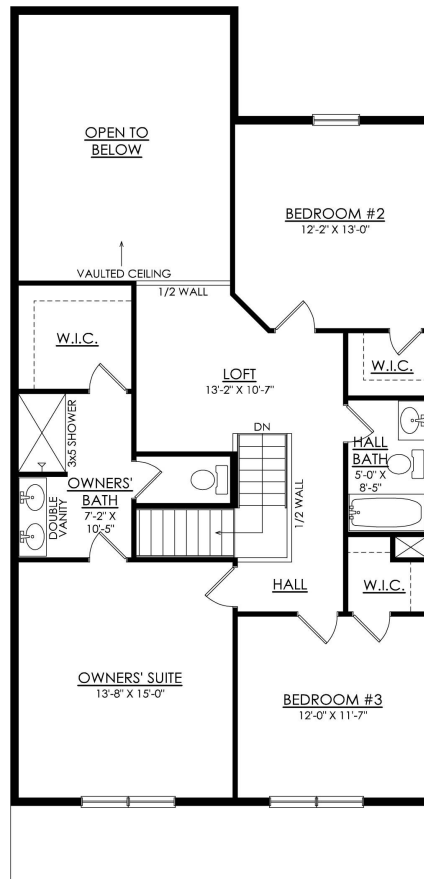


**GRAYSON**  
END UNIT

**GRAYSON- 1ST FLOOR**  
STARTING AT 2007 SF

# Grayson Floor Plan

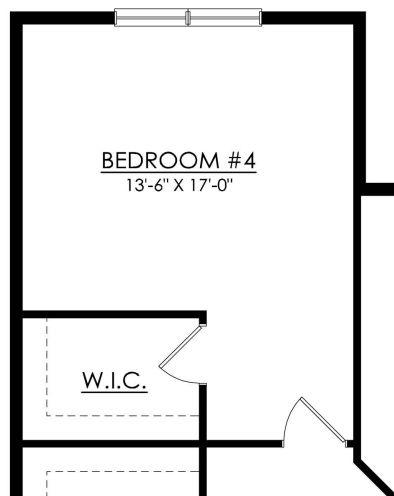
In Wolf's Run from \$471,900



**GRAYSON- 2ND FLOOR**  
STARTING AT 2007 SF

# Grayson Floor Plan

In Wolf's Run from \$471,900



**GRAYSON  
OPT. 4TH BEDROOM  
ADDS 246 SF**