

# Griffin Floor Plan

In Wolf's Run from \$456,900

PLAN DETAILS

Pricing from \$456,900

- 3 Beds
  2.5 Baths
  1,906 Sq Ft
- 2 Story
  2 Car Garage



The Griffin's plan offers flexible living spaces that are perfect for multi-generational families or those who prefer extra privacy. On the first floor, there is a well-appointed Powder Room and open concept floor plan. The Kitchen flows into the Casual Dining area, featuring an island with an overhang, plenty of storage in the pantry, and beautiful granite or quartz countertops. The Great Room boasts a vaulted ceiling and sliding glass doors, inviting natural light and outdoor access. Retreat to the 1st-floor Owner's Suite, also with a vaulted ceiling and a luxurious Owner's Bath including a double vanity, 3' x 5' shower, and walk-in closet. A well-located Laundry Room and Mudroom can also be found on the main floor of this home near the 2-Car Garage. On the second floor, a Game Room provi ... Read More at [tuskeshomes.com](https://tuskeshomes.com)

# Griffin Floor Plan

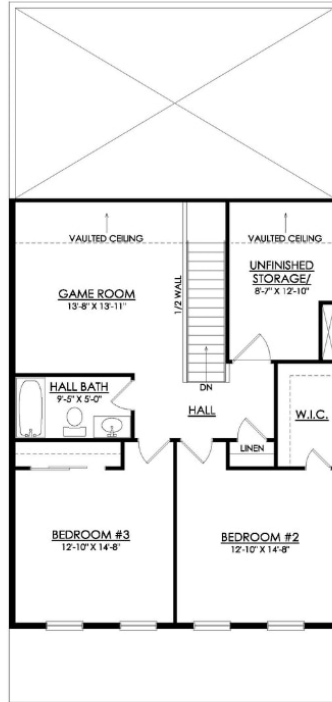
In Wolf's Run from \$456,900



**GRIFFIN- 1ST FLOOR**  
STARTING AT 1906 SF

# Griffin Floor Plan

In Wolf's Run from \$456,900



**GRIFFIN- 2ND FLOOR**  
STARTING AT 1906 SF