






1901 Meadows Road #46

Lehigh Valley, PA 18020

HOME DETAILS

 5 Beds
  5.5 Baths
  5,831 Sq Ft
 2 Story
  3 Car Garage



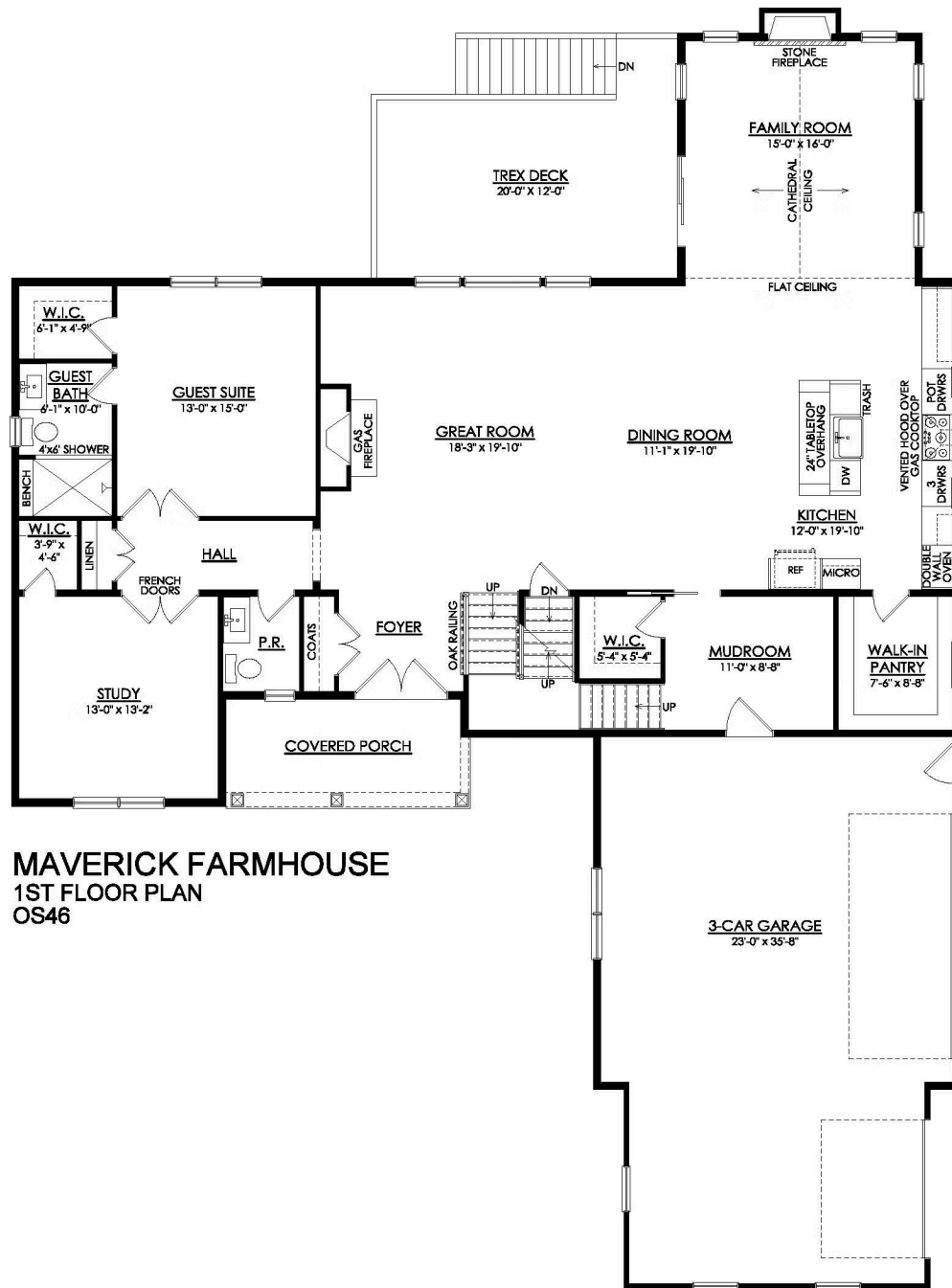
The Maverick is an architectural gem that embodies modern farmhouse style with its spacious 5,800+ sq ft. floor plan. Perfect for multi-generational living, this home boasts multiple common areas and bedrooms on both floors, allowing for maximum comfort and convenience. Its sleek, contemporary design seamlessly integrates function and style, making it the perfect place for families to cr...
Read More at tuskeshomes.com

HOME FEATURES

- 5 Bedrooms
- 5.5 Bathrooms
- 3-Car Garage
- 9' Walkout Finished Basement with Full Bath and Additional Flex Room
- 12' X 20' Trex Deck with White Vinyl Railing
- Hardie Board Siding
- Oversized 3+ Acre Homesite
- Spacious Owner's Suite with Private Bath including Soaking Tub and 4'x6' Shower
- First Floor In-law Suite with Private Full Bath
- Bronzed Gold Faucets in Kitchen and Bath
- Granite Kitchen Countertops with GE Profile WIFI Double Wall Oven and GE Profile 36" Built-In Gas Cooktop
- Finished 2nd Floor Game Room

1901 MEADOWS ROAD #46

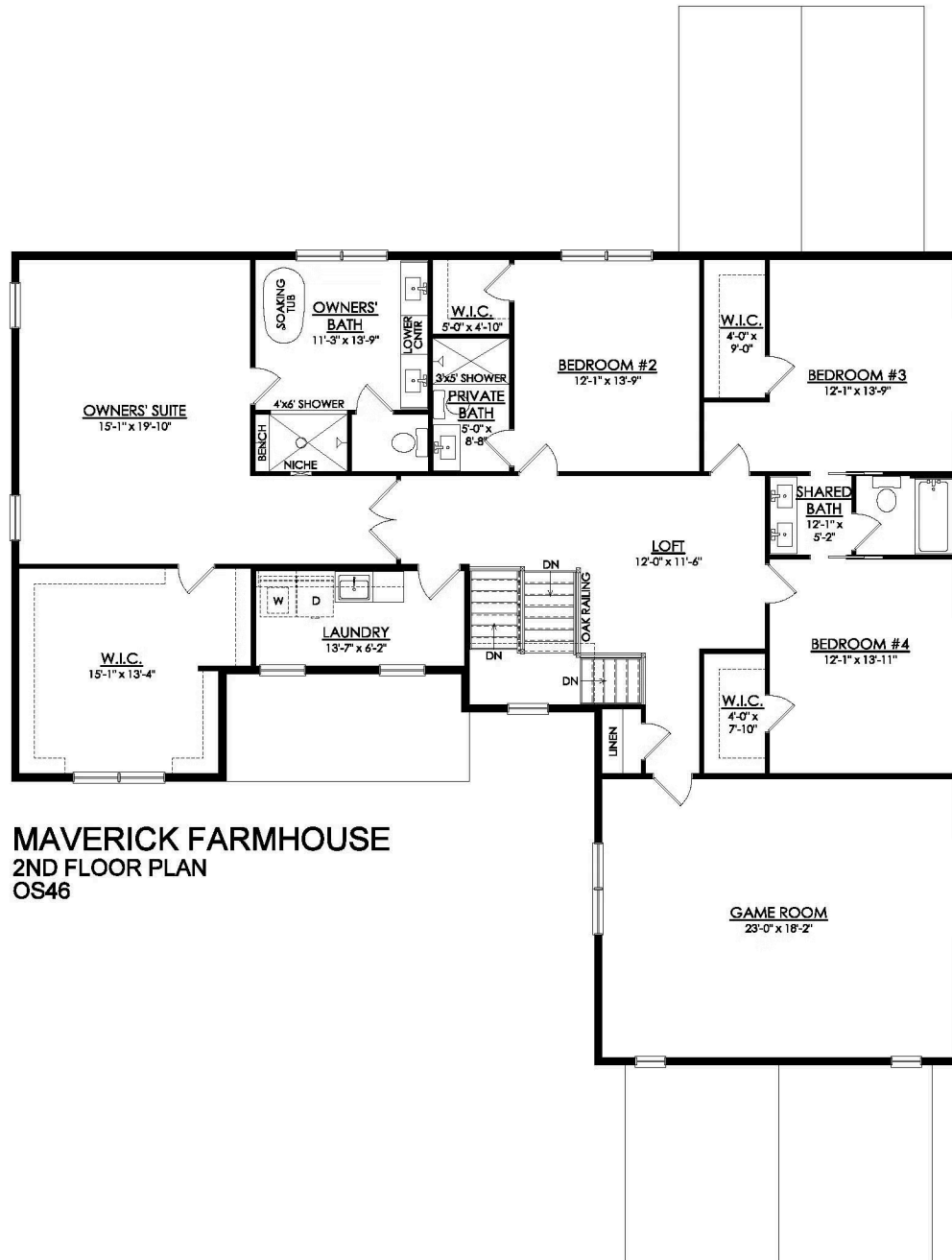
Lehigh Valley, PA 18020



MAVERICK FARMHOUSE
1ST FLOOR PLAN
OS46

1901 MEADOWS ROAD #46

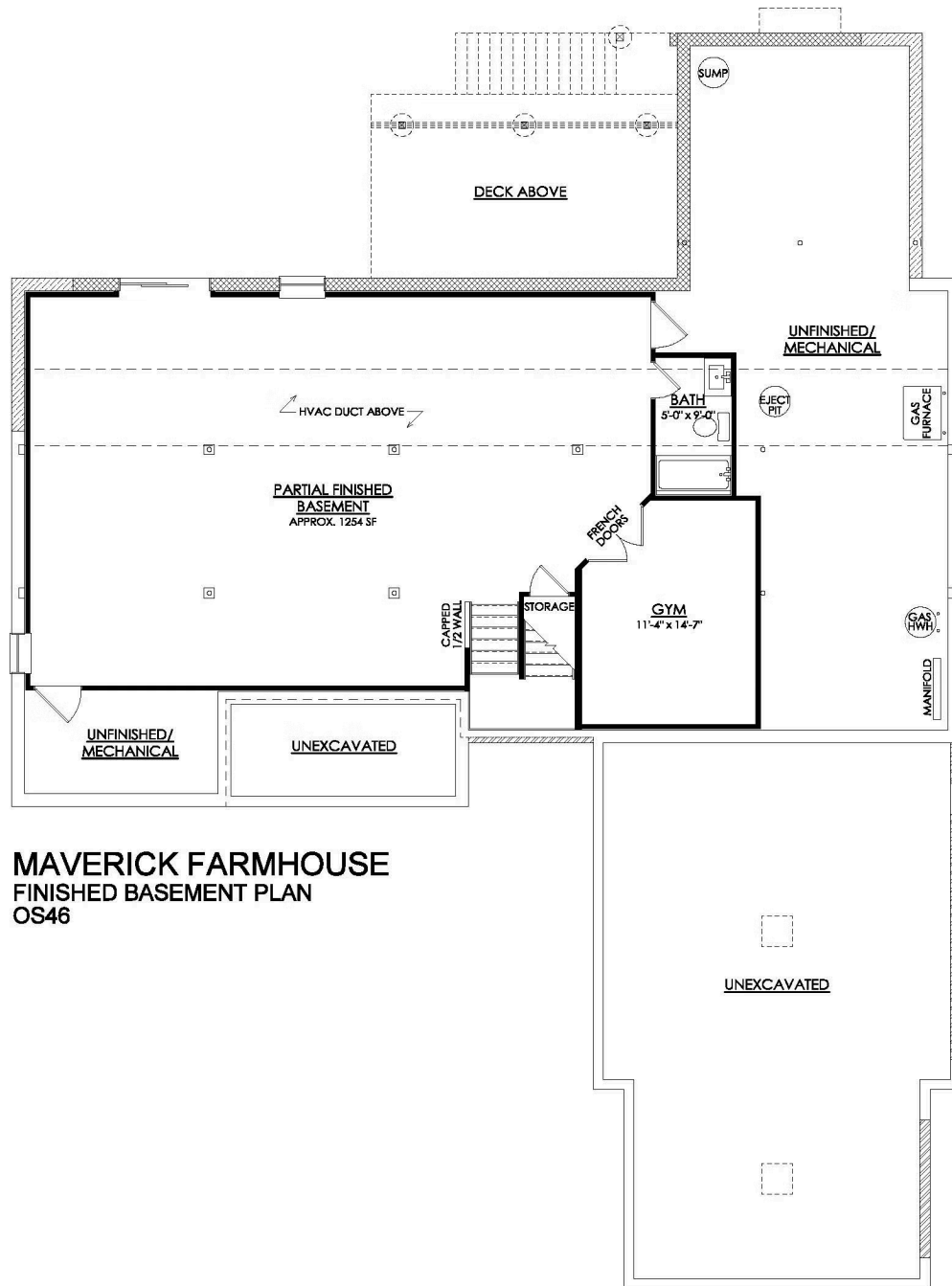
Lehigh Valley, PA 18020



MAVERICK FARMHOUSE
2ND FLOOR PLAN
OS46

1901 MEADOWS ROAD #46

Lehigh Valley, PA 18020



MAVERICK FARMHOUSE
FINISHED BASEMENT PLAN
OS46