






110 Scarlet Road #12

Mountain Top, PA 18707

HOME DETAILS

 4 Beds
  2.5 Baths
  2,648 Sq Ft
 2 Story
  2 Car Garage



HC-12 Exterior

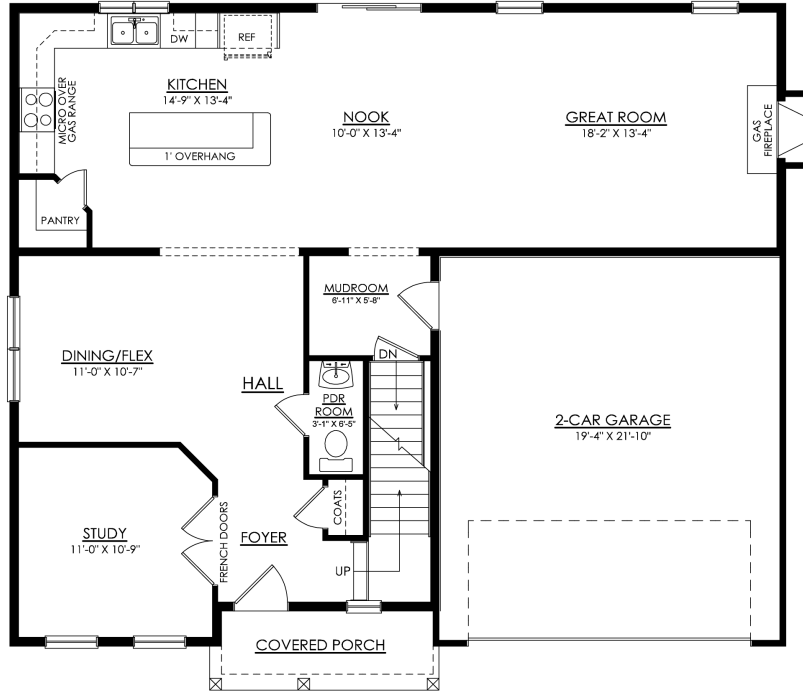
Designed with functionality in mind, the Morgan features a flowing, open-concept Kitchen, Dining Nook, and Great Room that are the heart of this home. As you enter through the 2 Car Garage, you'll find a Mudroom that's perfect for dropping off items like shoes, coats, or anything else you'd prefer to store. Just beyond, the expansive main living area awaits. Windows line the wall of the ...
 Read More at tuskeshomes.com

HOME FEATURES

- 4 Bedrooms
- 2.5 Baths
- 2 Car Garage
- 2648 SQFT
- 12' x 16' Pressure Treated Deck with Steps to Grade
- Accent Lighting Package - Kitchen/Great Room
- Luxury Vinyl Planking added to Great Room & Study
- 39" Direct Vent Fireplace with Windows added on either side
- 4' x 6' Tiled Shower with Bench in Owner's Bath

110 SCARLET ROAD #12

Mountain Top, PA 18707



MORGAN COUNTRY
STARTING AT 2648 SF

1ST FLOOR PLAN

110 SCARLET ROAD #12

Mountain Top, PA 18707



MORGAN COUNTRY
STARTING AT 2648 SF

2ND FLOOR PLAN