

Breckenridge Floor Plan

In Hillcrest Estates at Mountain Top from **\$548,900**

PLAN DETAILS

Pricing from **\$548,900**

4 Beds 2.5 Baths 2,954 Sq Ft

2 Story 2 Car Garage



Farmhouse Elevation

The Breckenridge is a luxurious single-family home with over 2,900 sq ft of living space, perfect for those who appreciate fine living and require extra room. Enjoy entertaining guests in the beautiful 2-story Great Room or cozy up in the nearby Living Room. The spacious Kitchen features ample counter space with versatile configurations. Host formal dinners in the elegant Dining Room or work from home in the private Study with a convenient nearby Powder Room. The lavish Owner's Suite is situated on the second floor, offering a Sitting Room and a private full Bathroom for maximum comfort. Additionally, two more generously sized Bedrooms share a hall bath, with a convenient second-floor Laundry Room nearby. Some images, videos, virtual tours shown may be from a previously built Tuskes home of ... Read More at tuskeshomes.com

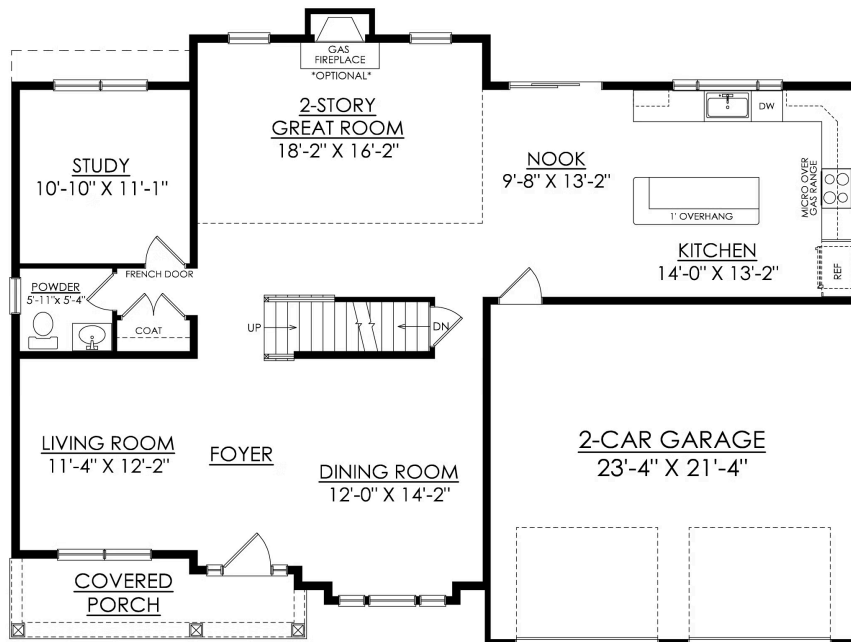
Breckenridge Floor Plan

In Hillcrest Estates at Mountain Top from \$548,900



Breckenridge Floor Plan

In Hillcrest Estates at Mountain Top from \$548,900

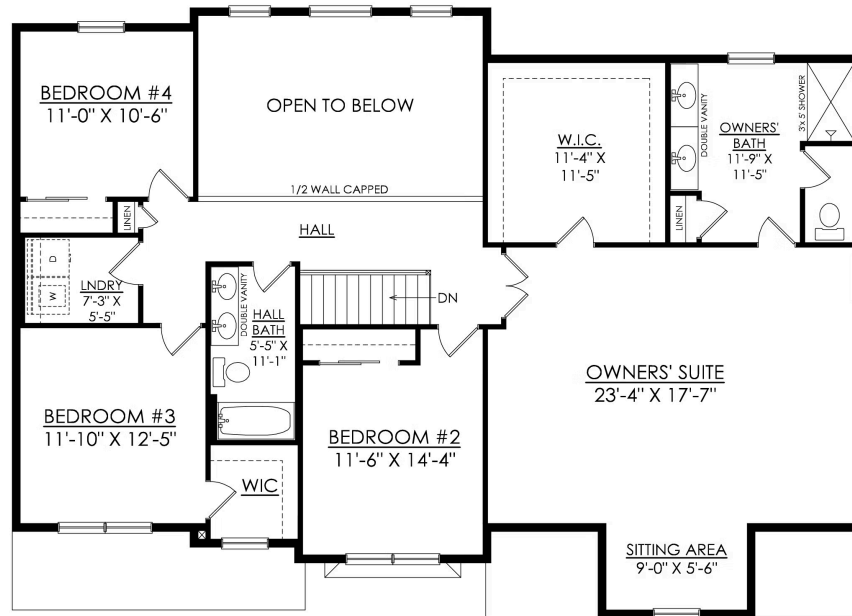


BRECKENRIDGE TRADITIONAL
STARTING AT 2954 SF

1ST FLOOR PLAN

Breckenridge Floor Plan

In Hillcrest Estates at Mountain Top from \$548,900



BRECKENRIDGE TRADITIONAL
STARTING AT 2954 SF

2ND FLOOR PLAN



Breckenridge Floor Plan

In Hillcrest Estates at Mountain Top from **\$548,900**



Breckenridge Floor Plan

In Hillcrest Estates at Mountain Top from **\$548,900**



Breckenridge Floor Plan

In Hillcrest Estates at Mountain Top from **\$548,900**



Breckenridge Floor Plan

In Hillcrest Estates at Mountain Top from **\$548,900**



Breckenridge Floor Plan

In Hillcrest Estates at Mountain Top from **\$548,900**



Breckenridge Floor Plan

In Hillcrest Estates at Mountain Top from **\$548,900**