

Lily Floor Plan

In Hillcrest Estates at Mountain Top from **\$389,900**

PLAN DETAILS

Pricing from **\$389,900**

3 Beds 2.5 Baths 1,780 Sq Ft

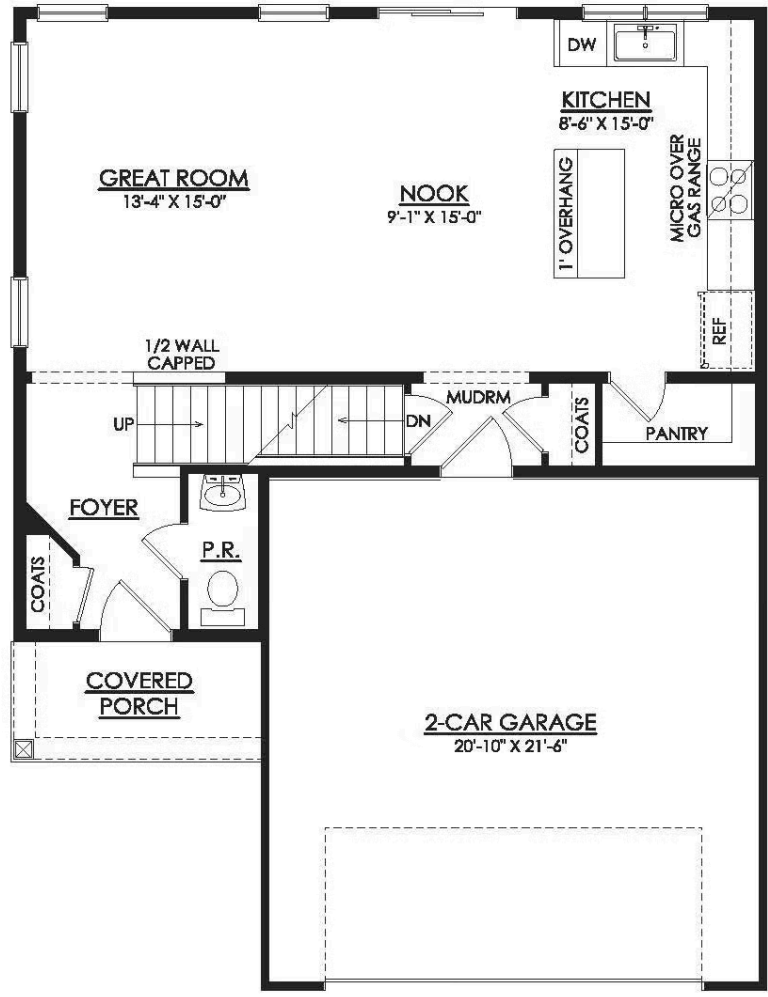
2 Story 2 Car Garage



Welcome to the Lily, where comfort and convenience come together in a beautifully designed floor plan. Upon entering the Foyer, you'll find a spacious Great Room that flows seamlessly into a cozy Dining Nook and modern Kitchen. This open-concept layout, featuring a sliding door that leads to the outdoors, provides ample space for entertaining family and friends while maintaining an intimate atmosphere. Adjacent to the kitchen are a generous pantry and a mudroom that offers easy access to the 2-Car Garage. Upstairs, the Owners' Suite boasts a spacious walk-in closet and a luxurious bathroom, complete with a double vanity and a second walk-in closet. This floor also includes two additional bedrooms, a shared full bath, and a convenient laundry room. The Lily invites anyone who is looking ... Read More at tuskeshomes.com

Lily Floor Plan

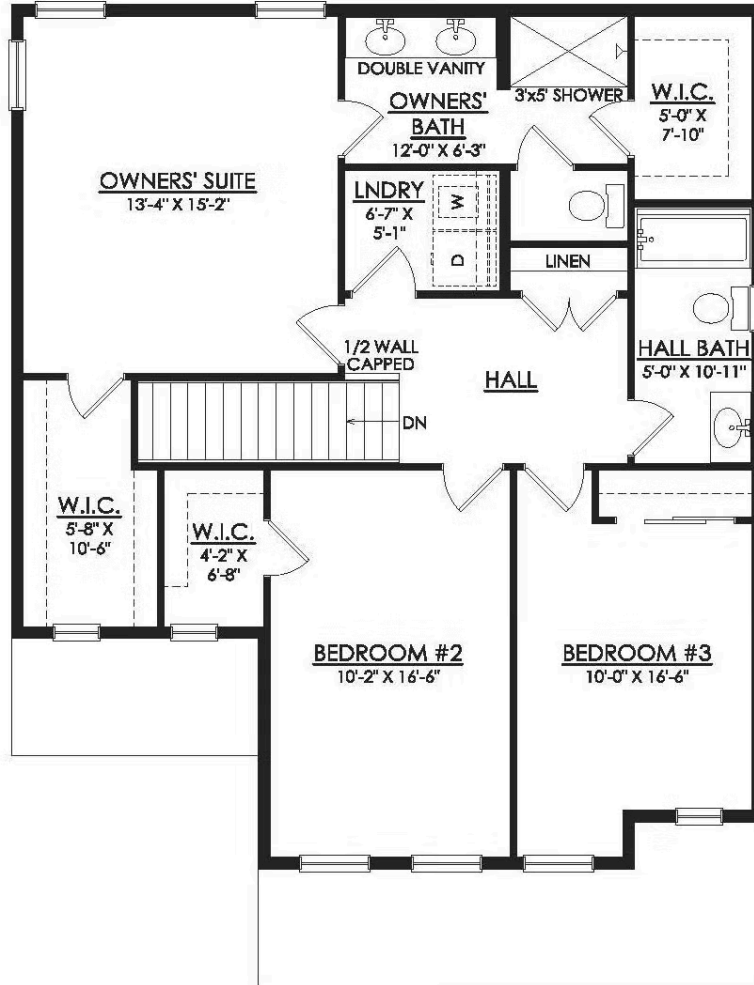
In Hillcrest Estates at Mountain Top from \$389,900



LILY 1ST FLOOR PLAN LIFESTYLE

Lily Floor Plan

In Hillcrest Estates at Mountain Top from \$389,900



LILY 2ND FLOOR PLAN LIFESTYLE