

# Madison Floor Plan

In Hillcrest Estates at Mountain Top from **\$451,900**

## PLAN DETAILS

Pricing from **\$451,900**

4 Beds 2.5 Baths 2,392 Sq Ft

2 Story 2 Car Garage



Traditional Elevation

Welcome to the Madison, a charming and inviting home that's become one of our most popular floorplans. You'll feel right at home as soon as you step into its modern open-concept main living area. The seamless flow between the Dining Room, Kitchen with Nook, and Great Room creates a warm and welcoming atmosphere. The bright and sunny study with French doors and wall of windows is a perfect place to work or learn from home. The welcoming Foyer, convenient Powder Room, and practical Mudroom near the 2-car garage are just some of the lovely touches that make the Madison special. Upstairs, the Owners' Suite features a spacious Walk-In Closet and private ensuite Bath. And with three additional Bedrooms, a full Bath, and a second-floor Laundry Room, there's plenty of space for everyone! Some image ... Read More at [tuskeshomes.com](http://tuskeshomes.com)

## PLAN FEATURES

- 4 Bedrooms
- 2.5 Bathrooms
- 2-Car Garage
- Starting at 2392 Square Feet
- Granite or Quartz Kitchen Countertops
- Stainless Steel Range/Oven, Microwave, and Dishwasher
- Two 2nd Floor Layout Options

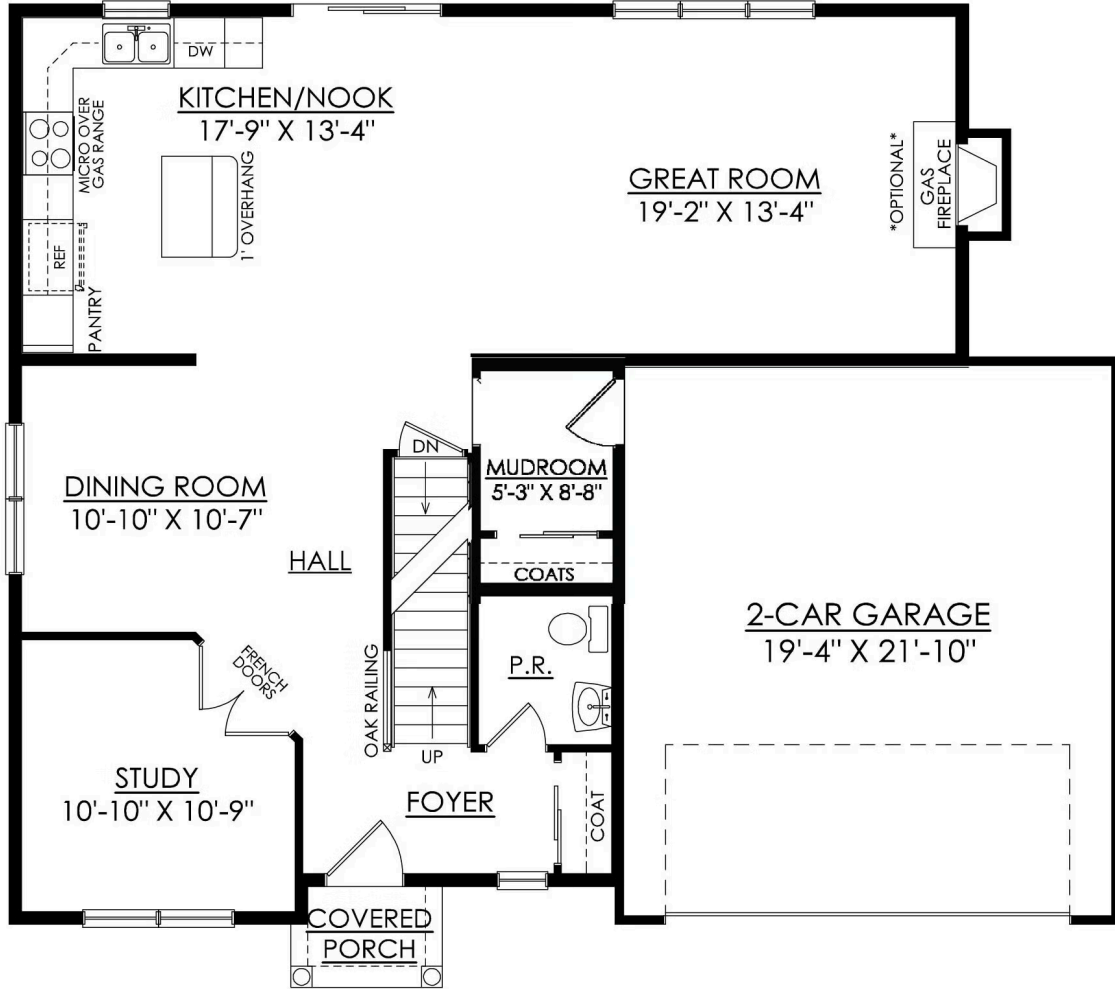
# Madison Floor Plan

In Hillcrest Estates at Mountain Top from \$451,900



# Madison Floor Plan

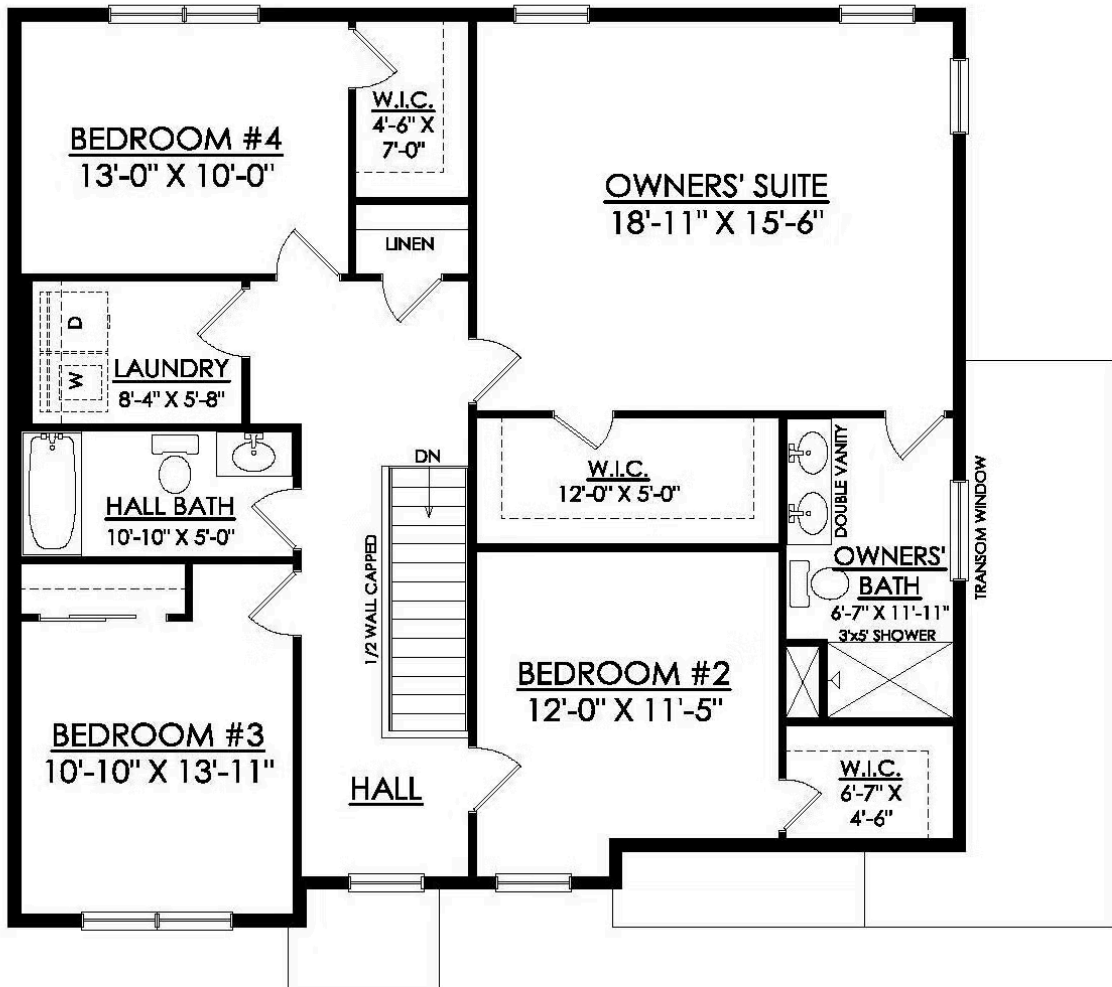
In Hillcrest Estates at Mountain Top from \$451,900



## MADISON COUNTRY 1ST FLOOR PLAN LIFESTYLE

# Madison Floor Plan

In Hillcrest Estates at Mountain Top from \$451,900



## MADISON COUNTRY 2ND FLOOR PLAN LIFESTYLE



# Madison Floor Plan

In Hillcrest Estates at Mountain Top from **\$451,900**



# Madison Floor Plan

In Hillcrest Estates at Mountain Top from **\$451,900**



# Madison Floor Plan

In Hillcrest Estates at Mountain Top from **\$451,900**