

Mia Floor Plan

In Hillcrest Estates at Mountain Top from **\$410,900**

PLAN DETAILS

Pricing from **\$410,900**

3 Beds 2.5 Baths 1,928 Sq Ft

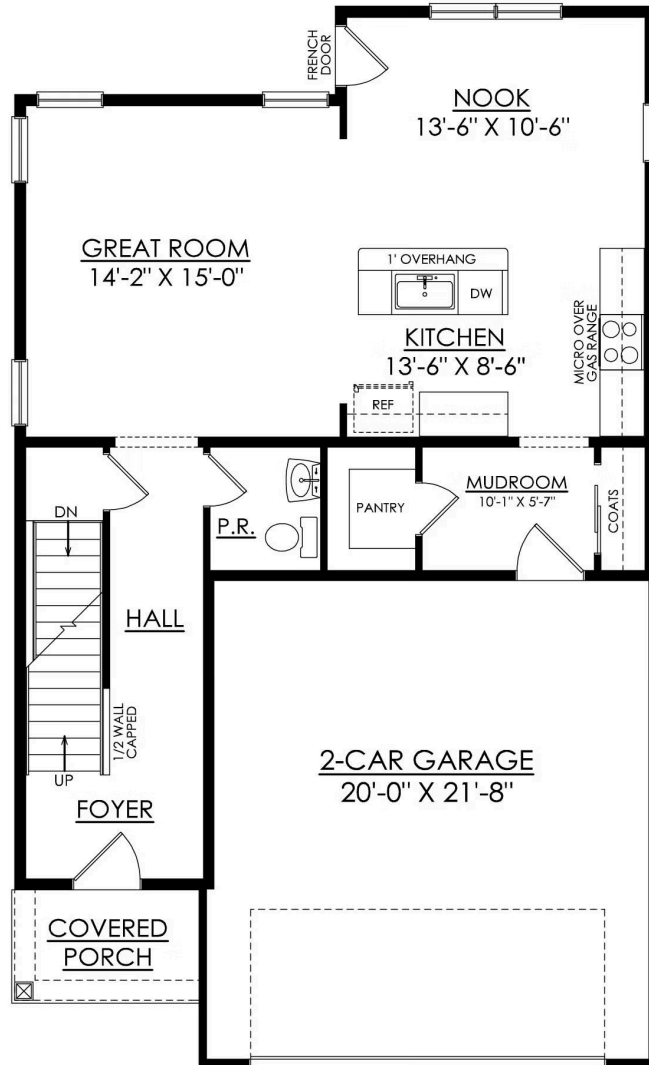
2 Story 2 Car Garage



Welcome to the Mia, a beautifully designed and thoughtfully crafted home that's perfect for families looking for comfort and convenience. Entering through the foyer, you're greeted by a warm and inviting open-concept Great Room, Kitchen, and Dining Nook. The spacious Kitchen comes equipped with modern appliances, ample countertop space, and a perfect view of the main hub of the home, making entertaining a breeze. A well-located Powder Room and Mudroom with a Walk-in Pantry just off the 2-Car Garage complete the Mia's first floor. Upstairs, you'll find a large Owners' Suite with two walk-in closets and a private Bath, making it the perfect retreat after a long day. Additionally, there are two more Bedrooms with walk-in closets that share a Hall Bath, providing plenty of space for a growing f ... Read More at tuskeshomes.com

Mia Floor Plan

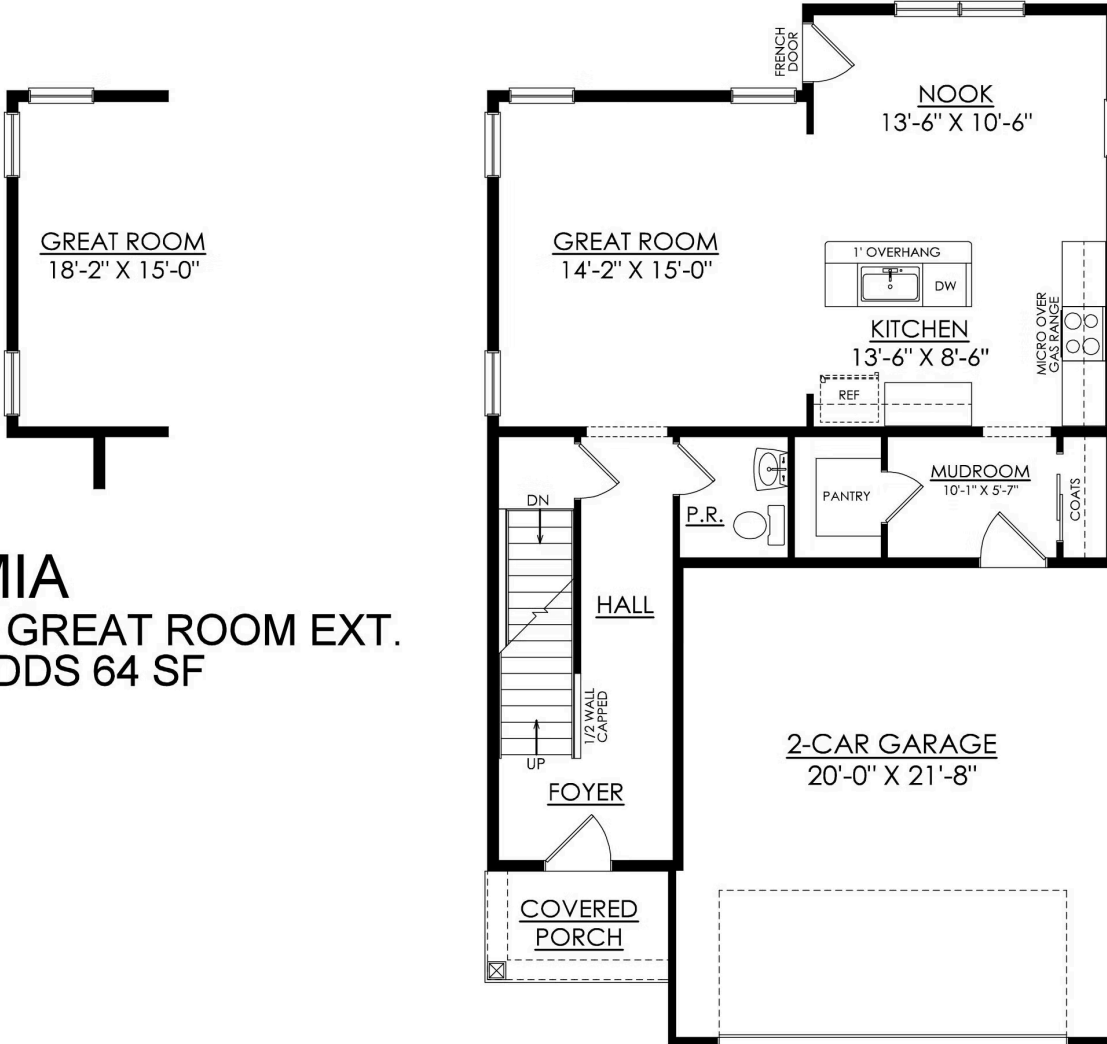
In Hillcrest Estates at Mountain Top from \$410,900



MIA 1ST FLOOR PLAN STARTING AT 1928 SF

Mia Floor Plan

In Hillcrest Estates at Mountain Top from \$410,900

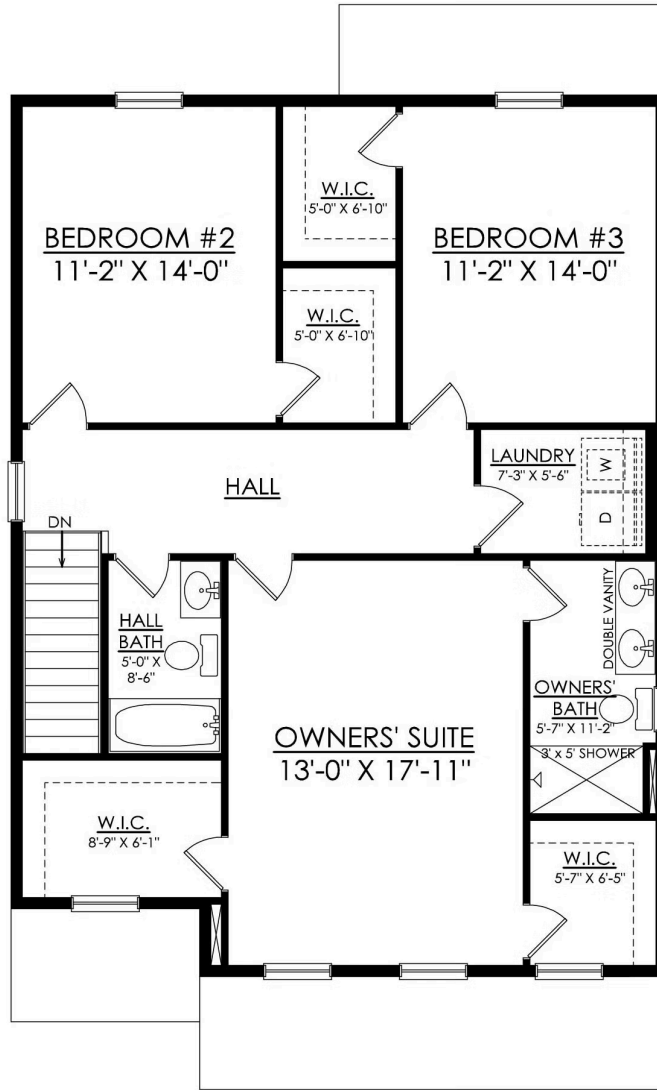


MIA
4' GREAT ROOM EXT.
ADDS 64 SF

MIA 1ST FLOOR PLAN
STARTING AT 1928 SF

Mia Floor Plan

In Hillcrest Estates at Mountain Top from \$410,900



MIA 2ND FLOOR PLAN STARTING AT 1928 SF