






Pinehurst Floor Plan

In Hillcrest Estates at Mountain Top from \$403,900

PLAN DETAILS

Pricing from \$403,900

-  3 Beds
-  2.0 Baths
-  1,530 Sq Ft
-  1 Story
-  2 Car Garage



Traditional Elevation

Discover the ultimate home sweet home with the Pinehurst! This cozy ranch-style floor plan is perfect for those seeking a stress-free lifestyle. The open-concept design is both efficient and inviting, making it the perfect space for hosting guests and enjoying quality time with loved ones. The Kitchen, with its island and overhang, is not only functional, but it's also the perfect place for a quick chat over coffee. The Great Room features a wall of windows, allowing natural light to pour in, and offering stunning views of the backyard. Retire to the luxurious Owner's Suite, complete with a generous walk-in closet and a private spa-like Owner's Bath, featuring a double vanity, roomy shower, and separate linen closet. With two more Bedrooms and a full Hall Bath, the Pinehurst has everything ... Read More at tuskeshomes.com

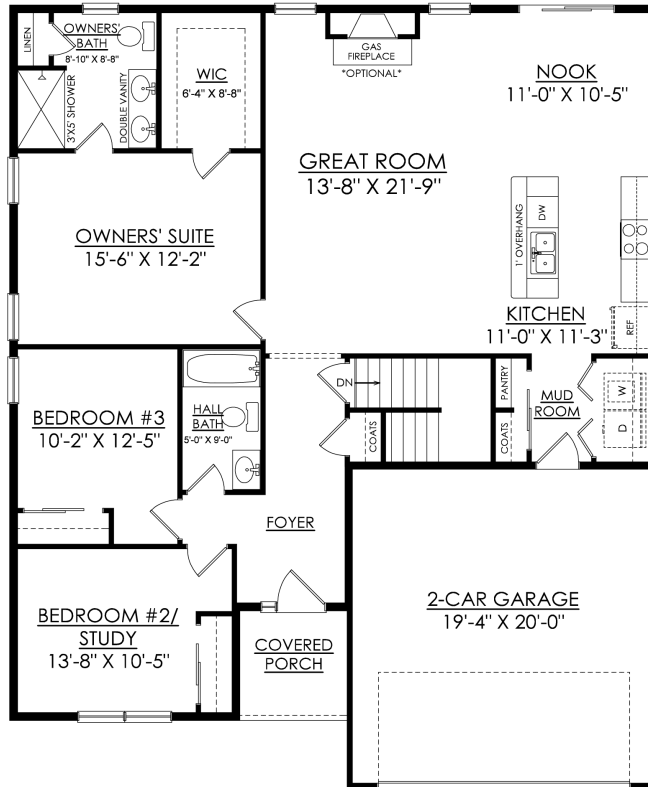
Pinehurst Floor Plan

In Hillcrest Estates at Mountain Top from \$403,900



Pinehurst Floor Plan

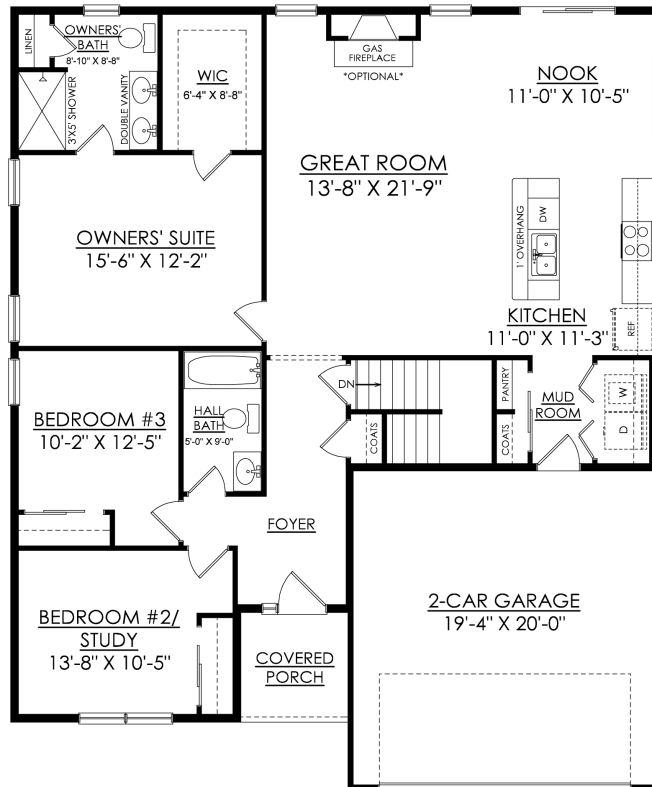
In Hillcrest Estates at Mountain Top from \$403,900



PINEHURST TRADITIONAL
STARTING AT 1530 SF

Pinehurst Floor Plan

In Hillcrest Estates at Mountain Top from \$403,900



PINEHURST COUNTRY
STARTING AT 1530 SF