

3231 Michaels School Rd #12

Nazareth, PA 18064

HOME DETAILS

4 Beds
 4.0 Baths
 3,763 Sq Ft
 2 Story
 3 Car Garage



Farmhouse Elevation

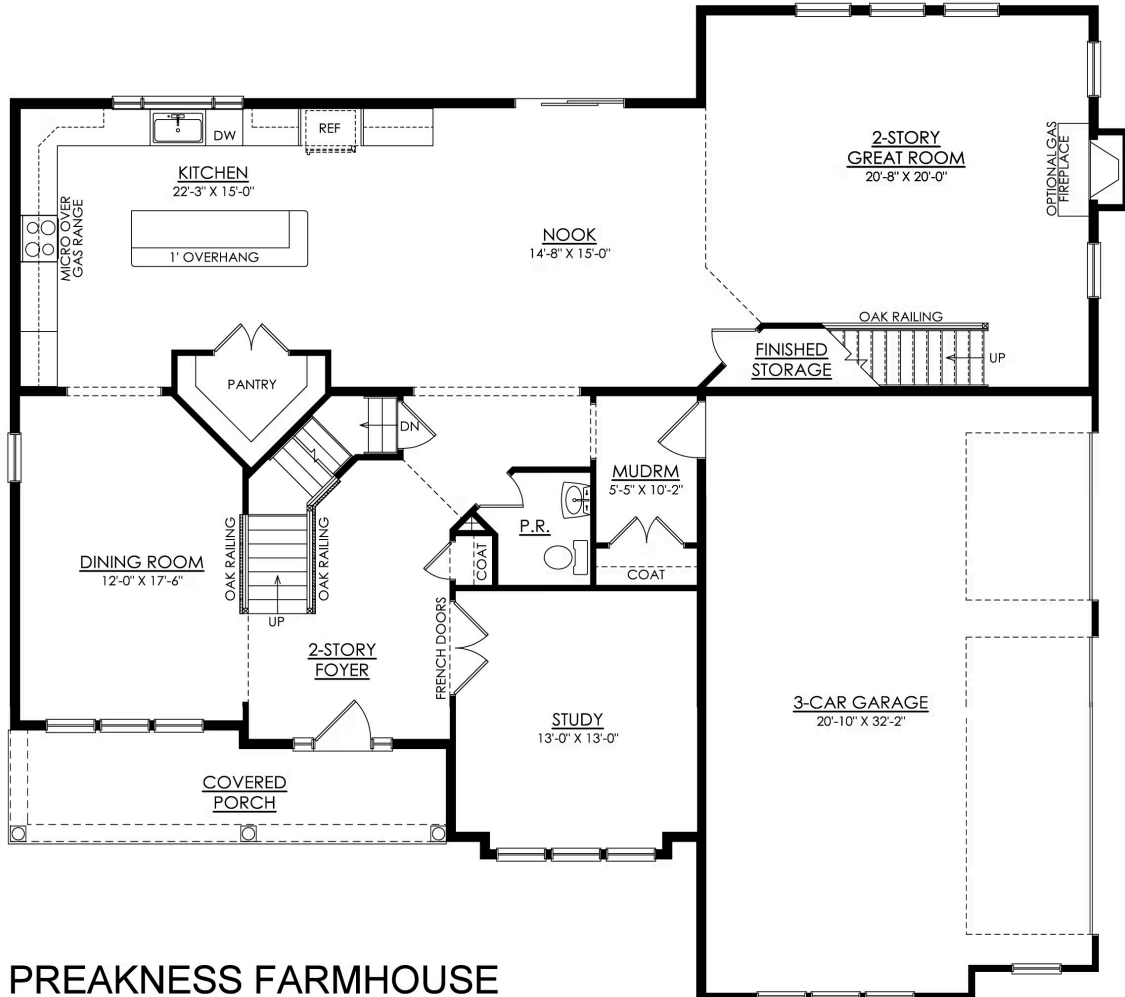
Additional Details About This Quick Delivery Home Coming Soon Still Time to Personalize Your Interior Colors! The Preakness floor plan offers a magnificent layout with over 3,700 sq ft of luxurious space. Step into the awe-inspiring two-story Foyer and Great Room, each with its own staircase. The Kitchen features a stunning island complete with an overhang bar that's perfect for entertaining... Read More at tuskeshomes.com

HOME FEATURES

- 4 Bedrooms
- 4 Bathrooms
- 3-Car Garage
- Daylight Basement
- Gourmet Kitchen with Large Walk-In Pantry and Oversized Island
- Full Bath on 1st Floor
- Finished Storage Space on 1st Floor
- Window-Lined 2-Story Great Room with Fireplace
- Spacious Owners' Suite with 2 Walk-In Closets and Private Bath
- 2nd Floor Laundry Room
- Additional 2nd Floor Bedrooms with Walk-In Closets, and Full Private and Jack-and-Jill Baths
- 1 Acre Homesite

3231 MICHAELS SCHOOL RD #12

Nazareth, PA 18064



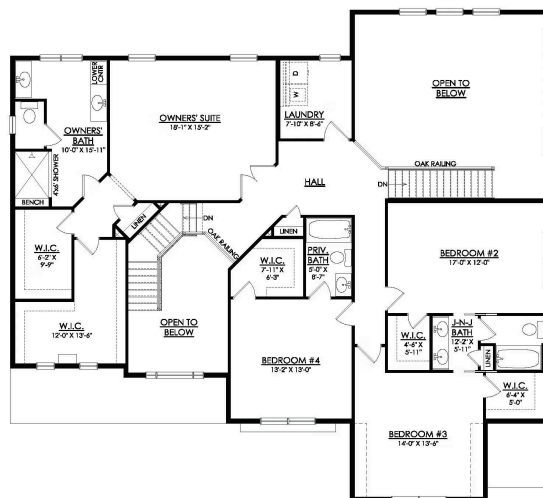
PREAKNESS FARMHOUSE

GOURMET KITCHEN OPTION

1ST FLOOR PLAN

3231 MICHAELS SCHOOL RD #12

Nazareth, PA 18064



PREAKNESS FARMHOUSE
OVERLOOK ESTATES
STARTING AT 3763 SF

2ND FLOOR PLAN