

Churchill Floor Plan

In Overlook Estates from **\$874,900**

PLAN DETAILS

Pricing from **\$874,900**

4 Beds 2.5 Baths 3,060 Sq Ft

2 Story 2 Car Garage



Farmhouse Elevation

Discover the perfect family home in The Churchill! This beauty offers over 3000 sq ft of living space of elegance and comfort. The 2-story Great Room sets the tone of this open-concept floorplan, while the living room provides a warm and inviting space for gatherings. The gourmet Kitchen, complete with Dining Nook leading to the backyard, is a chef's dream with ample countertop space and a large island with room for seating. A formal dining room and study complete the main level. The second floor boasts a luxurious Owners' Suite with private Bath. Three additional Bedrooms, a shared hall Bath, and a conveniently located 2nd floor Laundry Room can also be found upstairs. Some images, videos, virtual tours shown may be from a previously built Tuskes home of similar design. Actual options ... Read More at tuskeshomes.com

PLAN FEATURES

- 4 Bedrooms
- 2.5 Bathrooms
- 2-Car Garage
- Starting at 3,060 Square Feet
- 2-Story Great Room
- Chef's Kitchen with Stainless Steel Chimney Hood, Wall Oven, 5-Burner Cooktop, and 42" Wellborn Cabinetry
- Kitchen Island with Granite or Quartz Countertops
- Stainless Steel Range/Oven, Microwave, and Dishwasher
- Private Owners' Suite with Walk-In Closet
- Fully Tiled 4'x6' Shower with Bench in Owners' Bath
- 2nd Floor Laundry Room
- Beautifully Resilient Hardie® Fiber Cement Siding

Churchill Floor Plan

In Overlook Estates from \$874,900



Churchill Floor Plan

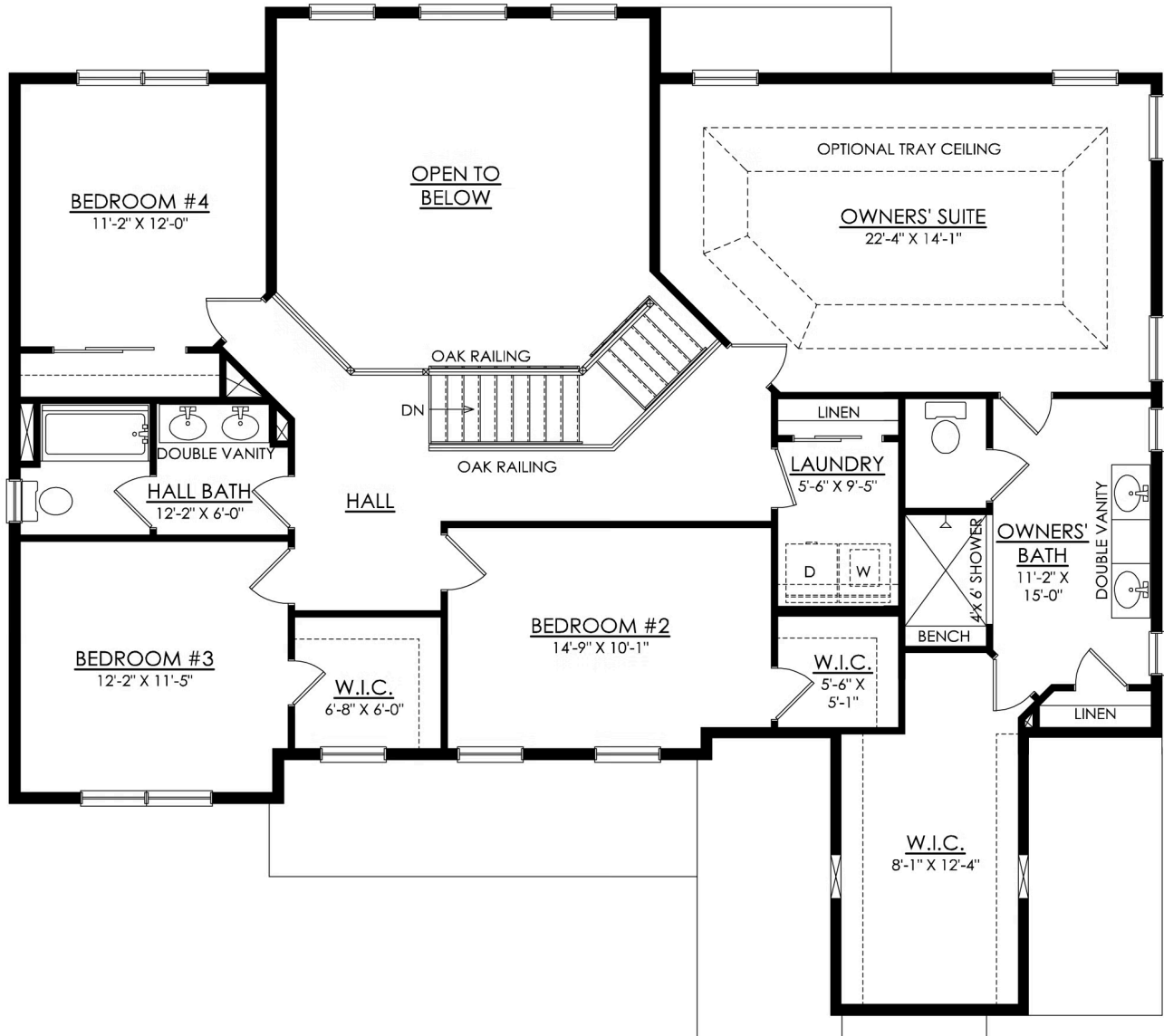
In Overlook Estates from \$874,900



CHURCHILL FARMHOUSE 1ST FLOOR PLAN ESTATE

Churchill Floor Plan

In Overlook Estates from \$874,900



CHURCHILL FARMHOUSE 2ND FLOOR PLAN ESTATE



Churchill Floor Plan

In Overlook Estates from **\$874,900**



Churchill Floor Plan

In Overlook Estates from **\$874,900**