

# Juniper Floor Plan

In Overlook Estates from **\$924,900**

## PLAN DETAILS

Pricing from **\$924,900**

4 Beds 3.5 Baths 3,307 Sq Ft

2 Story 2 Car Garage



Juniper Traditional- Side Entry Garage

Elevate your lifestyle with the Juniper, offering the perfect balance of privacy and comfort for you and your family. An impressive two-story Foyer sets the tone for this home's spacious open-concept main living area. The Kitchen is a cook's dream, with an expanded island, a walk-in pantry, and a butler's pantry for serving drinks or snacks. The airy 2-story Great Room boasts a gas fireplace and plenty of windows for natural light. A private Study and Powder Room complete the 1st floor layout. Head up the open staircase to find an enormous Owners' Suite with a sitting area, a walk-in closet, and a private Bath. Additionally, a Guest Suite with its own Bath, two additional Bedrooms that share a Jack-n-Jill bath, and a convenient laundry room can also be found on the 2nd floor. Som ... Read More at [tuskeshomes.com](https://tuskeshomes.com)

## PLAN FEATURES

4 Bedrooms  
3.5 Bathrooms  
2-Car Garage  
Starting at 3307 Square Feet  
Kitchen with Granite or Quartz Countertops  
Stainless Steel Range/Oven, Microwave, and Dishwasher  
Butler's Pantry

# Juniper Floor Plan

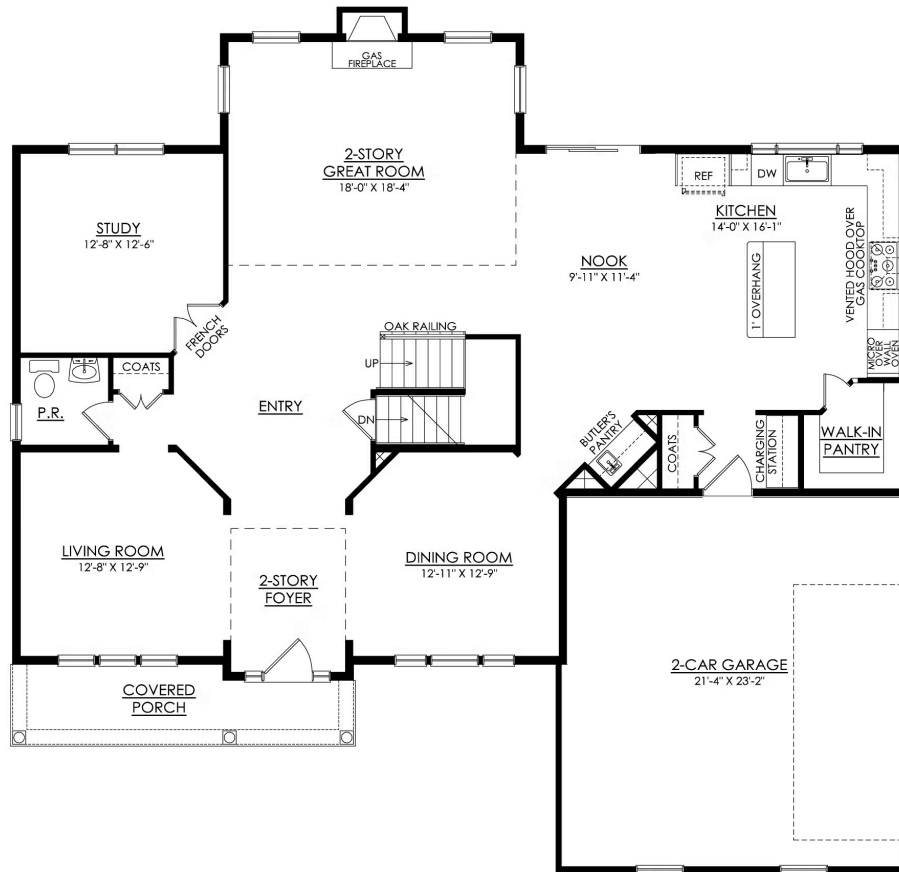
In Overlook Estates from \$924,900





# Juniper Floor Plan

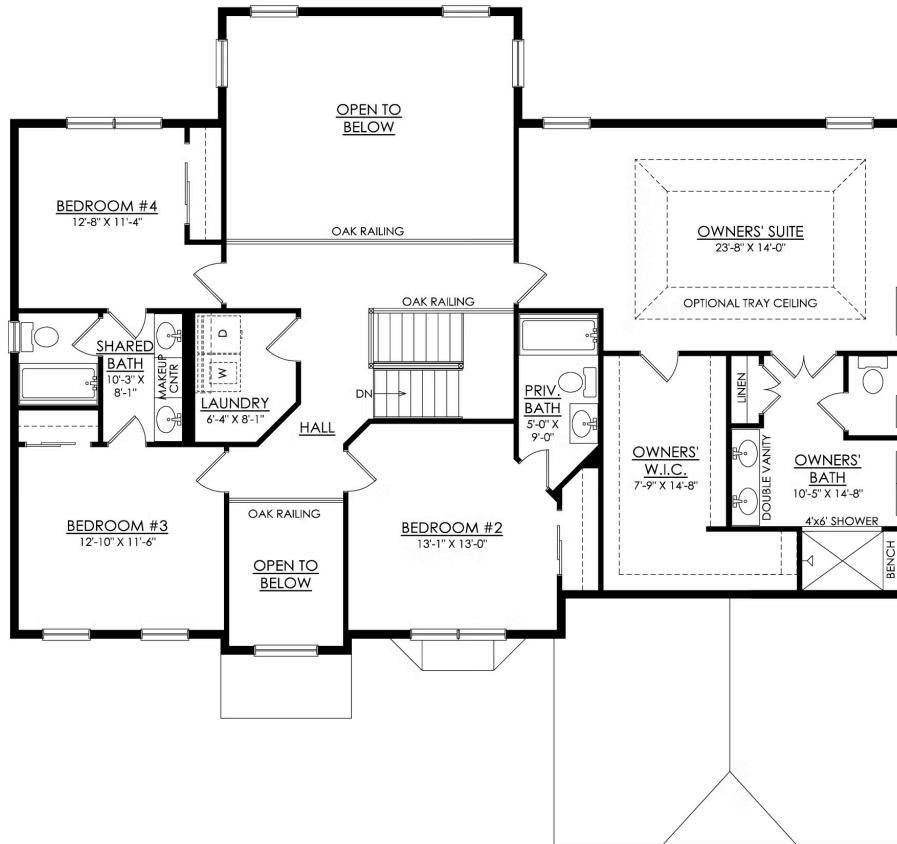
In Overlook Estates from \$924,900



## JUNIPER FARMHOUSE 1ST FLOOR PLAN ESTATE

# Juniper Floor Plan

In Overlook Estates from \$924,900



## JUNIPER TRADITIONAL 2ND FLOOR PLAN ESTATE





# Juniper Floor Plan

In Overlook Estates from **\$924,900**



# Juniper Floor Plan

In Overlook Estates from **\$924,900**