

Juniper Floor Plan

In Overlook Estates from **\$934,900**

PLAN DETAILS

Pricing from **\$934,900**

4 Beds 3.5 Baths 3,307 Sq Ft

2 Story 2 Car Garage



Traditional Elevation

Elevate your lifestyle with the Juniper, offering the perfect balance of privacy and comfort for you and your family. An impressive two-story Foyer sets the tone for this home's spacious open-concept main living area. The Kitchen is a cook's dream, with an expanded island, a walk-in pantry, and a butler's pantry for serving drinks or snacks. The airy 2-story Great Room boasts a gas fireplace and plenty of windows for natural light. A private Study and Powder Room complete the 1st floor layout. Head up the open staircase to find an enormous Owners' Suite with a sitting area, a walk-in closet, and a private Bath. Additionally, a Guest Suite with its own Bath, two additional Bedrooms that share a Jack-n-Jill bath, and a convenient laundry room can also be found on the 2nd floor. Som ... Read More at tuskeshomes.com

PLAN FEATURES

- 4 Bedrooms
- 3.5 Bathrooms
- 2-Car Garage
- Starting at 3,307 Square Feet
- Chef's Kitchen with Stainless Steel Chimney Hood, Wall Oven, 5-Burner Gas Cooktop, and 42" Wellborn Cabinetry
- Stainless Steel Range/Oven, Microwave, and Dishwasher
- Butler's Pantry and Walk-In Pantry
- Two-Story Great Room
- Two-Story Foyer
- Study
- 2nd Floor Laundry
- Private Owners' Suite featuring Fully Tiled 4'x6' Shower with Quartz Bench in Private Bath
- Beautifully Resilient Hardie® Fiber Cement Siding

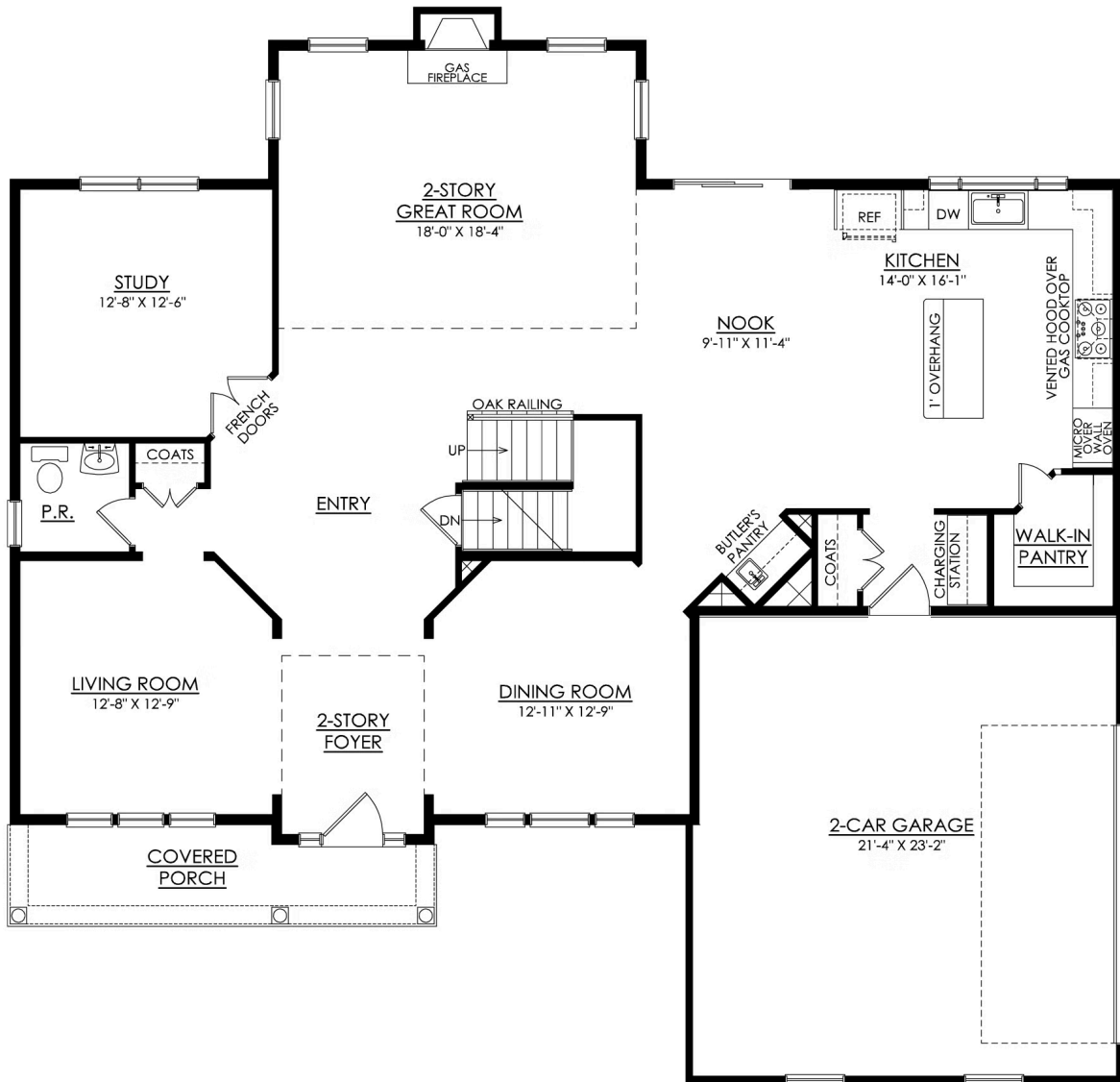
Juniper Floor Plan

In Overlook Estates from **\$934,900**



Juniper Floor Plan

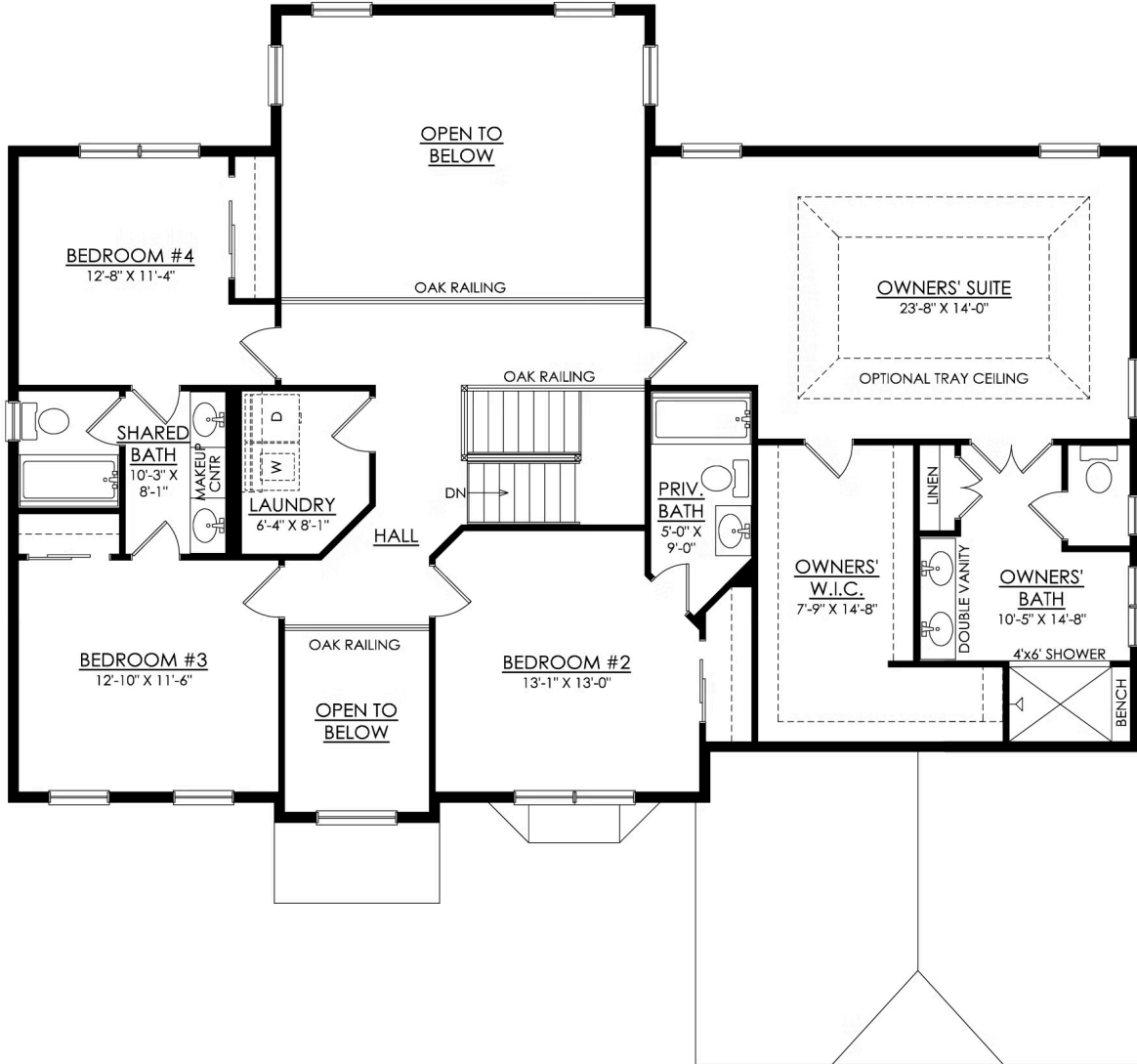
In Overlook Estates from \$934,900



JUNIPER FARMHOUSE 1ST FLOOR PLAN ESTATE

Juniper Floor Plan

In Overlook Estates from \$934,900



JUNIPER TRADITIONAL 2ND FLOOR PLAN ESTATE



Juniper Floor Plan

In Overlook Estates from **\$934,900**



Juniper Floor Plan

In Overlook Estates from **\$934,900**