

Magnolia Floor Plan

In Overlook Estates from **\$844,900**

PLAN DETAILS

Pricing from **\$844,900**

4 Beds 2.5 Baths 2,820 Sq Ft

2 Story 2 Car Garage



Craftsman Elevation - Side Entry Garage

Step into opulence with The Magnolia, a stunning floorplan starting at 2,820 sq ft. The Kitchen boasts a large island with seating, granite or quartz countertops, and a dining Nook surrounded by windows. The main level also includes a spacious Great Room, formal Dining Room, Private Study with French doors, Powder Room, Mudroom, and welcoming Foyer. Upstairs, the Owners' Suite features a spacious Walk-In Closet with an attached full Bath. Three additional bedrooms, a shared hall bath, and a 2nd floor Laundry Room complete the layout. For even more space, consider the optional Bonus Room above the Garage, perfect for a 5th Bedroom, Home Office, or Play Room. Some images, videos, virtual tours shown may be from a previously built Tuskes home of similar design. Actual options, colors, and ...
Read More at tuskeshomes.com

PLAN FEATURES

- 4 Bedrooms
- 2.5 Bathrooms
- 2-Car Garage with Additional Storage
- Starting at 2,820 Square Feet
- Chef's Kitchen with Stainless Steel Chimney Hood, Wall Oven, 5-Burner Cooktop, and 42" Wellborn
- Granite or Quartz Kitchen Countertops

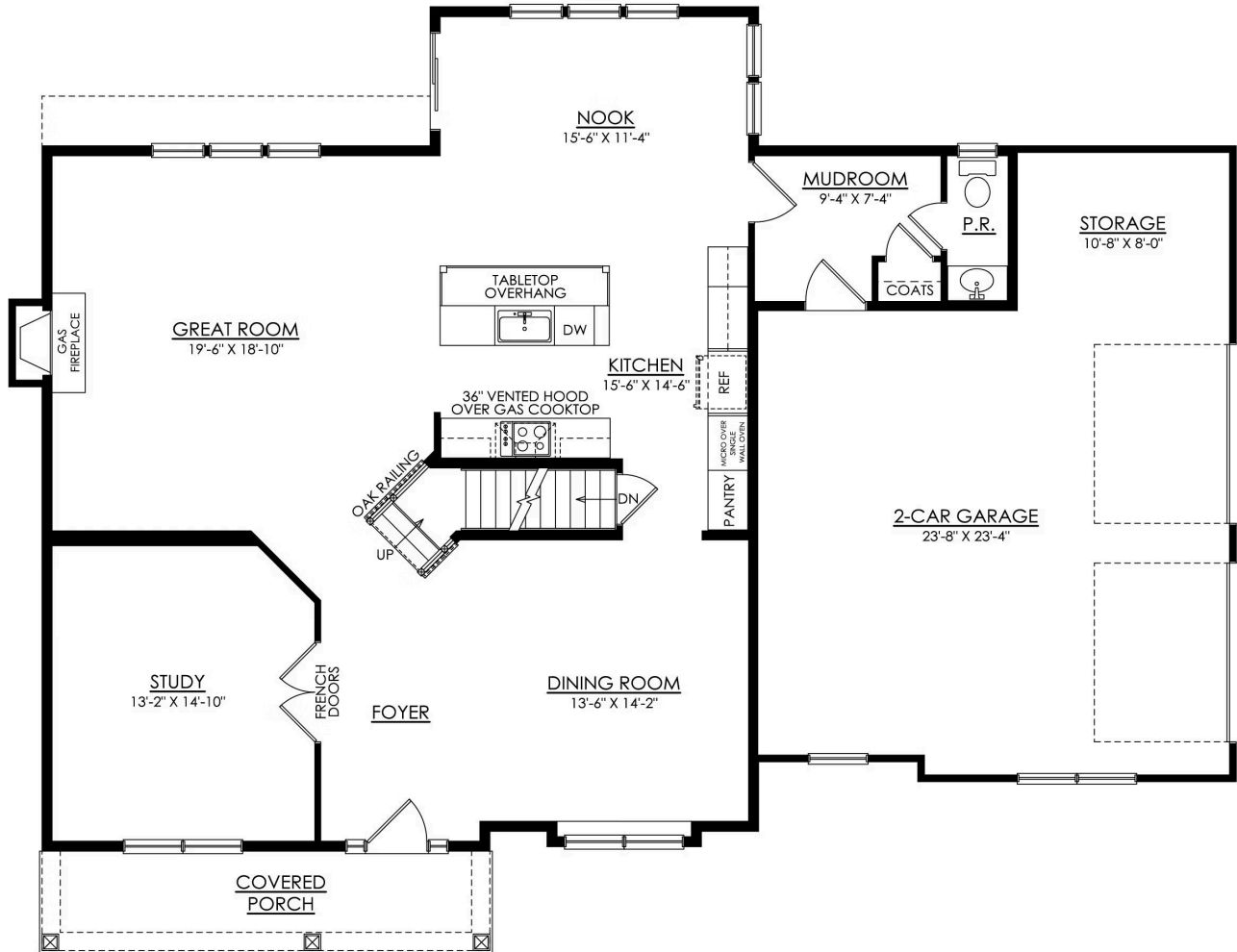
Magnolia Floor Plan

In Overlook Estates from **\$844,900**



Magnolia Floor Plan

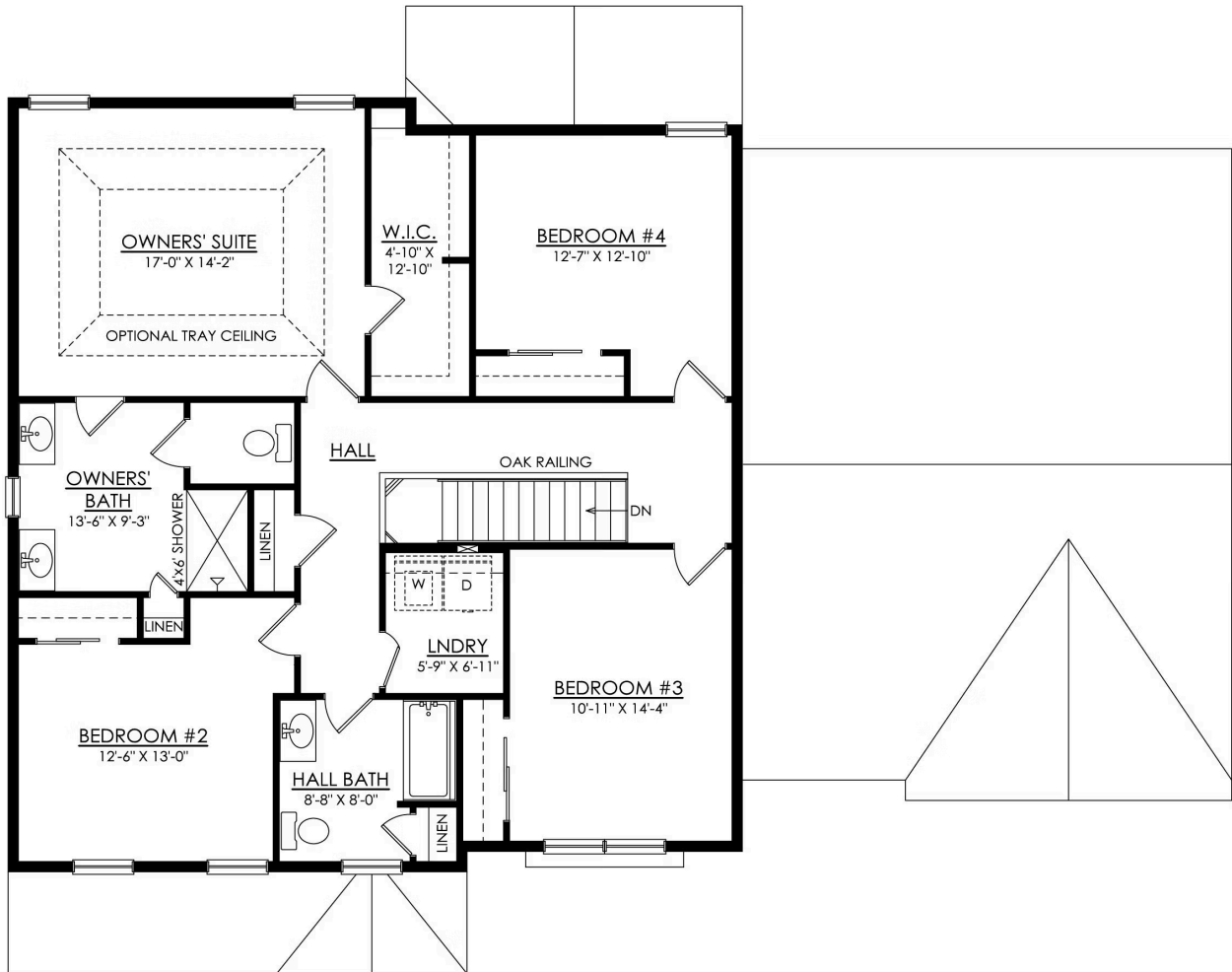
In Overlook Estates from \$844,900



MAGNOLIA FARMHOUSE 1ST FLOOR PLAN ESTATE

Magnolia Floor Plan

In Overlook Estates from \$844,900



MAGNOLIA FARMHOUSE 2ND FLOOR PLAN ESTATE



Magnolia Floor Plan

In Overlook Estates from **\$844,900**



Magnolia Floor Plan

In Overlook Estates from **\$844,900**



Magnolia Floor Plan

In Overlook Estates from **\$844,900**



Magnolia Floor Plan

In Overlook Estates from **\$844,900**