

Maverick Floor Plan

In Overlook Estates from \$1,004,900

PLAN DETAILS

Pricing from \$1,004,900

 5 Beds  4.5 Baths  4,133 Sq Ft

 2 Story  3 Car Garage



Traditional Elevation

The Maverick is an architectural gem that embodies modern farmhouse style with its spacious 4100 sq ft. floor plan. Ideal for multi-generational living, this home features multiple common areas and bedrooms on both floors, providing maximum comfort and convenience. Its sleek, contemporary design seamlessly integrates function and style, making it the perfect place for families to create lasting memories. Step into the charming Foyer and be welcomed into its magnificent living spaces. The Kitchen features ample counter space, a large island with seating, and a walk-in Pantry. The nearby Great Room is anchored by a cozy gas fireplace, windows with backyard views, and opens to a formal Dining Room. The Family Room is a luxurious escape with cathedral ceilings, a sliding door leading to t ... Read More at tuskeshomes.com

Maverick Floor Plan

In Overlook Estates from \$1,004,900



Maverick Floor Plan

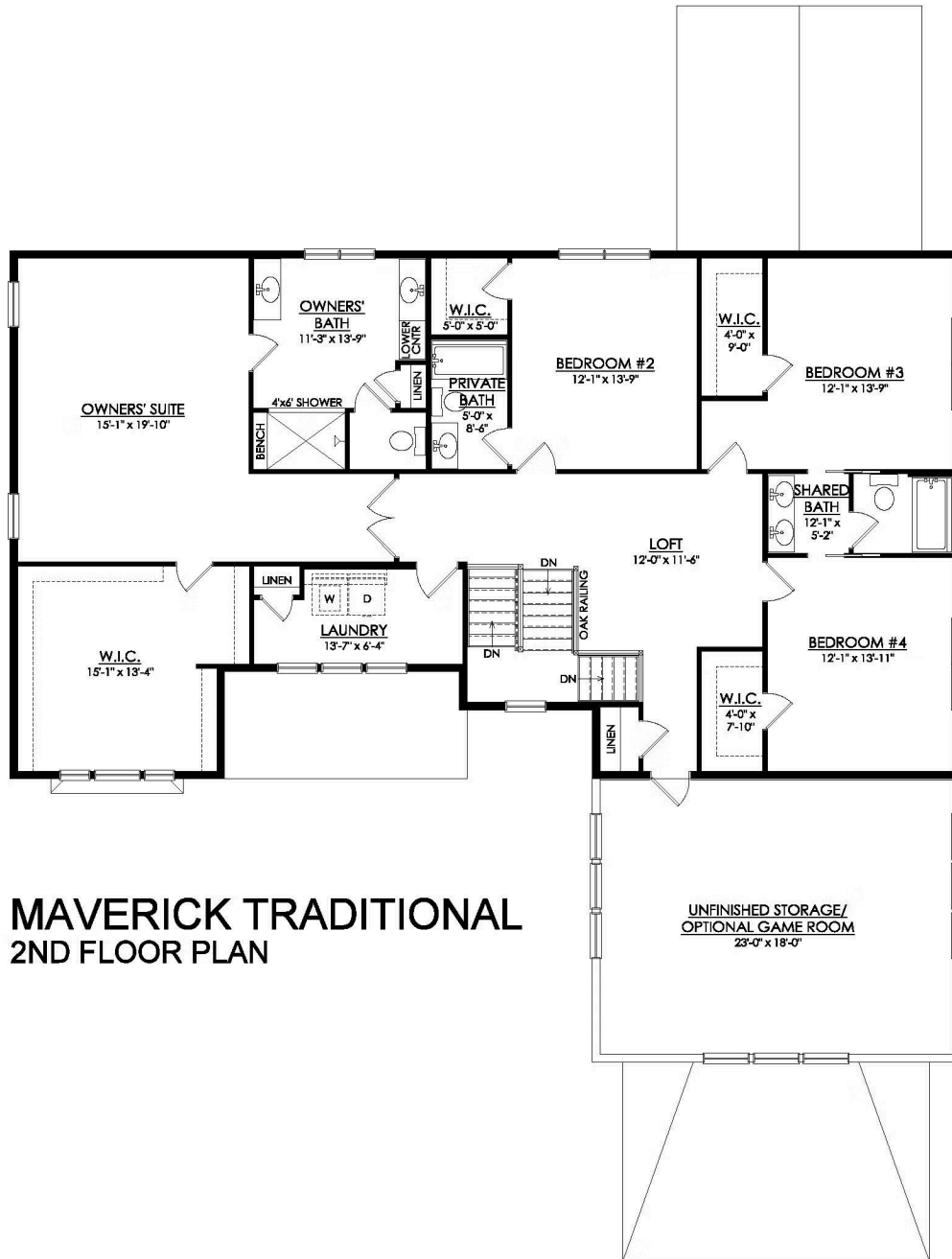
In Overlook Estates from \$1,004,900



**MAVERICK TRADITIONAL
1ST FLOOR PLAN
ESTATE**

Maverick Floor Plan

In Overlook Estates from \$1,004,900



**MAVERICK TRADITIONAL
2ND FLOOR PLAN**



Maverick Floor Plan

In Overlook Estates from **\$1,004,900**



Maverick Floor Plan

In Overlook Estates from **\$1,004,900**



Maverick Floor Plan

In Overlook Estates from **\$1,004,900**