

Rockford Floor Plan

In Overlook Estates from **\$804,900**

PLAN DETAILS

Pricing from **\$804,900**

3 Beds 2.0 Baths 2,320 Sq Ft

1 Story 2 Car Garage



Craftsman Elevation

Introducing the Rockford, an inviting Ranch home designed for both comfort and style and offers a thoughtful layout that maximizes space and functionality. At the heart of the home, the open-concept design of the Great Room and Kitchen creates a welcoming atmosphere. With a grand cathedral ceiling and a wall of windows, there is a sense of openness so that no matter how many people visit, you will never feel cramped. The Owners' Suite tucked away in the back of the home includes two spacious Walk-In Closets, as well as its own ensuite bathroom for added privacy. The Rockford also features two additional Bedrooms that offer flexibility for guests, a home office, or other uses to suit your needs. With thoughtfully designed spaces and a layout that promotes flow and functionality, t ... [Read More at tuskeshomes.com](#)

PLAN FEATURES

- 3 Bedrooms
- 2 Baths
- 2-Car Garage
- Starting at 2,124 Square Feet
- Open Concept Great Room and Kitchen
- Chef's Kitchen with Stainless Steel Chimney Hood, Wall Oven, 5-Burner Gas Cooktop, and 42" Wellborn Cabinetry
- Spacious Kitchen Pantry
- Cathedral Ceiling in Great Room
- Spacious Morning Room
- Private Owners' Suite featuring Fully Tiled 4'x6' Shower with Quartz Bench in Private Bath
- 2 Large Walk-In Closets in Owners' Suite
- Covered Front Porch
- Beautifully Resilient Hardie® Fiber Cement Siding

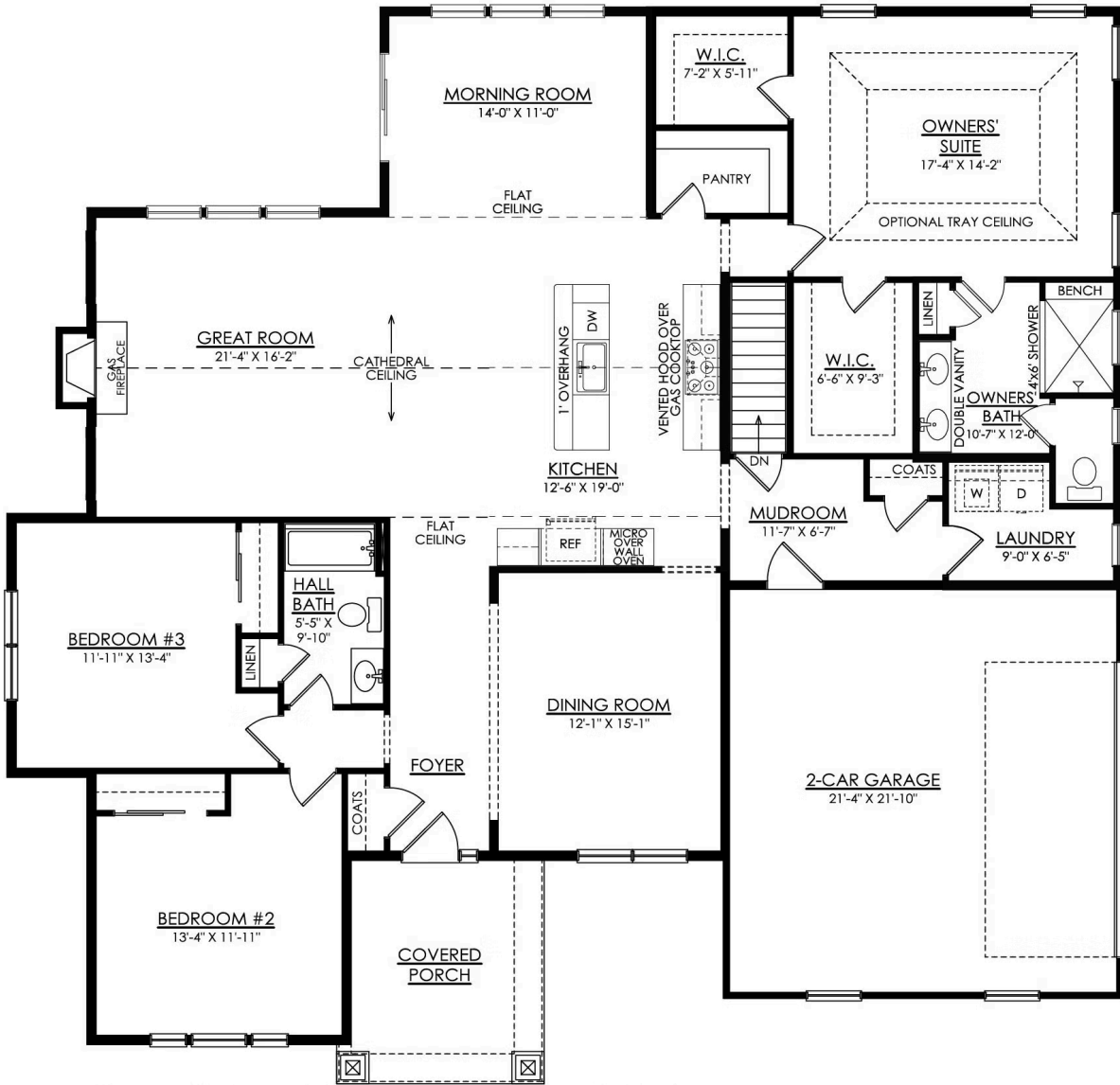
Rockford Floor Plan

In Overlook Estates from **\$804,900**



Rockford Floor Plan

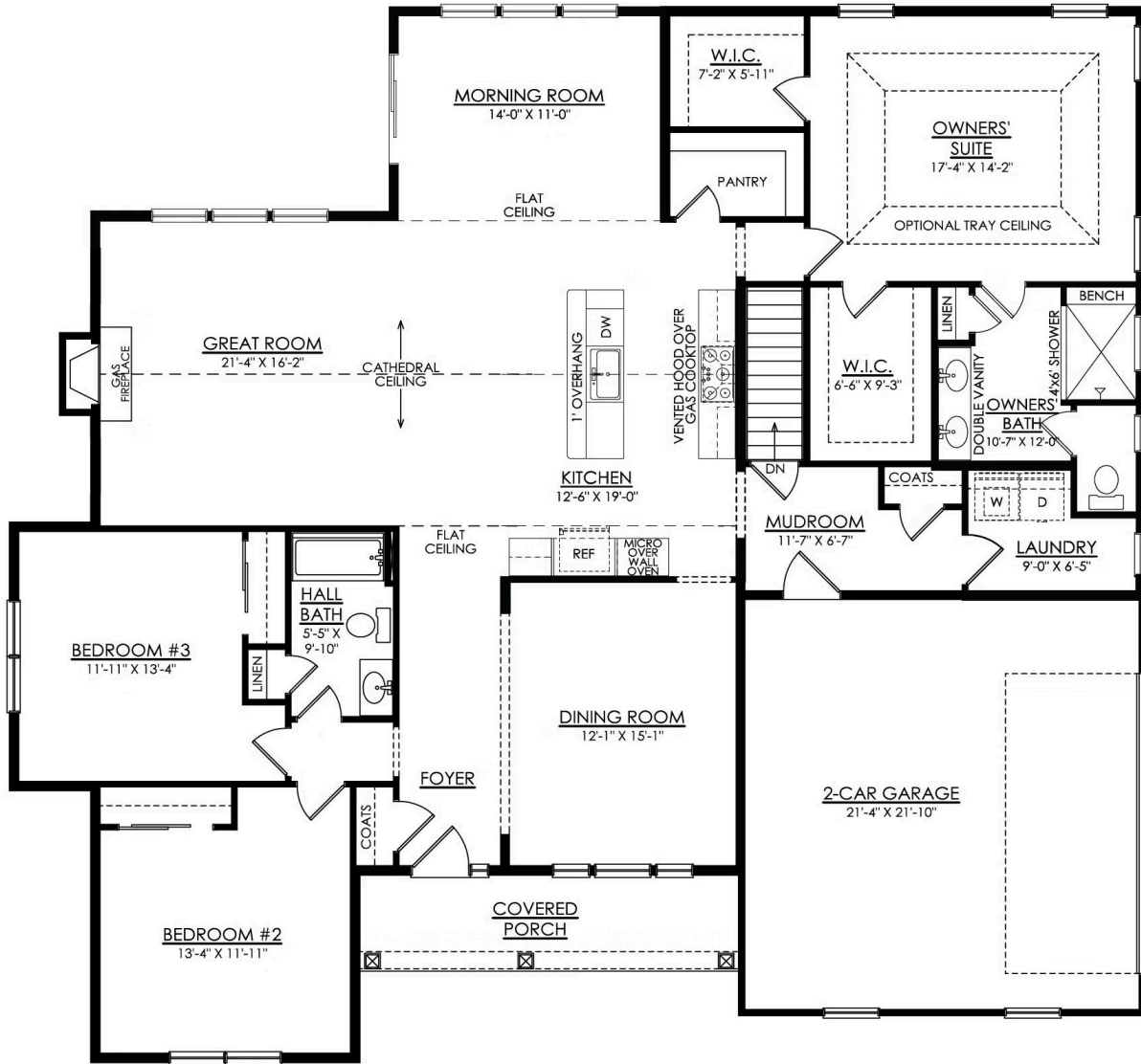
In Overlook Estates from **\$804,900**



ROCKFORD CRAFTSMAN 1ST FLOOR PLAN ESTATE MORNING ROOM

Rockford Floor Plan

In Overlook Estates from \$804,900



ROCKFORD COTTAGE 1ST FLOOR PLAN ESTATE MORNING ROOM