






# 3486 George Street #2

Schnecksville, PA 18078

## HOME DETAILS

 4 Beds
  3.0 Baths
  3,108 Sq Ft  
 2 Story
  2 Car Garage



Traditional Elevation - Side Entry Garage

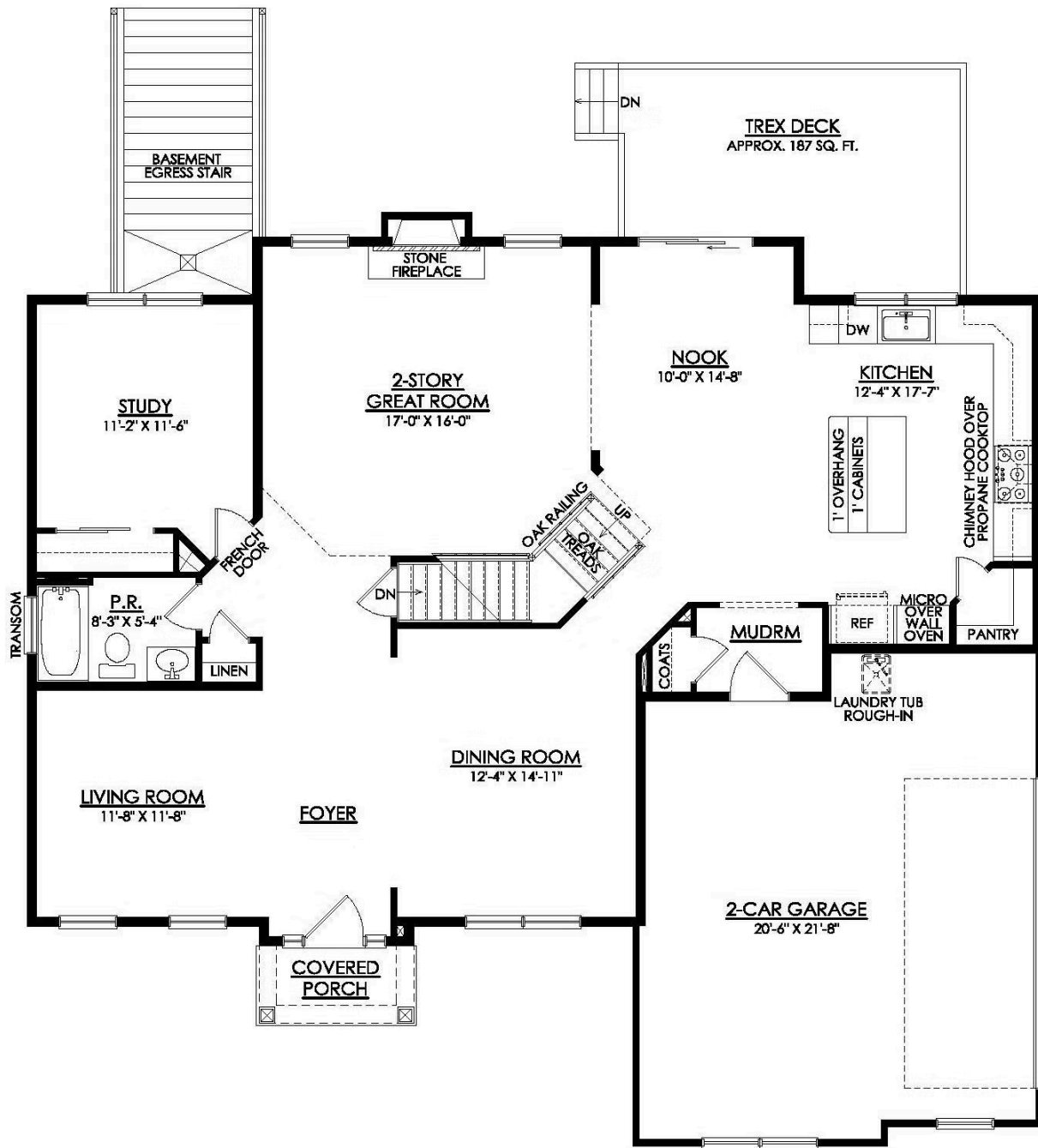
Additional Details About This Quick Delivery Home Coming Soon! Still Time to Personalize Your Interior Colors! Discover the perfect family home in The Churchill! This beauty offers over 3,000 sq ft of living space on 1+ acres in the Parkland School District. The 2-story Great Room sets the tone of this open-concept floor plan, while the living room provides a warm and inviting space for ga... Read More at [tuskeshomes.com](https://tuskeshomes.com)

## HOME FEATURES

- 4 Bedrooms
- 3 Baths
- 2-Car Garage
- 9' Full Basement with Egress Stairs
- Large Kitchen including Pantry and Oversized Island with Cabinets
- 2-Story Great Room with Stone Fireplace
- Full Bathroom with Fiberglass Tub in 1st Floor Powder Room
- Mud Room with Coat Closet
- Spacious Owners' Suite with Tray Ceiling, Walk-In Closet, and Double Vanity
- Ample Closet Space Throughout Home
- Enhanced Kitchen, Great Room, and Owners' Bedroom Lighting Packages with Additional LED Recessed Lighting
- Oak Railing and Oak Stained Treads
- 1+ Acre Homesite
- Parkland School District

# 3486 GEORGE STREET #2

Schnecksville, PA 18078



# 3486 GEORGE STREET #2

Schnecksville, PA 18078

