

3486 George Street #2

Schnecksville, PA 18078

HOME DETAILS

- 4 Beds
- 3.0 Baths
- 3,108 Sq Ft
- 2 Story
- 2 Car Garage



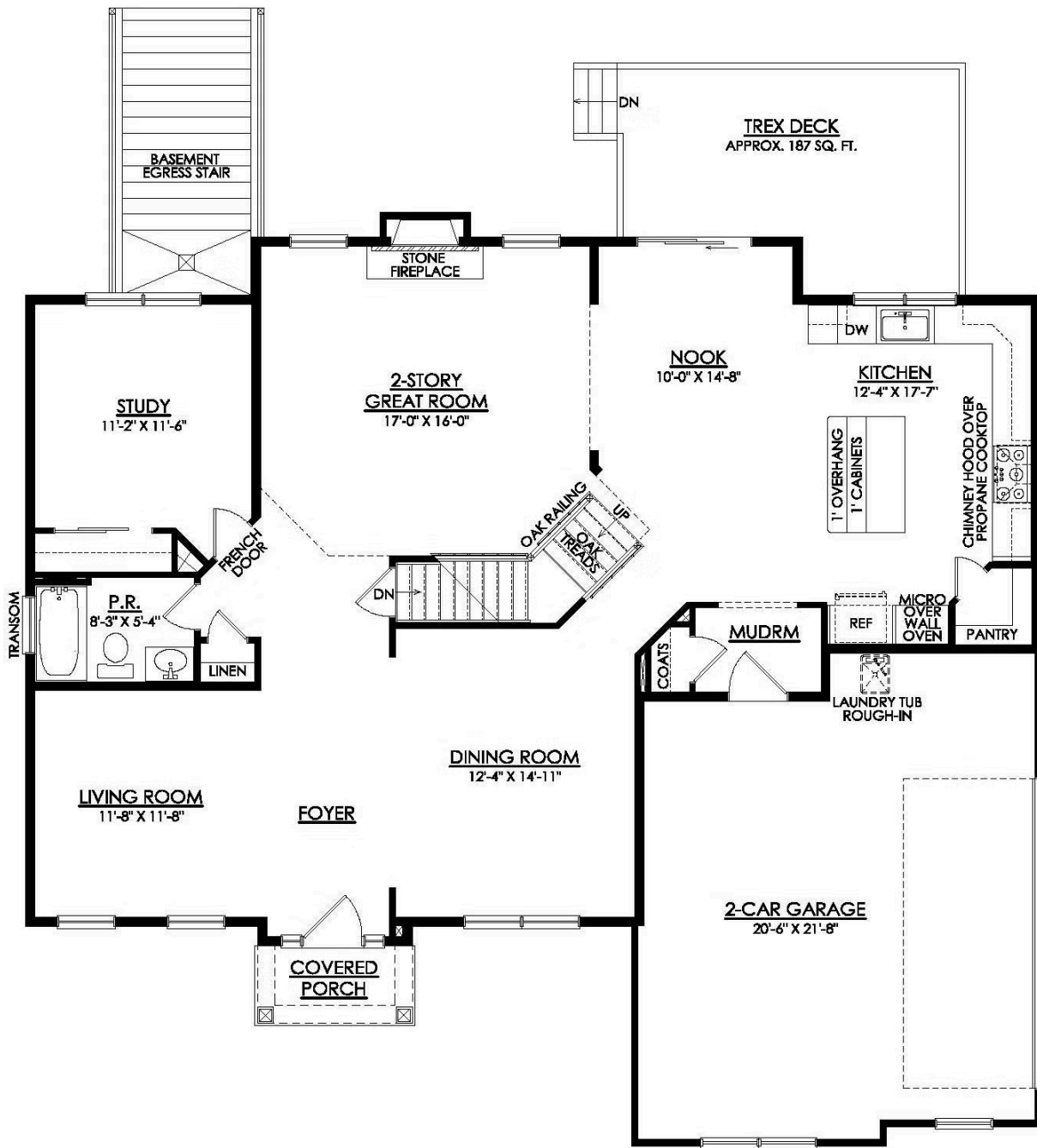
Discover the perfect family home in The Churchill! This beauty offers over 3,000 sq ft of living space on 1+ acres in the Parkland School District. The 2-story Great Room sets the tone of this open-concept floor plan, while the living room provides a warm and inviting space for gatherings. The gourmet Kitchen is a chef's dream with GE Stainless Steel appliances, ample countertop space, a... [Read More at tuskeshomes.com](https://tuskeshomes.com)

HOME FEATURES

- 4 Bedrooms
- 3 Baths
- 2-Car Garage
- 9' Full Basement with Egress Stairs and Rough-In for Future Full Bath
- 12'x18' Trex Deck with White Vinyl Railing & Steps to Grade
- Large Kitchen including Pantry and Oversized Island with Quartz Top and 1' Overhang
- 2-Story Great Room including a Direct Vent Fireplace with Stone-to-Ceiling
- Full Bathroom with Fiberglass Tub in 1st Floor Powder Room
- Mudroom with Coat Closet
- Spacious Owners' Suite with Tray Ceiling, Walk-In Closet, and Double Vanity
- Ample Closet Space Throughout Home
- Enhanced Kitchen, Great Room, and Owners' Bedroom Lighting Packages with Additional LED Recessed Lighting
- Oak Railing and Oak Stained Treads
- Premium Hardie® Fiber Cement Siding Designed to withstand the harshest elements
- 1+ Acre Homesite
- Parkland School District

3486 GEORGE STREET #2

Schnecksville, PA 18078



3486 GEORGE STREET #2

Schnecksville, PA 18078

