

# 4390 Maple Street #8A

Schnecksville, PA 18078

## HOME DETAILS

4 Beds 2.5 Baths 2,828 Sq Ft  
 2 Story 2 Car Garage



Farmhouse Elevation - Side Entry Garage

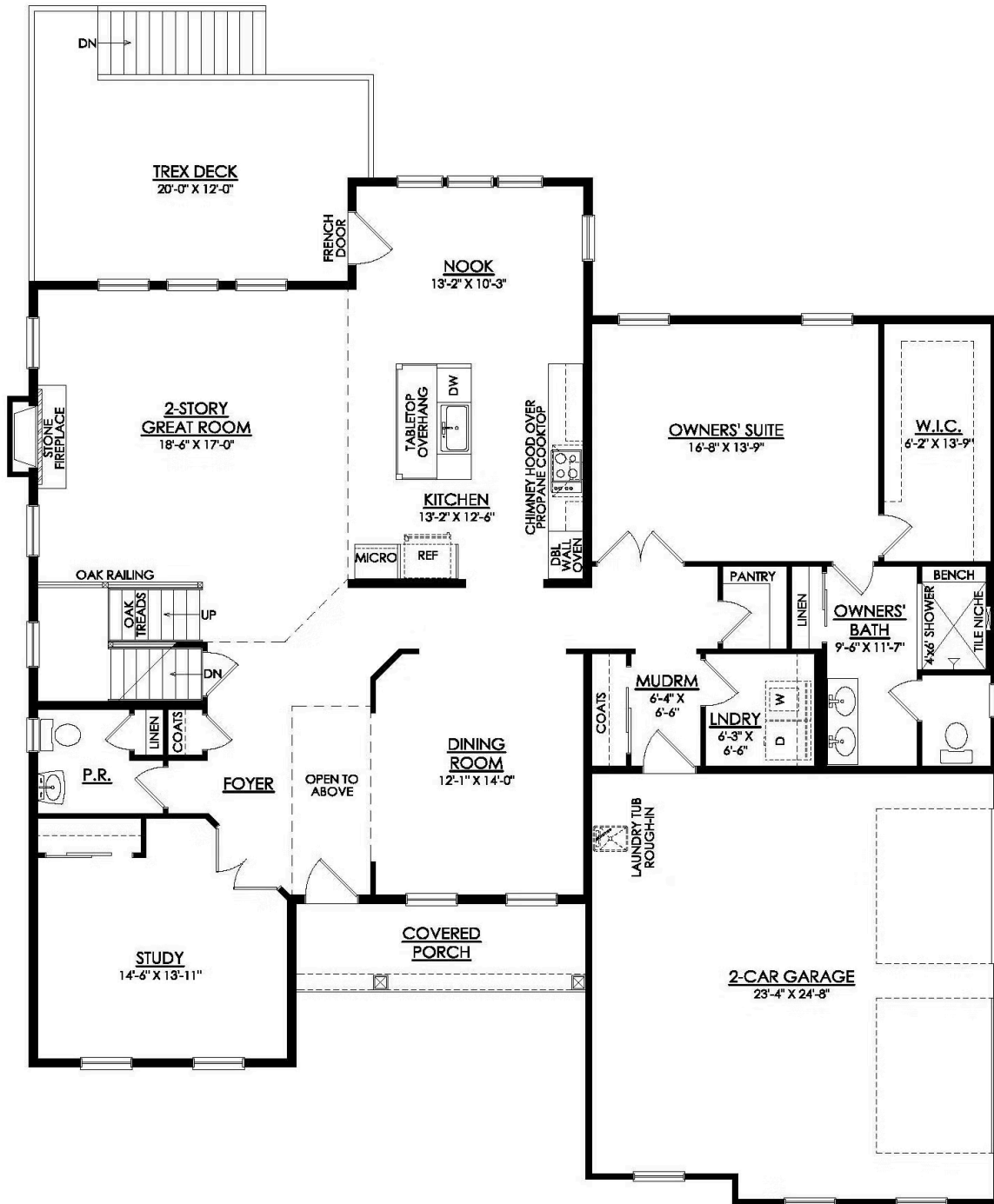
We start the design - You complete it! This Quick Delivery Sienna in the Parkland School District on 1.5 Acres provides the unique opportunity to choose your own interior finishes. The spacious Sienna features an open-concept open living space that's designed for entertaining. The Kitchen boasts generous countertop space and a spacious island. Dine in elegance in the formal Dining Room or ...  
[Read More at tuskeshomes.com](http://tuskeshomes.com)

## HOME FEATURES

- 4 Bedrooms
- 2.5 Baths
- 2-Car Garage
- 12'x20' Trex Deck with White Vinyl Railing and Steps to Grade
- 9' Daylight Basement with Egress Sliding Window and Rough-In for Future Full Bath
- 1st Floor Owners' Suite including Large Walk-In Closet and Fully Tiled 4'x6' Shower with Tiled Niche
- 2-Story Great Room with Stone-to-Ceiling Fireplace and Enhanced Fireplace Window Package
- Walk-In Pantry
- Large Kitchen Island with Spacious Overhang for Additional Seating
- 1st Floor Laundry Room
- Mudroom with Coat Closet
- 3 Additional 2nd Floor Bedrooms with Hall Bath
- 1.5 Acres Homesite
- Parkland School District

# 4390 MAPLE STREET #8A

Schnecksville, PA 18078



# 4390 MAPLE STREET #8A

Schnecksville, PA 18078

