

4450 Maple Street #2

Schnecksville, PA 18078

HOME DETAILS

4 Beds 3.5 Baths 3,141 Sq Ft
 2 Story 2 Car Garage



Exterior

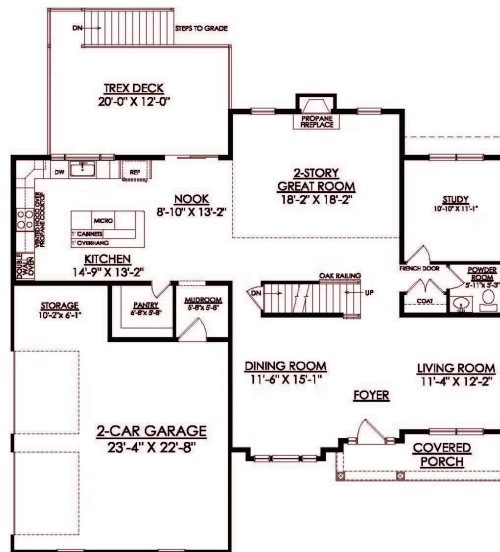
Experience luxury living the Breckenridge Grande, offering over 3,000 sq. ft. of living space on 2.5 acres! Entertain in the stunning 2-story Great Room or relax in the nearby Living Room. The enormous kitchen features stainless steel appliances, ample counter space, and storage to fulfill all of your cooking needs. The Dining Room is perfect for formal dinners while the Study with amazi... Read More at tuskeshomes.com

HOME FEATURES

- 4 Bedrooms
- 3.5 Bathrooms
- 2-Car Garage
- 3141 Square Feet
- Spacious 2.5-Acre Homesite
- 9' Walkout Basement with 1 Window and Sliding Glass Door
- 12' x 20' Trex Deck with White Vinyl Railing and Steps to Grade
- Expanded Pantry
- Expanded Kitchen Island with Quartz Countertops
- GE Stainless Steel Range/Oven, Microwave, Dishwasher, and Fridge with Ice & Water Dispenser
- Private Owner's Suite with Sitting Area
- 2nd Floor Laundry Room
- Mudroom with Built-In Boot Bench
- Accent Painting in Great Room, Dining Room, and Owner's Bedroom

4450 MAPLE STREET #2

Schnecksville, PA 18078



**BRECKENRIDGE GRANDE
TRADITIONAL**
MAPLE STREET AT GREENLEAF FIELDS LOT 02
3141 SF

1ST FLOOR PLAN

4450 MAPLE STREET #2

Schnecksville, PA 18078



**BRECKENRIDGE GRANDE
TRADITIONAL**
MAPLE STREET AT GREENLEAF FIELDS LOT 02
3141 SF

2ND FLOOR PLAN