

4450 Maple Street #2

Schnecksville, PA 18078

HOME DETAILS

- 4 Beds
- 3.5 Baths
- 3,141 Sq Ft
- 2 Story
- 2 Car Garage



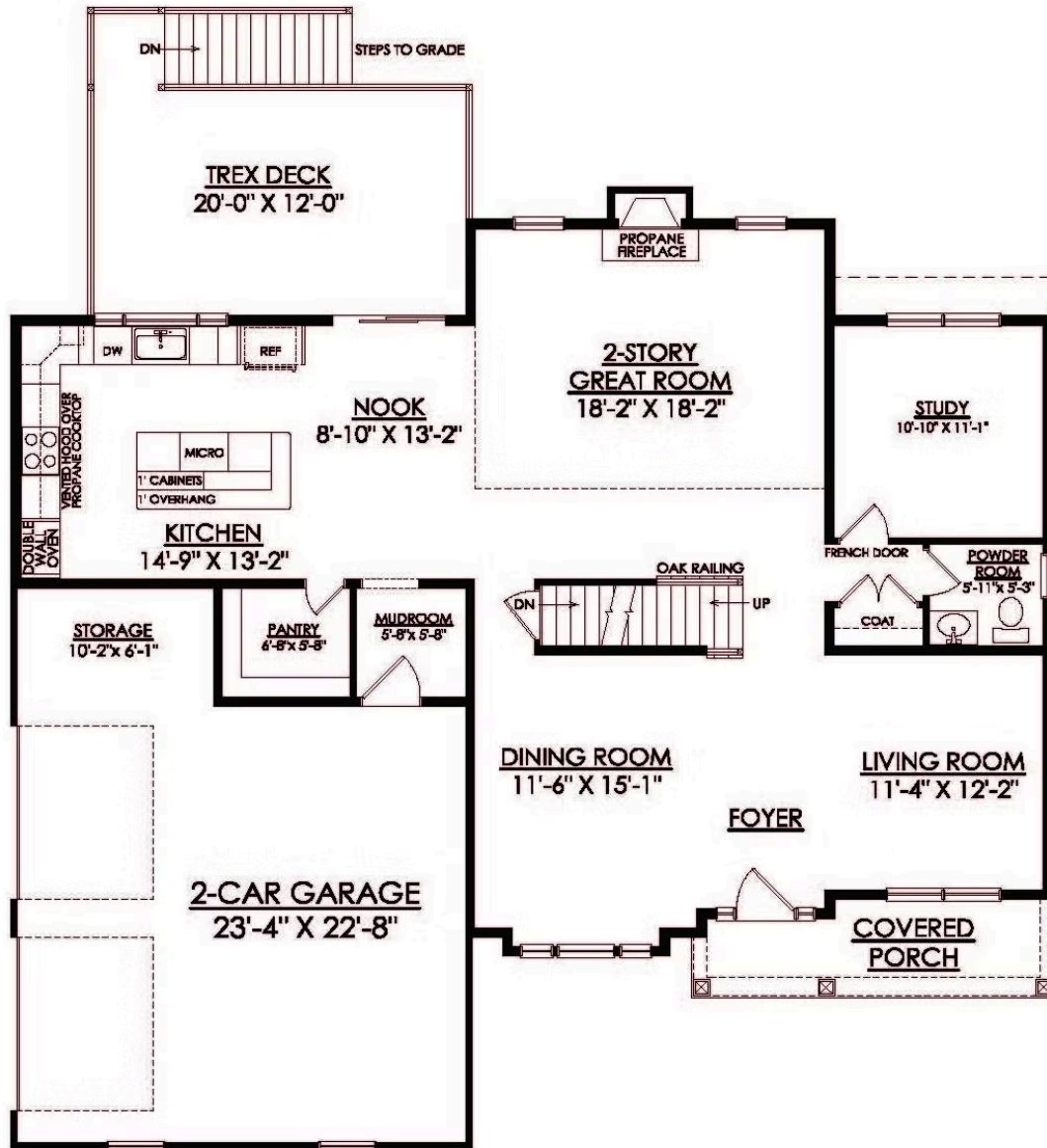
Experience luxury living the Breckenridge Grande, offering over 3,000 sq. ft. of living space on 2.5 acres in the Parkland School District! Entertain friends and family in the stunning 2-story Great Room or relax in the nearby Living Room. Whip up delicious meals in the Kitchen featuring GE stainless steel appliances, ample quartz counter space, large walk-in Pantry, and storage to fulfil... Read More at tuskeshomes.com

HOME FEATURES

- 4 Bedrooms
- 3.5 Bathrooms
- 2-Car Garage
- 3,141 Square Feet
- Spacious 2.5-Acre Homesite in the Parkland School District
- 9' Walkout Basement with Sliding Glass Door and Rough-In for Future Full Bath
- 12' x 20' Trex Deck with White Vinyl Railing and Steps to Grade
- Expanded Walk-In Pantry
- Widened Kitchen Island with Quartz Countertops
- 2 Kichler Pendants Above Kitchen Island
- GE Stainless Steel Range/Oven, Microwave, Dishwasher, and Fridge with Ice & Water Dispenser
- Private Owner's Suite with Sitting Area and 2 Walk-In Closets
- Fully Tiled 4'x6' Owners' Shower with Bench
- Oak Railings and Oak Stained Treads
- 2nd Floor Laundry Room
- Mudroom with Built-In Boot Bench
- Unique Accent Painting in Great Room, Dining Room, and Owner's Bedroom
- Room Lighting Packages in Kitchen, Great Room, and Owners' Bedroom to Add Additional LED Recessed Lights

4450 MAPLE STREET #2

Schnecksville, PA 18078



4450 MAPLE STREET #2

Schnecksville, PA 18078

