

Bellwood Floor Plan

In Greenleaf Fields at Parkland from **\$779,900**

PLAN DETAILS

Pricing from **\$779,900**

4 Beds 2.5 Baths 2,640 Sq Ft

2 Story 2 Car Garage



Country Elevation

The Bellwood's open design and versatile space offers plenty of room for day-to-day living and entertaining. Upon entering The Bellwood, you're greeted by an expansive and airy Foyer, a formal Dining Room, and private Study. Just beyond lies the inter-connected Great Room, Kitchen, and Dining Nook with open sight-lines throughout, allowing you to entertain your guests with ease. The Kitchen features an island with an overhang for extra seating, plus a convenient walk-in pantry for organizing your essentials. The Great Room includes a fireplace which can be framed with two optional windows, allowing natural light to illuminate your home. A Mud Room, Laundry Room, 2-Car Garage, and Powder Room finish off The Bellwood's first floor. Head upstairs to the Owners' Suite, where you'll find a massi ... Read More at tuskeshomes.com

PLAN FEATURES

- 4 Bedrooms
- 2.5 Bathrooms
- 2-Car Garage
- Starting at 2,640 Square Feet
- 1st Floor Laundry Room
- Chef's Kitchen with Stainless Steel Chimney Hood, Wall Oven, 5-Burner Gas Cooktop, and 42" Walk-in Cabinetry

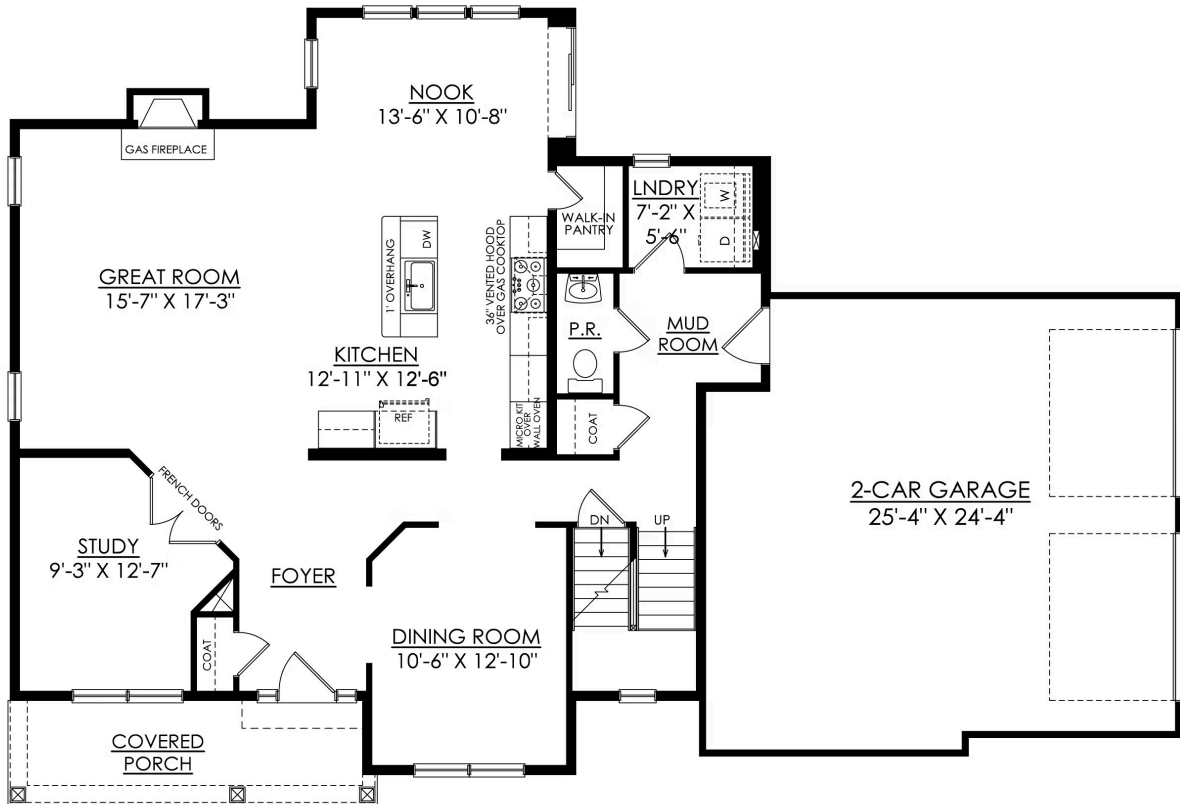
Bellwood Floor Plan

In Greenleaf Fields at Parkland from \$779,900



Bellwood Floor Plan

In Greenleaf Fields at Parkland from \$779,900



BELLWOOD TRADITIONAL SE
STARTING AT 2640 SF
ESTATE

1ST FLOOR PLAN

Bellwood Floor Plan

In Greenleaf Fields at Parkland from \$779,900



BELLWOOD TRADITIONAL SE
STARTING AT 2640 SF
ESTATE

2ND FLOOR PLAN



Bellwood Floor Plan

In Greenleaf Fields at Parkland from **\$779,900**



Bellwood Floor Plan

In Greenleaf Fields at Parkland from **\$779,900**



Bellwood Floor Plan

In Greenleaf Fields at Parkland from **\$779,900**



Bellwood Floor Plan

In Greenleaf Fields at Parkland from **\$779,900**



Bellwood Floor Plan

In Greenleaf Fields at Parkland from **\$779,900**