

Folino Floor Plan

In Greenleaf Fields at Parkland from \$719,900

PLAN DETAILS

Pricing from \$719,900

3 Beds 2.0 Baths 2,134 Sq Ft

1 Story 2 Car Garage



Craftsman Elevation - Side Entry

The Folino is an elegant ranch-style home with a comfortable design and alluring exterior. Step into the welcoming Foyer and continue to a private Study, two Bedrooms, and shared Hall Bath that set the tone for this sophisticated abode. The heart of this home is the open-concept Great Room, Kitchen, and Dining Room that making entertaining an effortless experience. The Kitchen boasts a large island with an overhang, offering ample seating for guests, a convenient corner pantry, and plenty of countertop space. The Great Room is bathed in natural light and leads to your backyard through a sliding door. Relax in style in your very own private haven as you enter the Owners' Suite, boasting a spacious walk-in closet and a luxurious ensuite Bath with a double vanity, linen closet, large shower, ... Read More at tuskeshomes.com

PLAN FEATURES

- 3 Bedrooms
- 2 Bathrooms
- 2-Car Garage
- Starting at 2,134 Square Feet
- Chef's Kitchen with Stainless Steel Chimney Hood, Wall Oven, 5-Burner Gas Cooktop, and 42" Wellborn Cabinetry
- Kitchen Island with Granite or Quartz Countertops
- Stainless Steel Range/Oven, Microwave, and Dishwasher
- Ranch Style Floor Plan
- Mudroom
- Study
- Optional Morning Room
- Private Owners' Suite featuring Fully Tiled 4'x6' Shower with Quartz Bench in Private Bath
- Beautifully Resilient Hardie® Fiber Cement Siding

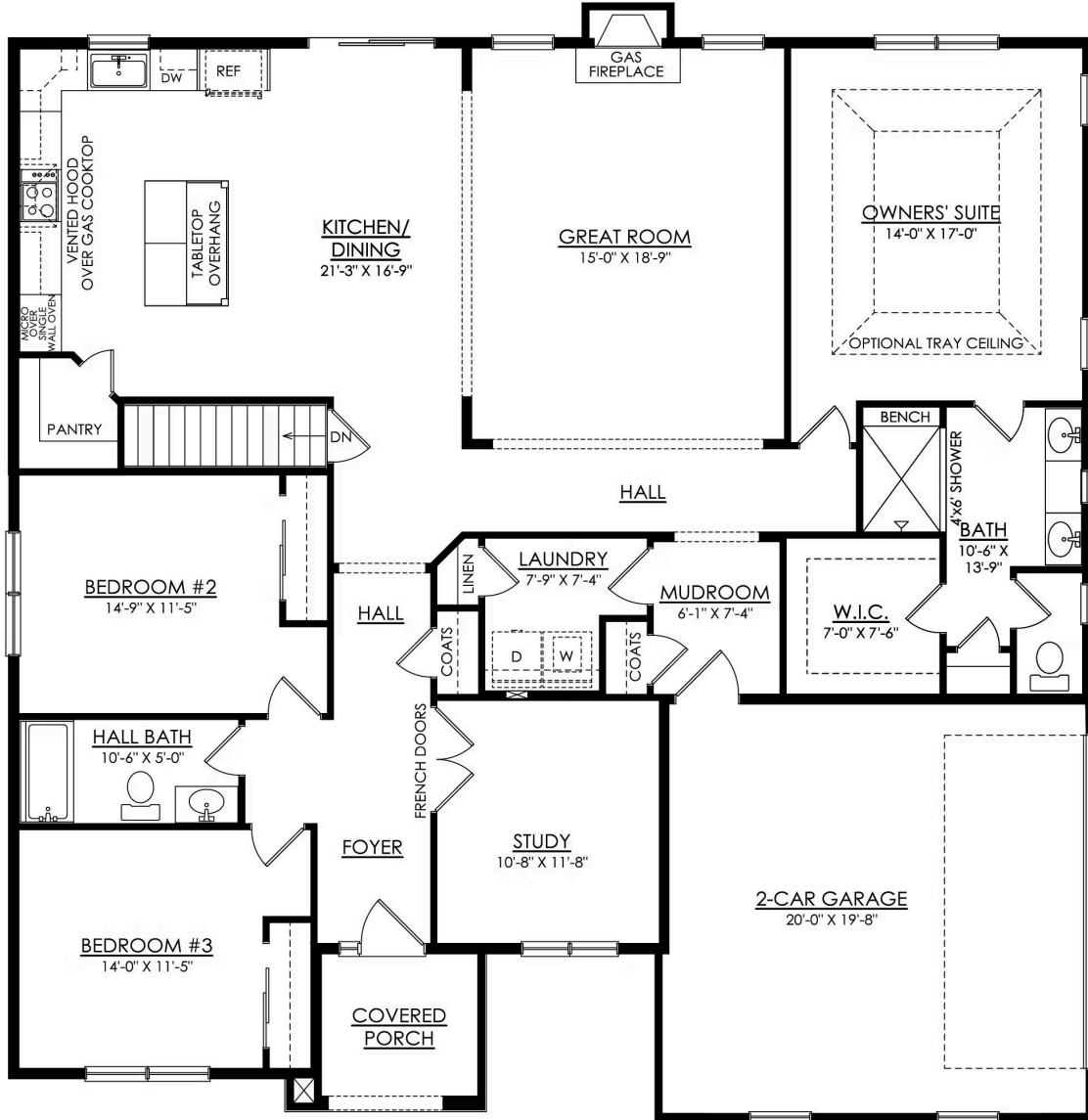
Folino Floor Plan

In Greenleaf Fields at Parkland from \$719,900



Folino Floor Plan

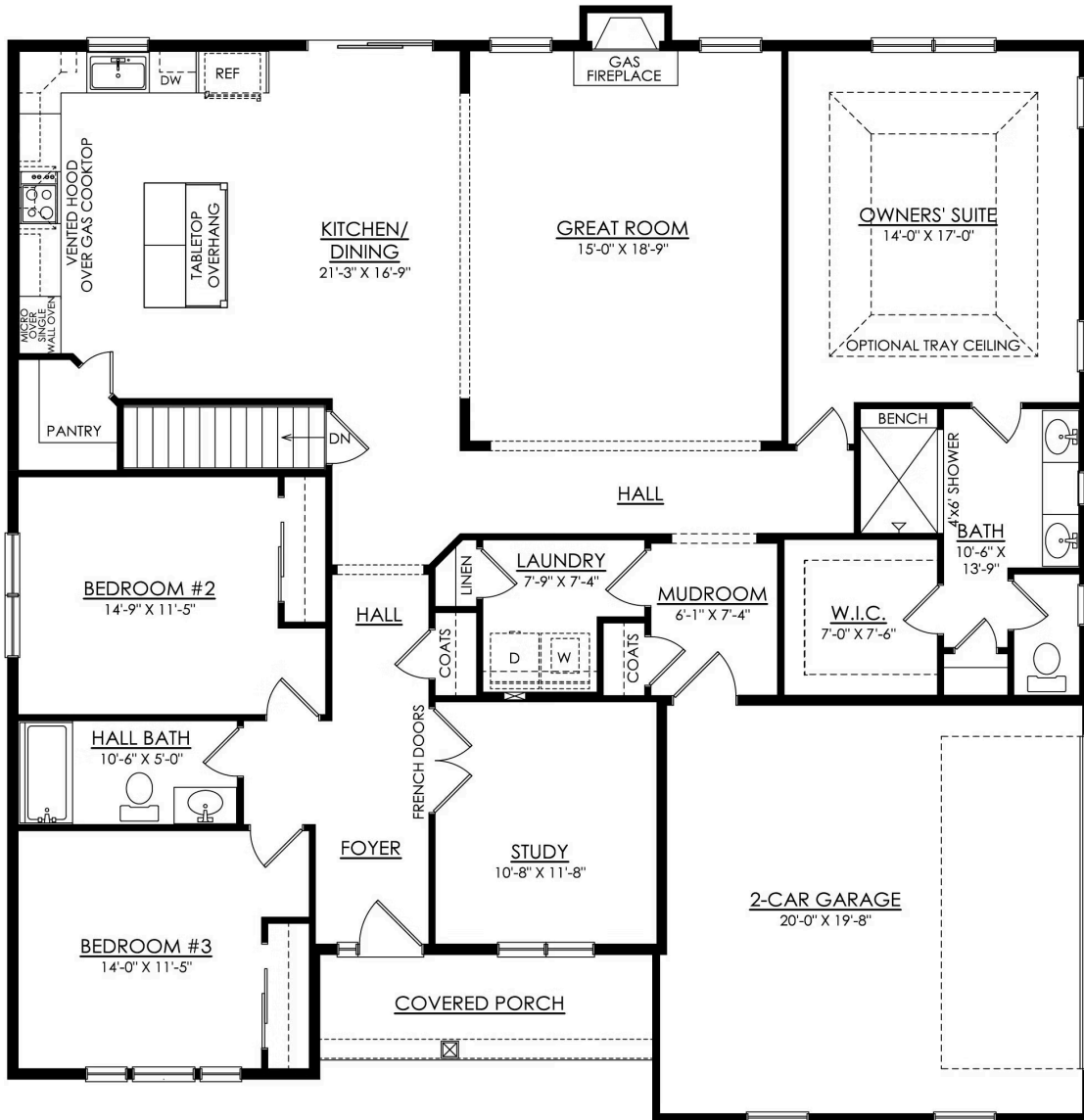
In Greenleaf Fields at Parkland from \$719,900



FOLINO COTTAGE SE
1ST FLOOR PLAN
ESTATE

Folino Floor Plan

In Greenleaf Fields at Parkland from \$719,900



FOLINO CRAFTSMAN SE 1ST FLOOR PLAN ESTATE



Folino Floor Plan

In Greenleaf Fields at Parkland from **\$719,900**