

Juniper Floor Plan

In Greenleaf Fields at Parkland from **\$859,900**

PLAN DETAILS

Pricing from **\$859,900**

4 Beds 3.5 Baths 3,307 Sq Ft

2 Story 2 Car Garage



Farmhouse Elevation - Side Entry Garage

Elevate your lifestyle with the Juniper, offering the perfect balance of privacy and comfort for you and your family. An impressive two-story Foyer sets the tone for this home's spacious open-concept main living area. The Kitchen is a cook's dream, with an expanded island, a walk-in pantry, and a butler's pantry for serving drinks or snacks. The airy 2-story Great Room boasts a gas fireplace and plenty of windows for natural light. A private Study and Powder Room complete the 1st floor layout. Head up the open staircase to find an enormous Owner's Suite with sitting area, a walk-in closets, and private Owner's Bath. Additionally, a Guest Suite with its own Bath, two additional Bedrooms that share a Jack-n-Jill bath, and a convenient 2nd floor laundry room can also be found on the 2nd ... Read More at tuskeshomes.com

PLAN FEATURES

4 Bedrooms
3.5 Bathrooms
2-Car Garage
Starting at 3307 Square Feet
Kitchen with Granite or Quartz Countertops
Stainless Steel Range/Oven, Microwave, and Dishwasher
Butler's Pantry

Juniper Floor Plan

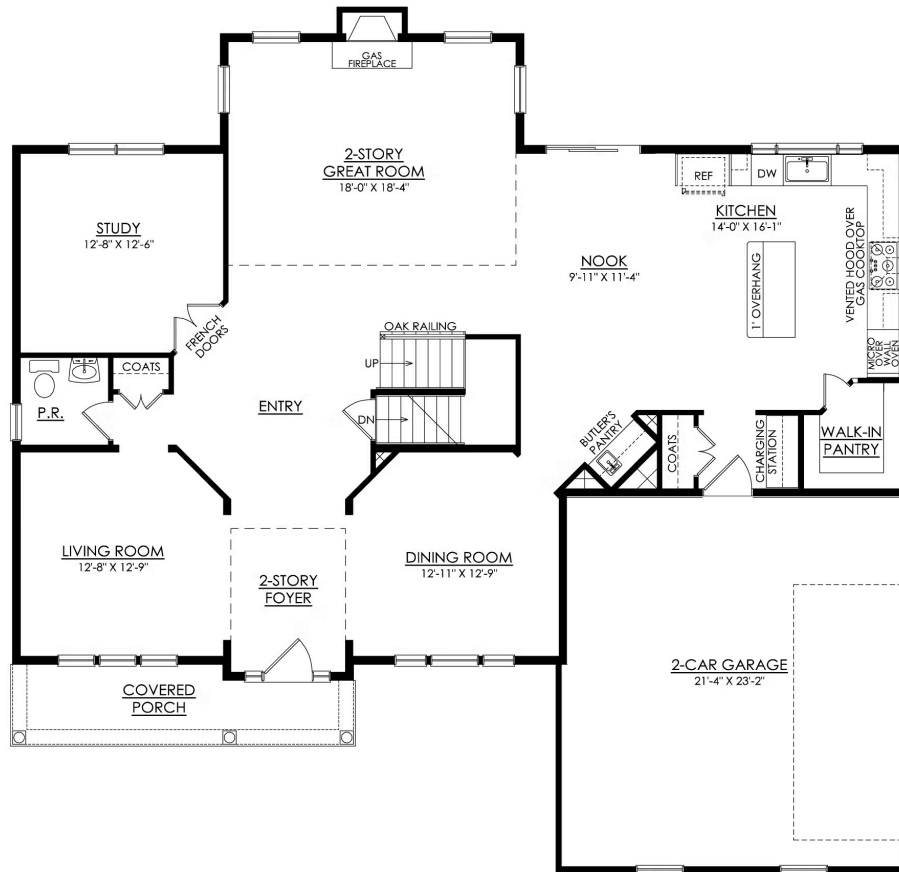
In Greenleaf Fields at Parkland from **\$859,900**



Traditional Elevation - Side Entry Garage

Juniper Floor Plan

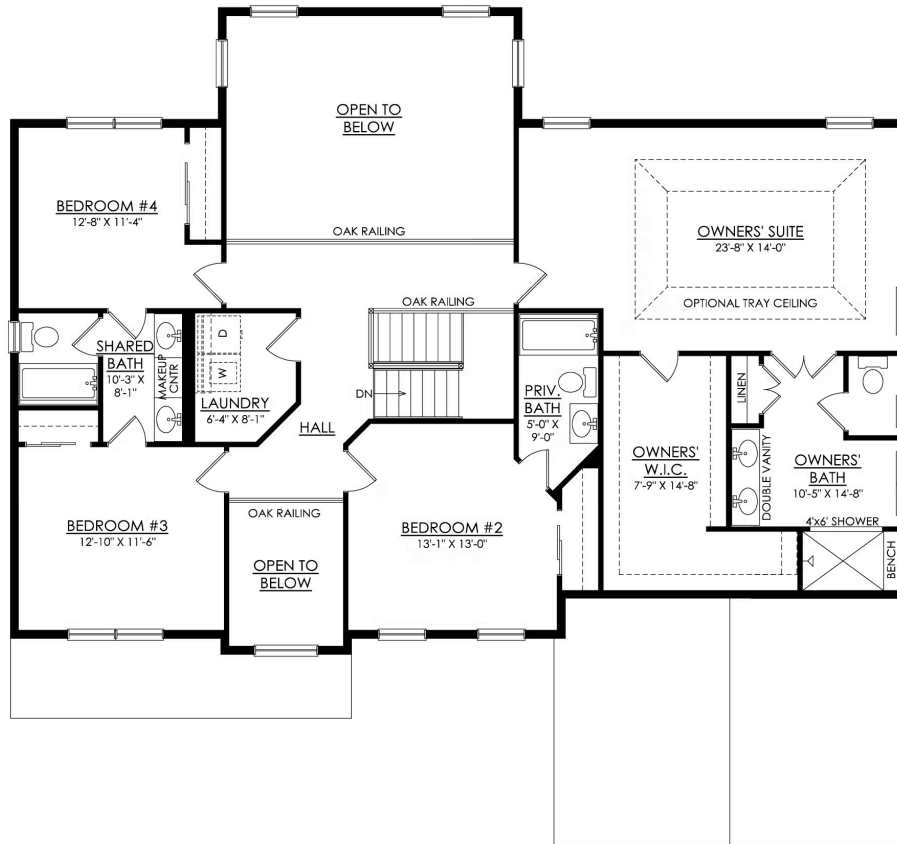
In Greenleaf Fields at Parkland from **\$859,900**



JUNIPER FARMHOUSE 1ST FLOOR PLAN ESTATE

Juniper Floor Plan

In Greenleaf Fields at Parkland from **\$859,900**



JUNIPER FARMHOUSE
2ND FLOOR PLAN
ESTATE



Juniper Floor Plan

In Greenleaf Fields at Parkland from **\$859,900**



Juniper Floor Plan

In Greenleaf Fields at Parkland from **\$859,900**