

Maverick Floor Plan

In Greenleaf Fields at Parkland from **\$954,900**

PLAN DETAILS

Pricing from **\$954,900**

5 Beds 4.5 Baths 4,133 Sq Ft

2 Story 3 Car Garage



Farmhouse Elevation

The Maverick is an architectural gem that embodies modern farmhouse style with its spacious 4100 sq ft. floor plan. Ideal for multi-generational living, this home features multiple common areas and bedrooms on both floors, providing maximum comfort and convenience. Its sleek, contemporary design seamlessly integrates function and style, making it the perfect place for families to create lasting memories. Step into the charming Foyer and be welcomed into its magnificent living spaces. The Kitchen features ample counter space, a large island with seating, and a walk-in Pantry. The nearby Great Room is anchored by a cozy gas fireplace, windows with backyard views, and opens to a formal Dining Room. The Family Room is a luxurious escape with cathedral ceilings, a sliding door leading to t ... Read More at tuskeshomes.com

PLAN FEATURES

- 5 Bedrooms
- 4.5 Bathrooms
- 3-Car Garage
- Starting at 4,133 Square Feet
- Chef's Kitchen with Stainless Steel Chimney Hood, Wall Oven, 5-Burner Gas Cooktop, and 42" Wellborn Cabinetry
- Your Choice of Granite or Quartz Kitchen

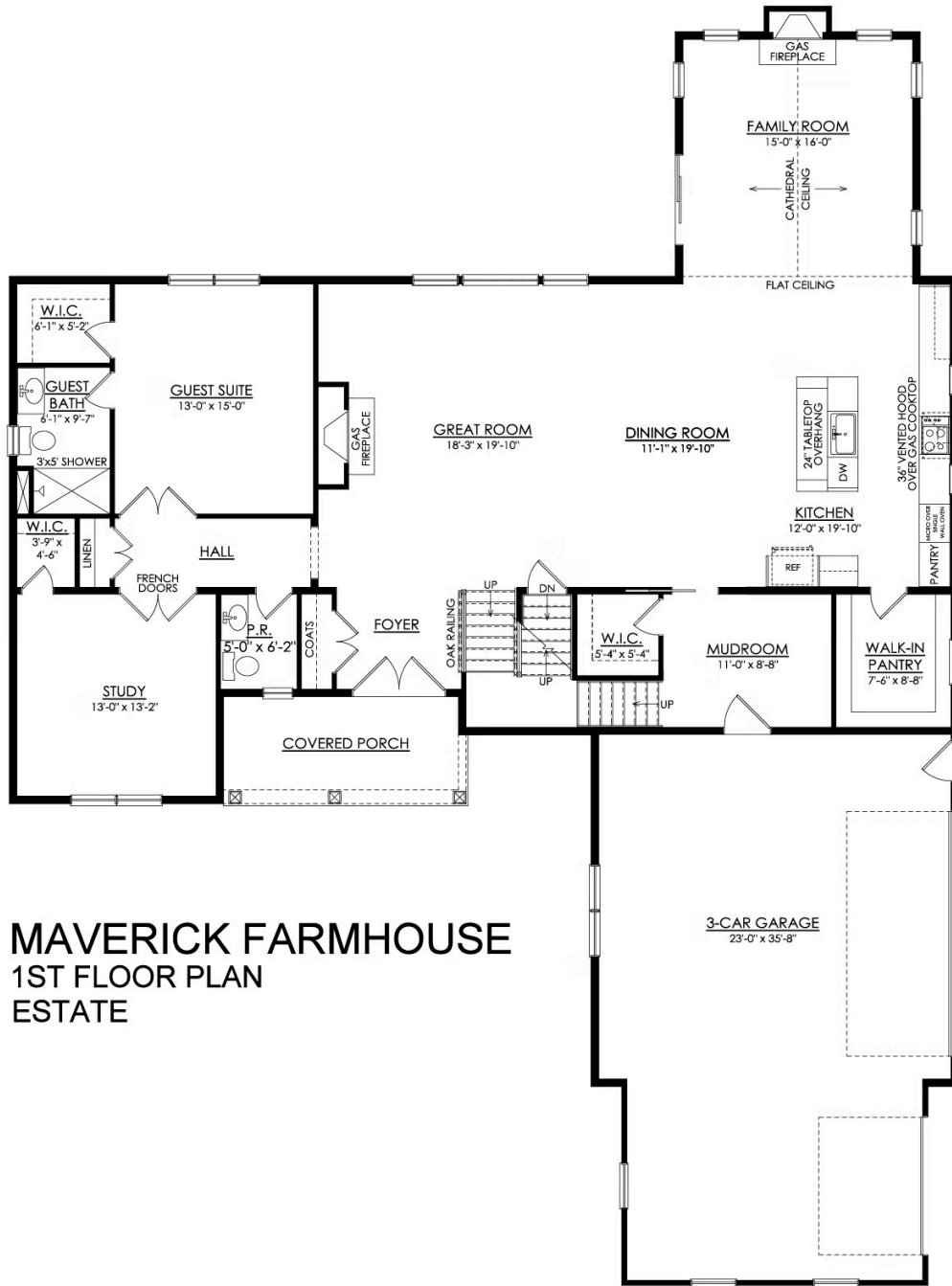
Maverick Floor Plan

In Greenleaf Fields at Parkland from **\$954,900**



Maverick Floor Plan

In Greenleaf Fields at Parkland from \$954,900



MAVERICK FARMHOUSE
1ST FLOOR PLAN
ESTATE



Maverick Floor Plan

In Greenleaf Fields at Parkland from **\$954,900**



Maverick Floor Plan

In Greenleaf Fields at Parkland from **\$954,900**



Maverick Floor Plan

In Greenleaf Fields at Parkland from **\$954,900**



Maverick Floor Plan

In Greenleaf Fields at Parkland from **\$954,900**