

Magnolia Floor Plan

In Greenleaf Fields at Parkland from **\$769,900**

PLAN DETAILS

Pricing from **\$769,900**

4 Beds 2.5 Baths 2,820 Sq Ft

2 Story 2 Car Garage



Craftsman Elevation - Side Entry Garage

Step into opulence with The Magnolia, a stunning floorplan starting at 2820 sq ft. The Kitchen boasts a large island with seating, granite or quartz countertops, and a dining Nook surrounded by windows. The main level also includes a spacious Great Room, formal Dining Room, Private Study with French doors, Powder Room, Mudroom, and welcoming Foyer. Upstairs, the Owner's Suite features a spacious walk-in closet with an attached Owner's Bath. 3 additional bedrooms, a shared hall bath, and a 2nd floor Laundry Room complete the layout. For even more space, consider the optional Bonus Room above the Garage, perfect for a 5th Bedroom, second Home Office, or Play Room. Some images, videos, virtual tours shown may be from a previously built Tuskes home of similar design. Actual option ... Read More at tuskeshomes.com

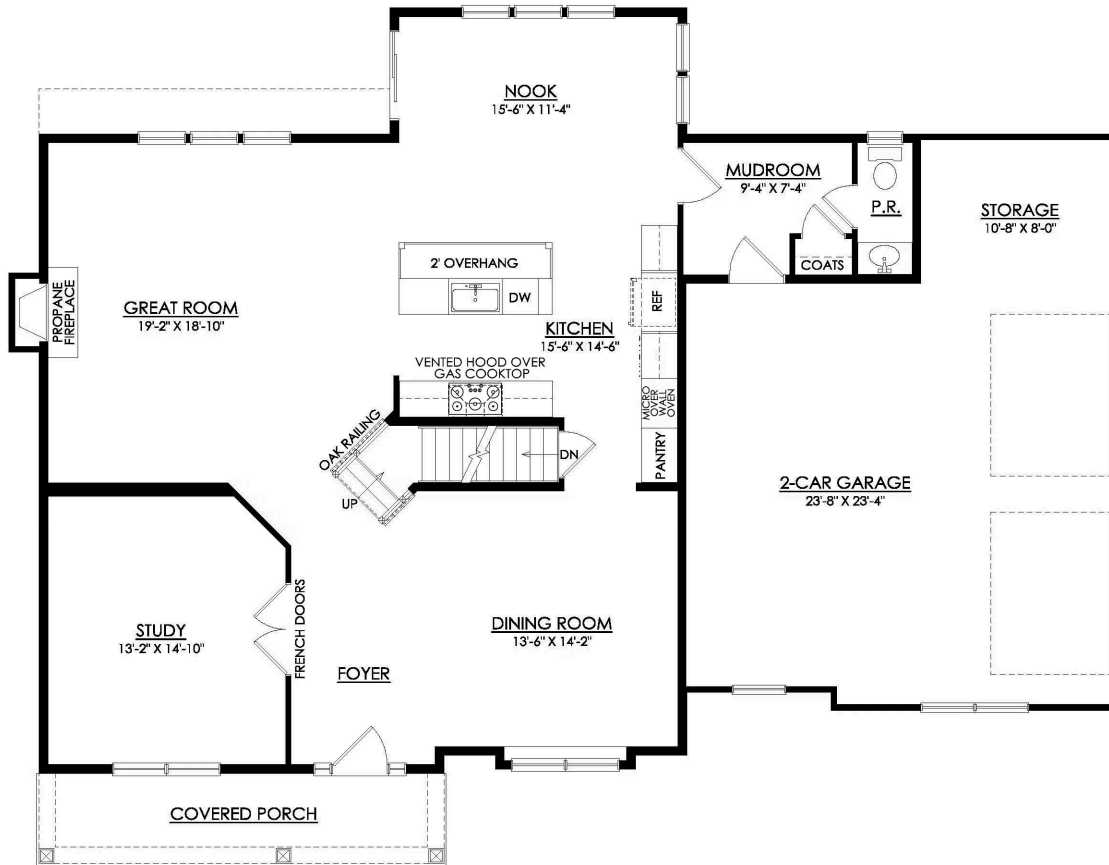
Magnolia Floor Plan

In Greenleaf Fields at Parkland from **\$769,900**



Magnolia Floor Plan

In Greenleaf Fields at Parkland from \$769,900

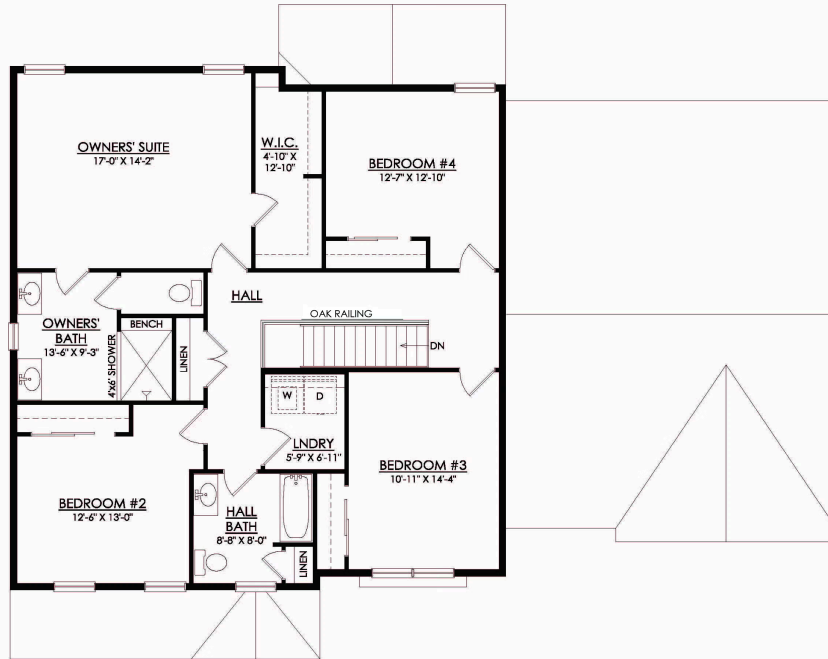


**MAGNOLIA FARMHOUSE
ESTATE**

1ST FLOOR PLAN

Magnolia Floor Plan

In Greenleaf Fields at Parkland from **\$769,900**



MAGNOLIA FARMHOUSE
ESTATE

2ND FLOOR PLAN



Magnolia Floor Plan

In Greenleaf Fields at Parkland from **\$769,900**



Magnolia Floor Plan

In Greenleaf Fields at Parkland from **\$769,900**



Magnolia Floor Plan

In Greenleaf Fields at Parkland from **\$769,900**