

Preakness Floor Plan

In Greenleaf Fields at Parkland from **\$899,900**

PLAN DETAILS

Pricing from **\$899,900**

4 Beds 3.5 Baths 3,763 Sq Ft

2 Story 3 Car Garage



Traditional Elevation

The Preakness floorplan offers luxury and grandeur in a magnificent layout with over 3700 sq ft of living space. Step into the awe-inspiring two-story Foyer and Great Room, each with their own staircase. The Kitchen features a stunning island, complete with an overhang bar perfect for entertaining. The walk-in pantry and butler's pantry are conveniently located, ready to store all your culinary essentials. The adjacent dining Nook includes a sliding patio door that opens to the backyard, inviting the outdoors in for al fresco dining and unforgettable memories. A formal Dining Room, Living Room, private Study, and Powder Room complete the main living areas of this home. Upstairs, soak in the lavishness of the private Owner's Suite which features a dressing area, spacious walk-in closets, and ... Read More at tuskeshomes.com

PLAN FEATURES

Preakness Floor Plan

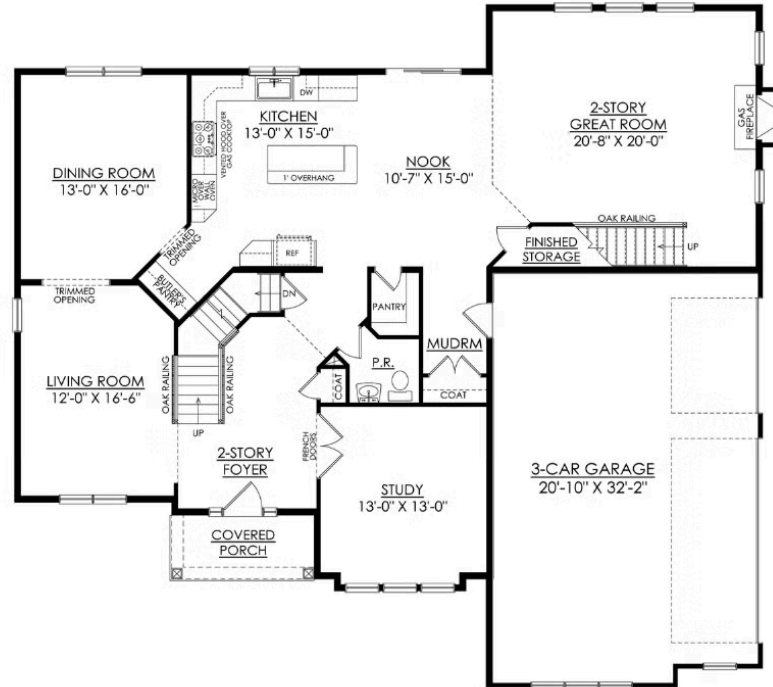
In Greenleaf Fields at Parkland from **\$899,900**



Farmhouse Elevation

Preakness Floor Plan

In Greenleaf Fields at Parkland from **\$899,900**

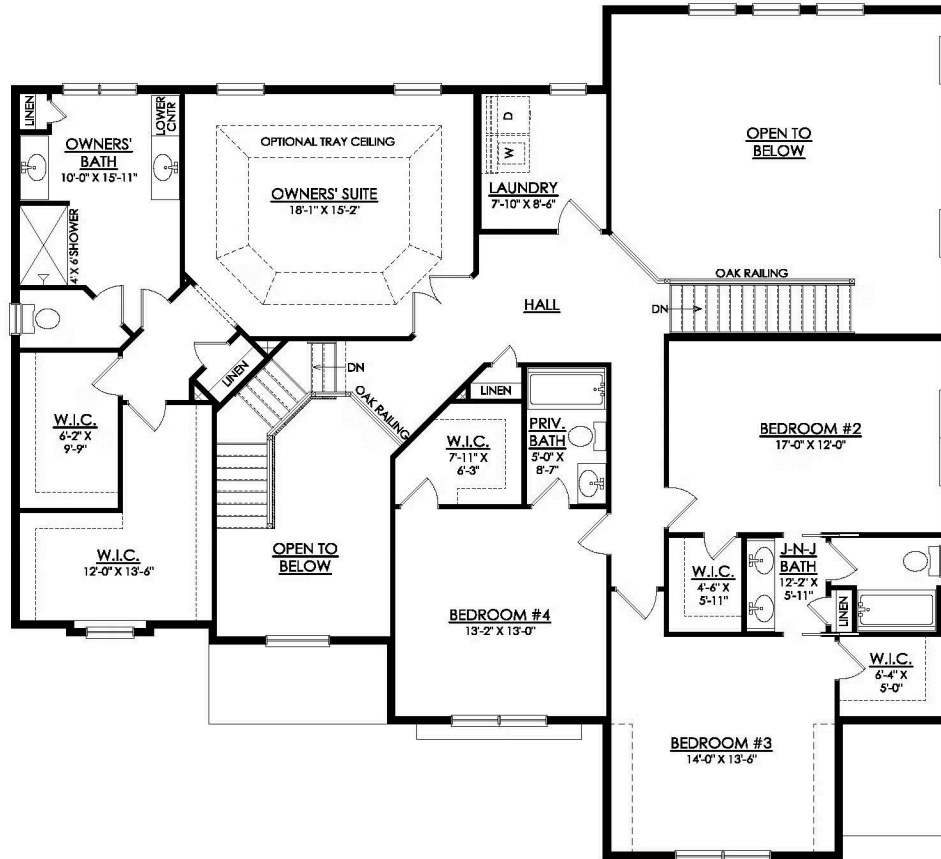


**PREAKNESS TRADITIONAL
ESTATE**

1ST FLOOR PLAN

Preakness Floor Plan

In Greenleaf Fields at Parkland from \$899,900



PREAKNESS TRADITIONAL
2nd FLOOR PLAN
ESTATE



Preakness Floor Plan

In Greenleaf Fields at Parkland from **\$899,900**



Preakness Floor Plan

In Greenleaf Fields at Parkland from **\$899,900**



Preakness Floor Plan

In Greenleaf Fields at Parkland from **\$899,900**



Preakness Floor Plan

In Greenleaf Fields at Parkland from **\$899,900**



Preakness Floor Plan

In Greenleaf Fields at Parkland from **\$899,900**



Preakness Floor Plan

In Greenleaf Fields at Parkland from **\$899,900**



Preakness Floor Plan

In Greenleaf Fields at Parkland from **\$899,900**



Preakness Floor Plan

In Greenleaf Fields at Parkland from **\$899,900**