

5020 Bellflower Drive #1

Schnecksville, PA 18078

HOME DETAILS

4 Beds
 2.5 Baths
 2,746 Sq Ft
 3 Story
 2 Garage

This Whitehall Craftsman that's under construction at our Ridings at Parkland community will be ready for it's new owners by the end of the year!The Whitehall takes home design to a new level, with a gorgeous elevated front porch and unique floorplan. As you enter this home through the 2 Car Garage with an additional storage area, you'll find a Family Foyer that's a perfect staging area ... [Read More at tuskeshomes.com](#)

HOME FEATURES

Three Level Home

Luxury Vinyl Plank flooring throughout the 2nd Floor (Foyer, Entry, Great Room, Kitchen, Dining Room, and Powder Room)

39" Gas Fireplace with Upgraded Mantle

Expanded Kitchen Island

Stainless Steel Pyramid Chimney Hood over Oven/Range

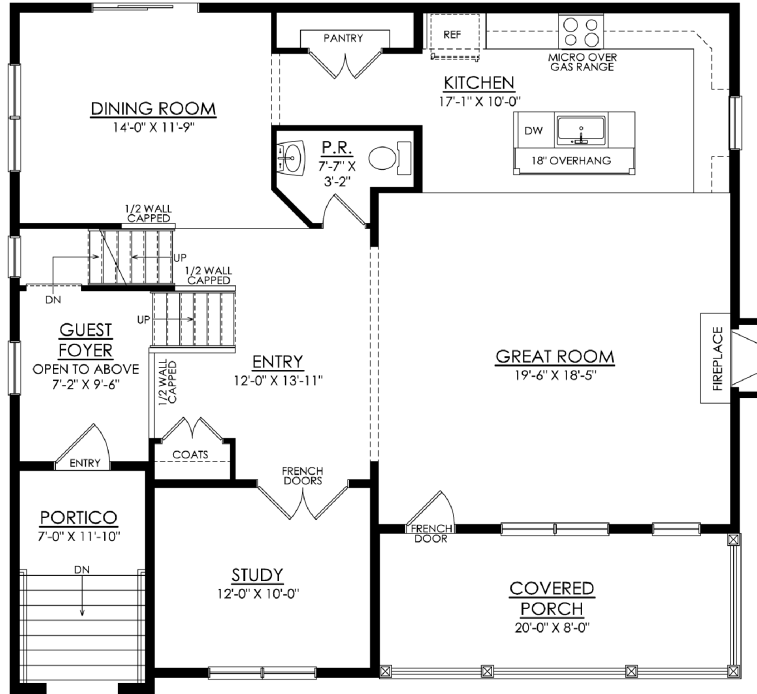
Quartz Vanity Countertops in Owners' Bath

Additional Basement Bedroom with Closet

Rough-in plumbing for a future full Basement Bathroom

5020 BELLFLOWER DRIVE #1

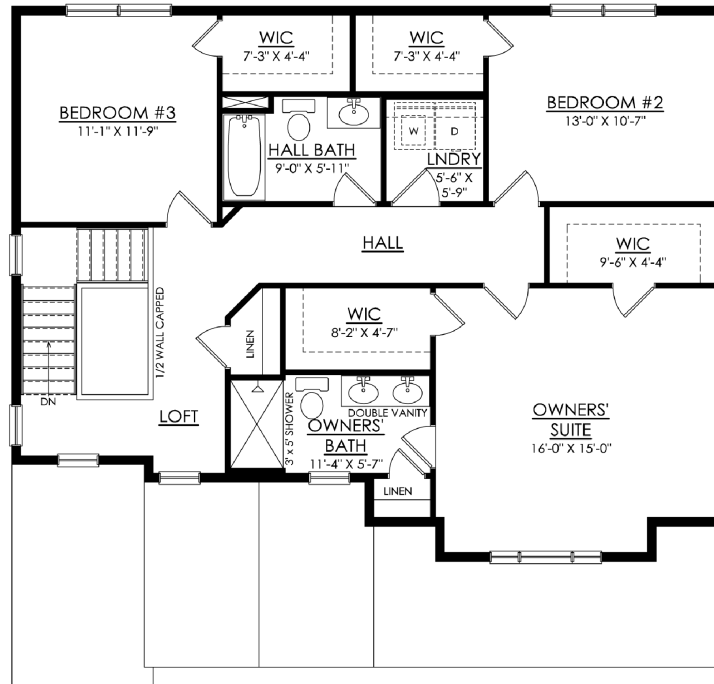
Schnecksville, PA 18078



WHITEHALL CRAFTSMAN STARTING AT 2546 SF 1ST FLOOR PLAN

5020 BELLFLOWER DRIVE #1

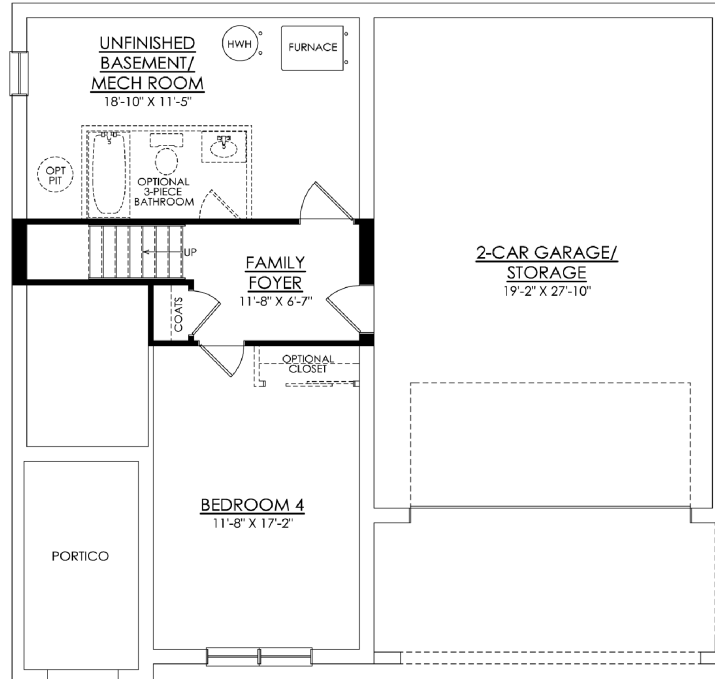
Schnecksville, PA 18078



WHITEHALL CRAFTSMAN STARTING AT 2546 SF 2ND FLOOR PLAN

5020 BELLFLOWER DRIVE #1

Schnecksville, PA 18078



WHITEHALL CRAFTSMAN STARTING AT 2546 SF BASEMENT PLAN