

# Chapman Floor Plan

In Ridings at Parkland

## PLAN DETAILS

4 Beds 
 2.5 Baths 
 2,144 Sq Ft  
 2 Story 
 2 Car Garage



Farmhouse Elevation

The Chapman's floorplan will please the most selective of home buyers with a open and versatile design that makes it ideal for everything from relaxing with your family to entertaining friends. Upon entering this home, you'll find a cozy floor plan that is perfect for families of all sizes. The open-concept Kitchen, Dining Nook, and Great Room are all interconnected and effortlessly flow into the guest Foyer, Study, and Dining Room to create an easy traffic flow and a space that will impress everyone who enters this home. The second floor features a well-appointed Owners' Suite that's designed for relaxation. Two walk-in closets and a luxurious Owners' Bath make for a perfect oasis to unwind and recharge. Three additional Bedrooms, a shared Hall Bath, and convenient 2nd floor Laundry Room c ...  
Read More at [tuskeshomes.com](https://tuskeshomes.com)

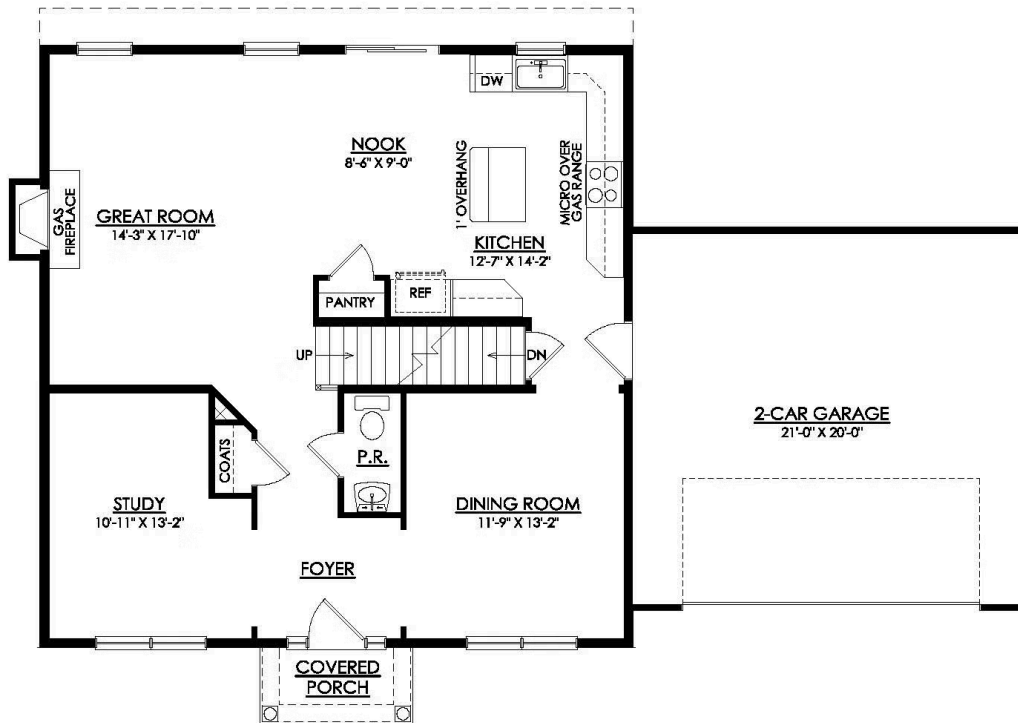
# Chapman Floor Plan

In Ridings at Parkland



# Chapman Floor Plan

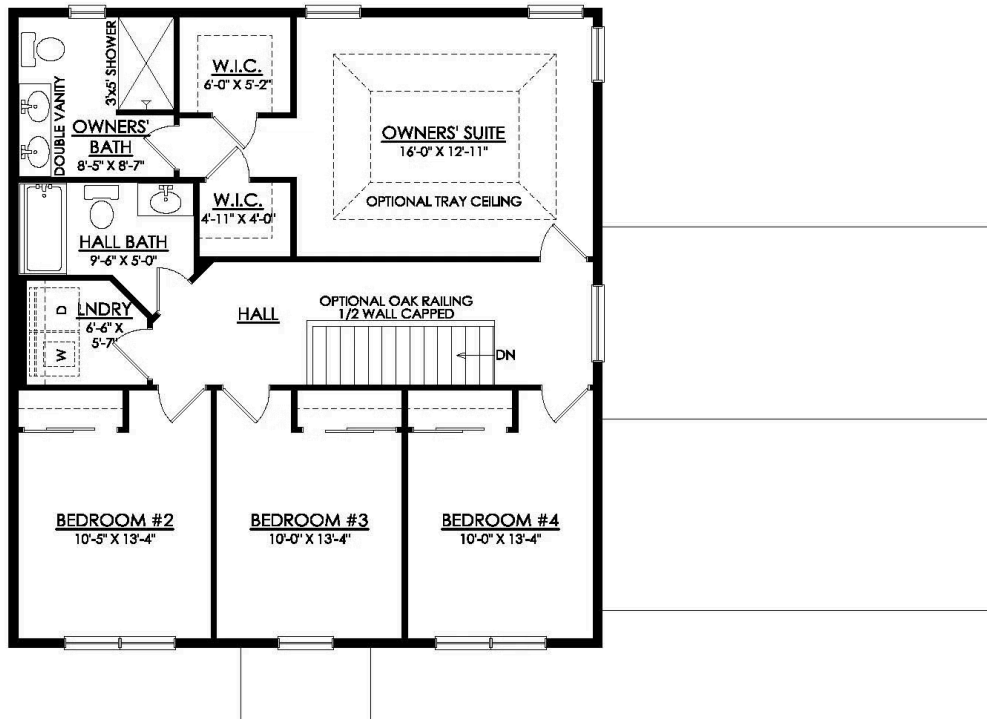
In Ridings at Parkland





# Chapman Floor Plan

In Ridings at Parkland



## CHAPMAN TRADITIONAL 2ND FLOOR PLAN





# Chapman Floor Plan

In Ridings at Parkland



# Chapman Floor Plan

In Ridings at Parkland



# Chapman Floor Plan

In Ridings at Parkland