






Madison Floor Plan

In Ridings at Parkland

PLAN DETAILS

 4 Beds
  2.5 Baths
  2,392 Sq Ft
 2 Story
  2 Car Garage



Traditional Elevation

Welcome to the Madison, a charming and inviting home that's become one of our most popular floor plans. You'll feel right at home as soon as you step into its modern open-concept main living area. The seamless flow between the Dining Room, Kitchen with Nook, and Great Room creates a warm and welcoming atmosphere. The bright and sunny study with French doors and wall of windows is a perfect place to work or learn from home. The welcoming Foyer, convenient Powder Room, and practical Mudroom near the 2-Car Garage are just some of the lovely touches that make the Madison special. Upstairs, the Owners' Suite features a spacious Walk-In Closet and private ensuite Bath. And with three additional Bedrooms, a full Bath, and a 1st-floor Laundry Room, there's plenty of space for everyone!Some images, ... [Read More at tuskeshomes.com](#)

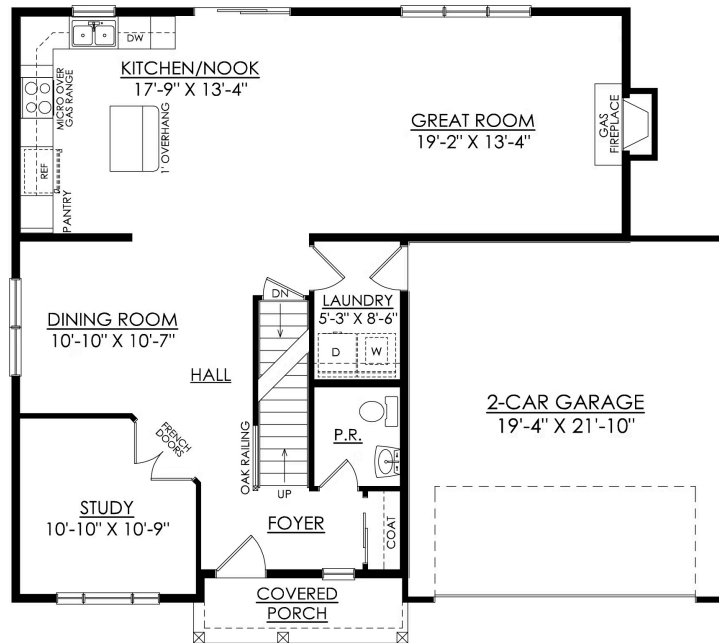
Madison Floor Plan

In Ridings at Parkland



Madison Floor Plan

In Ridings at Parkland

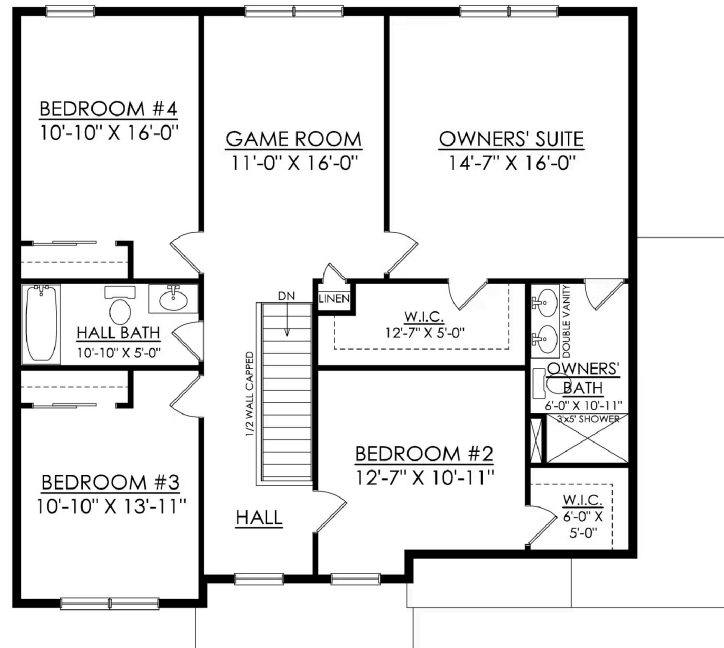


MADISON TRADITIONAL
STARTING AT 2392 SF

1ST FLOOR PLAN

Madison Floor Plan

In Ridings at Parkland



MADISON TRADITIONAL
STARTING AT 2392 SF

2ND FLOOR PLAN



Madison Floor Plan

In Ridings at Parkland



Madison Floor Plan

In Ridings at Parkland