






Mia Floor Plan

In Ridings at Parkland

PLAN DETAILS

 3 Beds
  2.5 Baths
  1,928 Sq Ft
 2 Story
  2 Car Garage

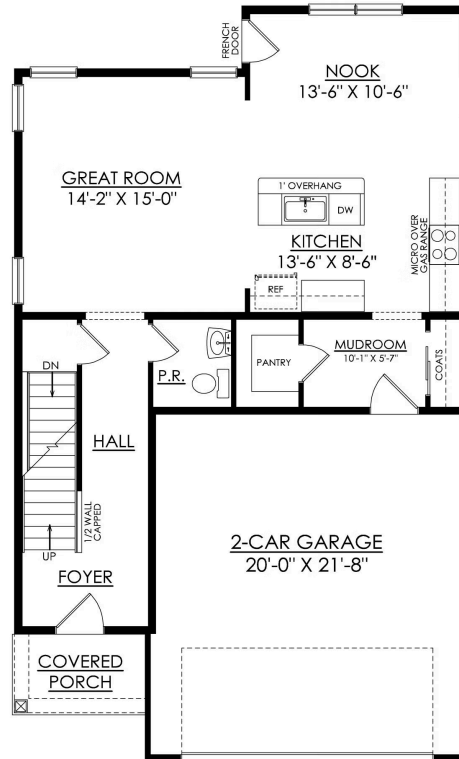


Mia Rendering

Welcome to the Mia, a beautifully designed and thoughtfully crafted home that's perfect for families looking for comfort and convenience. Entering through the foyer, you're greeted by a warm and inviting open-concept Great Room, Kitchen, and Dining Nook. The spacious Kitchen comes equipped with modern appliances, ample countertop space, and a perfect view of the main hub of the home, making entertaining a breeze. A well-located Powder Room and Mudroom with a Walk-in Pantry just off the 2-Car Garage complete the Mia's first floor. Upstairs, you'll find a large Owners' Suite with two walk-in closets and a private Bath, making it the perfect retreat after a long day. Additionally, there are two more Bedrooms with walk-in closets that share a Hall Bath, providing plenty of space for a growing family. Read More at tuskeshomes.com

Mia Floor Plan

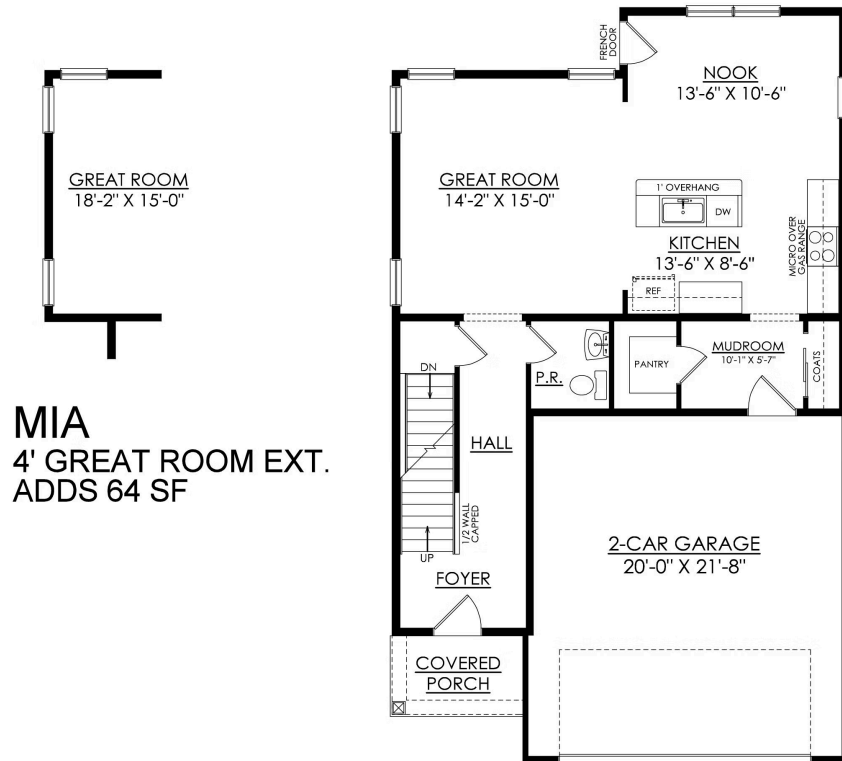
In Ridings at Parkland



MIA 1ST FLOOR PLAN
STARTING AT 1928 SF

Mia Floor Plan

In Ridings at Parkland

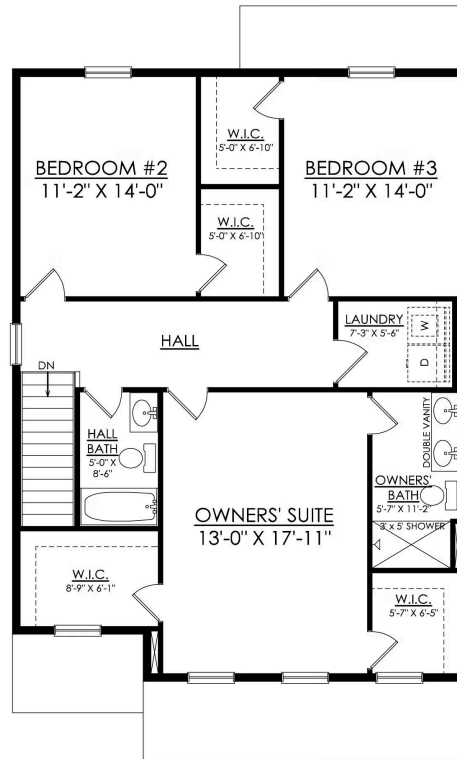


MIA
4' GREAT ROOM EXT.
ADDS 64 SF

MIA 1ST FLOOR PLAN
STARTING AT 1928 SF

Mia Floor Plan

In Ridings at Parkland



MIA 2ND FLOOR PLAN
STARTING AT 1928 SF