

Mia Floor Plan

In Ridings at Parkland from **\$589,900**

PLAN DETAILS

Pricing from **\$589,900**

3 Beds 2.5 Baths 1,928 Sq Ft

2 Story 2 Car Garage



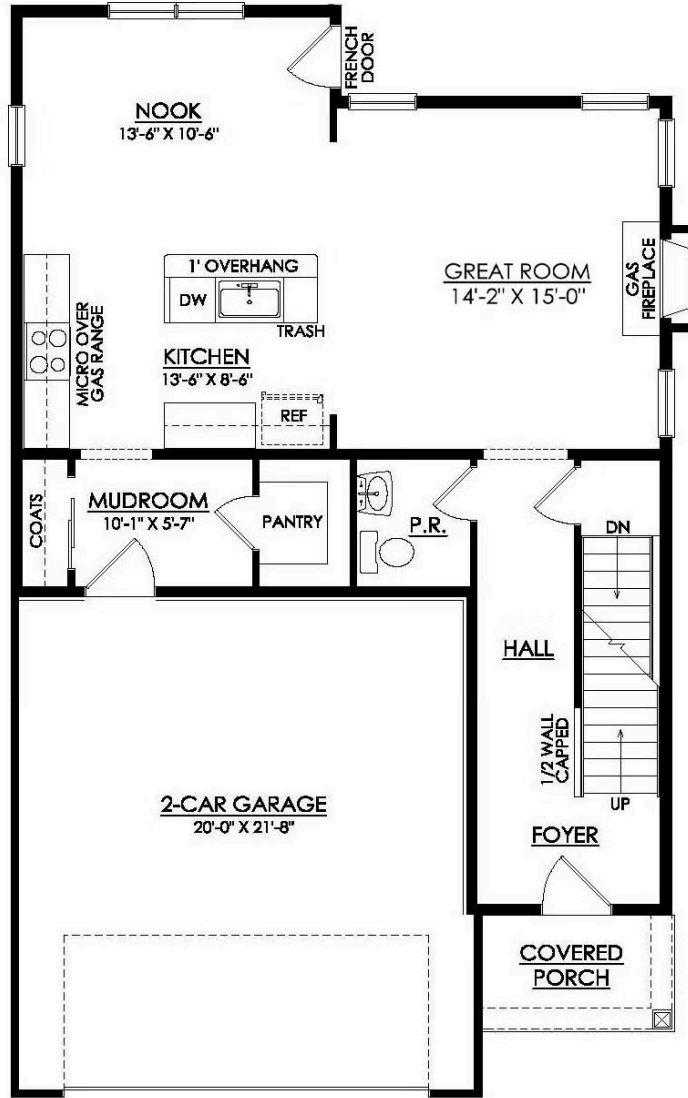
Welcome to the Mia, a beautifully designed and thoughtfully crafted home that's perfect for families looking for comfort and convenience. Entering through the foyer, you're greeted by a warm and inviting open-concept Great Room, Kitchen, and Dining Nook. The spacious Kitchen comes equipped with modern appliances, ample countertop space, and a perfect view of the main hub of the home, making entertaining a breeze. A well-located Powder Room and Mudroom with a Walk-in Pantry just off the 2-Car Garage complete the Mia's first floor. Upstairs, you'll find a large Owners' Suite with two walk-in closets and a private Bath, making it the perfect retreat after a long day. Additionally, there are two more Bedrooms with walk-in closets that share a Hall Bath, providing plenty of space for a growing f ... [Read More at tuskeshomes.com](https://www.tuskeshomes.com)

PLAN FEATURES

- 3 Bedrooms
- 2.5 Bathrooms
- 2-Car Garage
- Starting at 1,928 Square Feet
- Open-Concept Design
- Kitchen Island with Granite or Quartz Countertops
- 42" Wellborn Kitchen Wall Cabinets with Crown Moulding and Full Extension Wood Dovetail Drawers
- GE Stainless Steel Range/Oven, Microwave, and Dishwasher
- Dining Nook with French Door
- 2nd Floor Laundry
- Private Owners' Suite with Walk-in Closet and Bath
- 3'x5' Owners' Shower with Tiled Walls and Soap Shelf
- Optional 4' Extension to Great Room

Mia Floor Plan

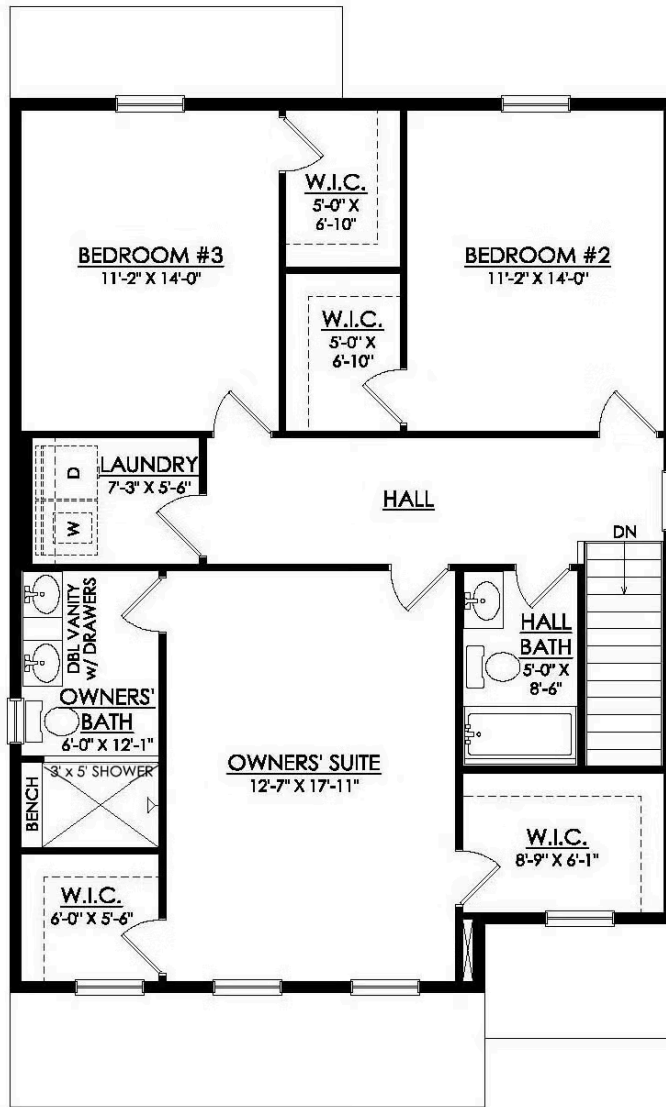
In Ridings at Parkland from \$589,900



MIA 1ST FLOOR PLAN
STARTING AT 1928 SF
PREMIER

Mia Floor Plan

In Ridings at Parkland from \$589,900



MIA 2ND FLOOR PLAN STARTING AT 1928 SF PREMIER

Mia Floor Plan

In Ridings at Parkland from \$589,900

