






# Morgan Floor Plan

In Ridings at Parkland

## PLAN DETAILS

 4 Beds
  2.5 Baths
  2,648 Sq Ft  
 2 Story
  2 Car Garage



Country Elevation

Designed with functionality in mind, the Morgan features a flowing, open-concept Kitchen, Dining Nook, and Great Room that are the heart of this home. As you enter through the 2 Car Garage, you'll find a Mudroom that's perfect for dropping off items like shoes, coats, or anything else you'd prefer to store. Just beyond, the expansive main living area awaits. Windows line the wall of the Great Room, and just beyond is a beautiful Kitchen that will please the pickiest of home chefs. A Foyer, Study, Dining Room/Flex Space, and Powder Room round out the first floor of this gorgeous home. Upstairs you'll find a large Owners' Suite with two Walk-in Closets and a private Bath that's perfect for getting away from it all. The remaining three Bedrooms all have their own walk-in closets and share a fu ... Read More at [tuskeshomes.com](https://tuskeshomes.com)

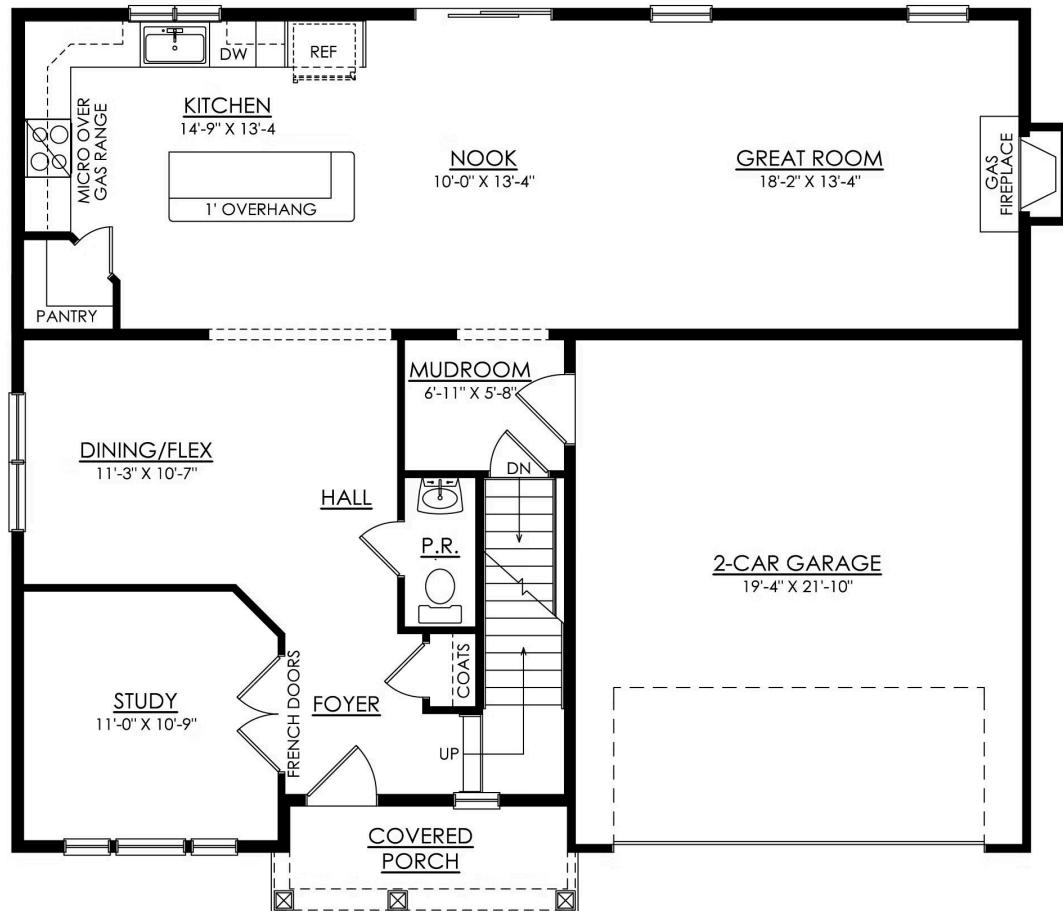
# Morgan Floor Plan

In Ridings at Parkland



# Morgan Floor Plan

In Ridings at Parkland

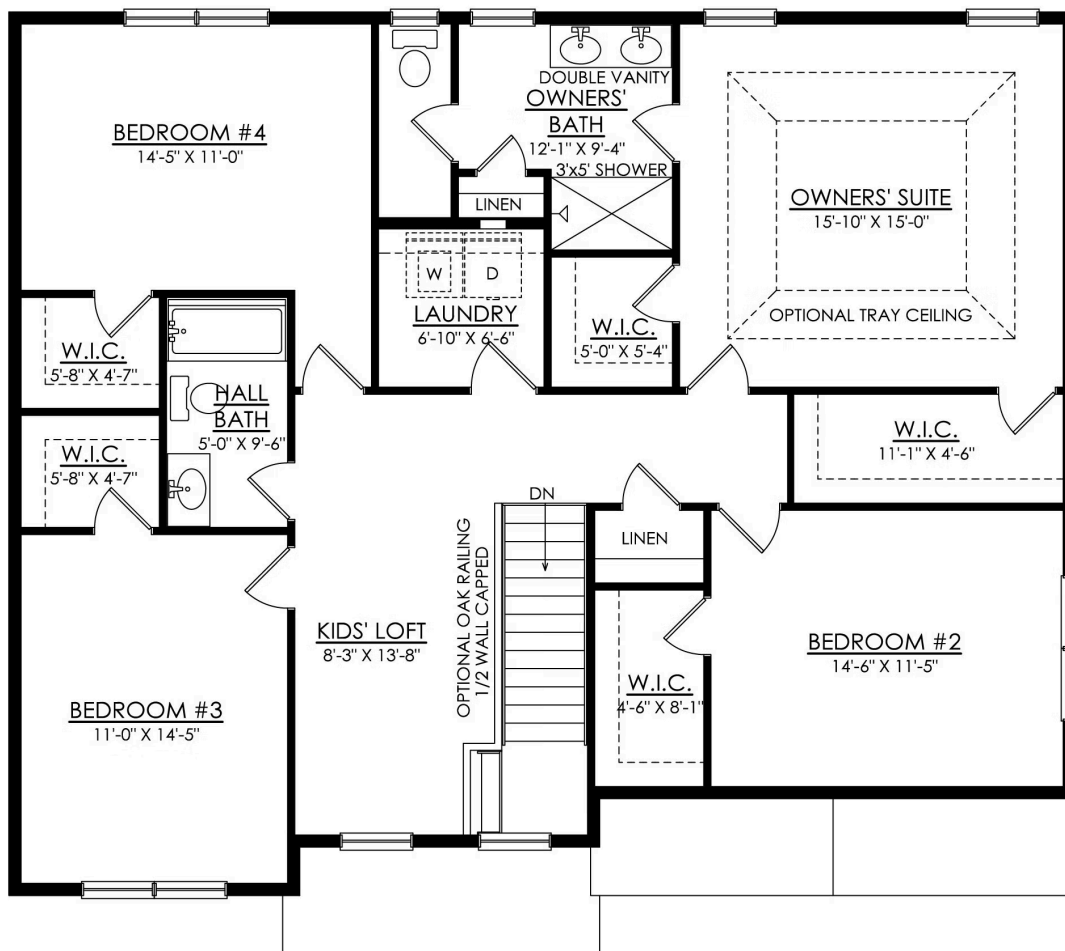


## MORGAN TRADITIONAL 1ST FLOOR PLAN PREMIER



# Morgan Floor Plan

In Ridings at Parkland



## MORGAN TRADITIONAL 2ND FLOOR PLAN PREMIER





# Morgan Floor Plan

In Ridings at Parkland



# Morgan Floor Plan

In Ridings at Parkland