

Pinehurst Floor Plan

In Ridings at Parkland from **\$579,900**

PLAN DETAILS

Pricing from **\$579,900**

3 Beds 2.0 Baths 1,530 Sq Ft

1 Story 2 Car Garage



Pinehurst Traditional

Discover the ultimate home sweet home with the Pinehurst! This cozy ranch-style floor plan is perfect for those seeking a stress-free lifestyle. The open-concept design is both efficient and inviting, making it the perfect space for hosting guests and enjoying quality time with loved ones. The Kitchen, with its island and overhang, is not only functional, but it's also the perfect place for a quick chat over coffee. The Great Room features a wall of windows, allowing natural light to pour in, and offering stunning views of the backyard. Retire to the luxurious Owners' Suite, complete with a generous walk-in closet and a private Bath, featuring a double vanity, roomy shower, and separate linen closet. With two more Bedrooms and a full Hall Bath, the Pinehurst has everything you need for you ... Read More at tuskeshomes.com

PLAN FEATURES

- 3 Bedrooms
- 2 Bathrooms
- 2-Car Garage
- Starting at 1530 Square Feet
- Ranch Style Floor Plan
- Granite or Quartz Kitchen Countertops
- 42" Wellborn Kitchen Wall Cabinets with Crown Moulding and Full Extension Wood Dovetail Drawers
- GE Stainless Steel Range/Oven, Microwave, and Dishwasher
- Mudroom
- Owners' Suite including a Private Bath featuring a Double Vanity
- 3'x5' Owners' Shower with Tiled Walls and Soap Shelf
- Optional Corner Fireplace in Great Room

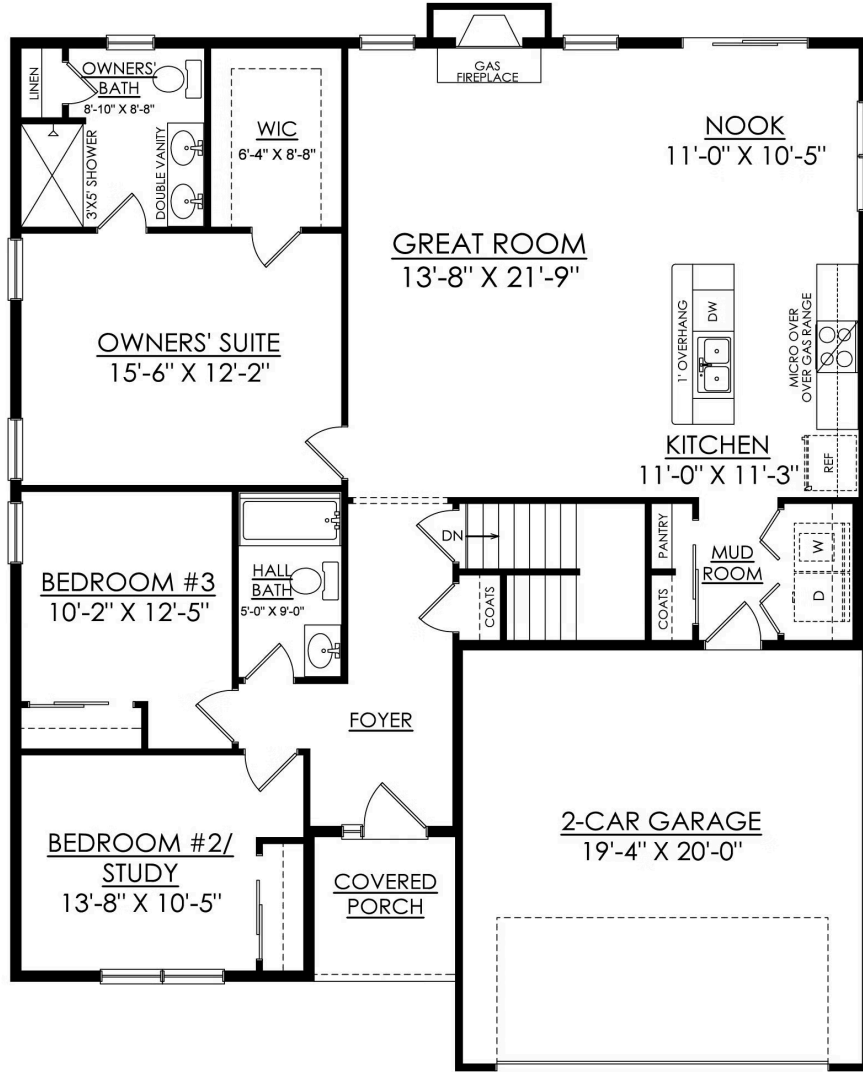
Pinehurst Floor Plan

In Ridings at Parkland from \$579,900



Pinehurst Floor Plan

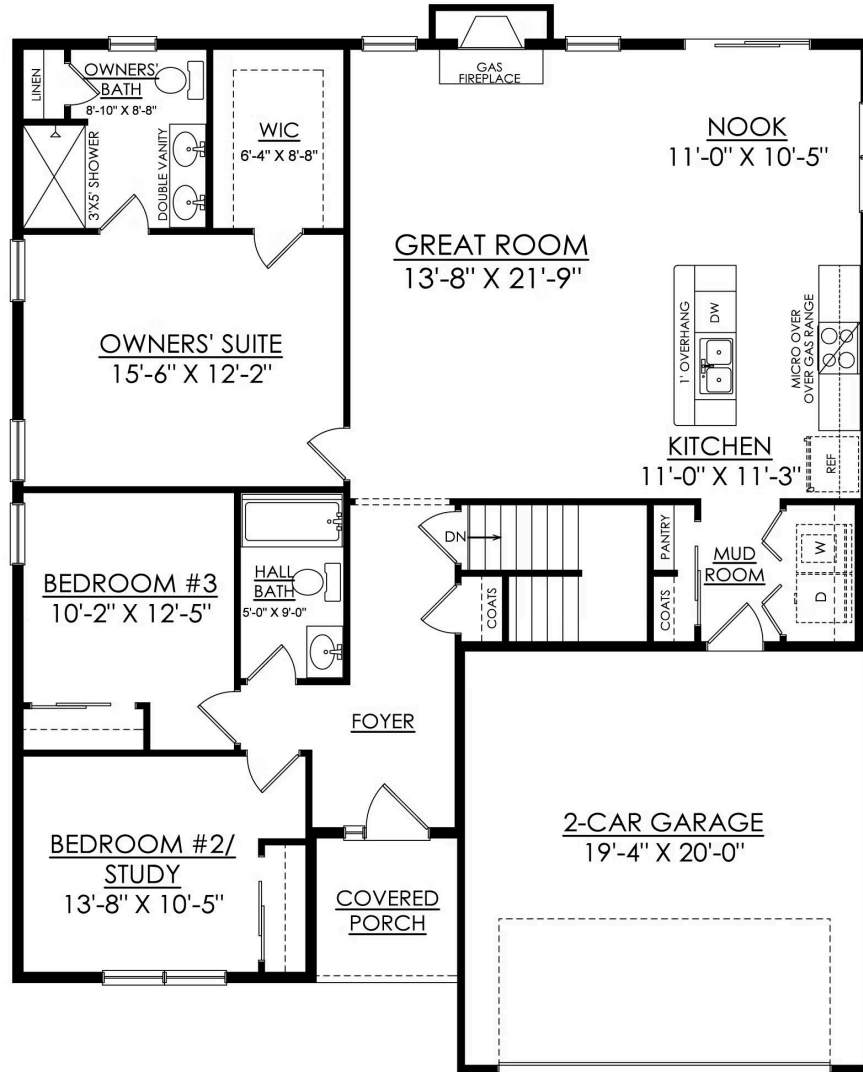
In Ridings at Parkland from \$579,900



PINEHURST TRADITIONAL STARTING AT 1530 SF PREMIER

Pinehurst Floor Plan

In Ridings at Parkland from \$579,900



PINEHURST COUNTRY STARTING AT 1530 SF PREMIER



Pinehurst Floor Plan

In Ridings at Parkland from **\$579,900**