

# Madison Floor Plan

In Estates at Pocono Manor

## PLAN DETAILS

4 Beds
 2.5 Baths
 2,392 Sq Ft  
 2 Story
 2 Car Garage

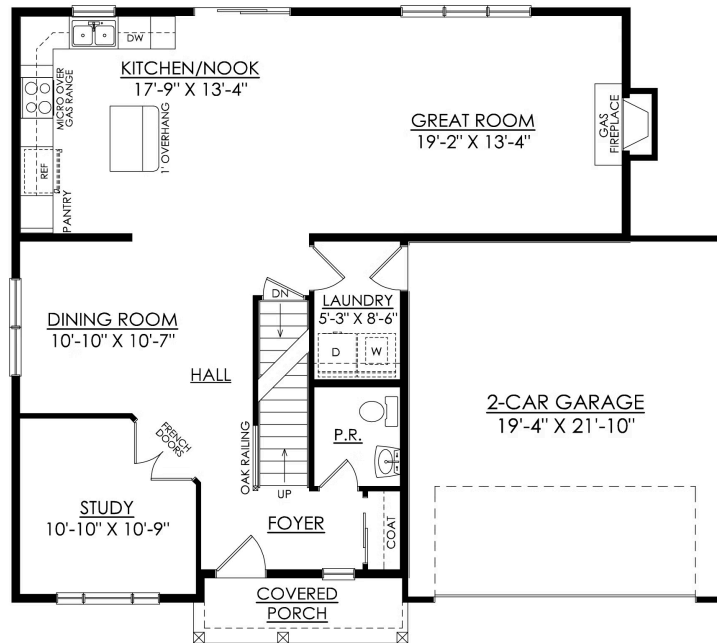


PM-1 Exterior

Welcome to the Madison, a charming and inviting home that's become one of our most popular floorplans. You'll feel right at home as soon as you step into its modern open-concept main living area. The seamless flow between the Dining Room, Kitchen with Nook, and Great Room creates a warm and welcoming atmosphere. The bright and sunny study with French doors and wall of windows is a perfect place to work or learn from home. The welcoming Foyer, convenient Powder Room, and practical Mudroom near the 2-car garage are just some of the lovely touches that make the Madison special. Upstairs, the Owner's Suite awaits with its spacious walk-in closet and private ensuite Bath. And with three additional Bedrooms, a full Bath, and a second-floor Laundry Room, there's plenty of space for everyone!Some ... [Read More at tuskeshomes.com](#)

# Madison Floor Plan

In Estates at Pocono Manor

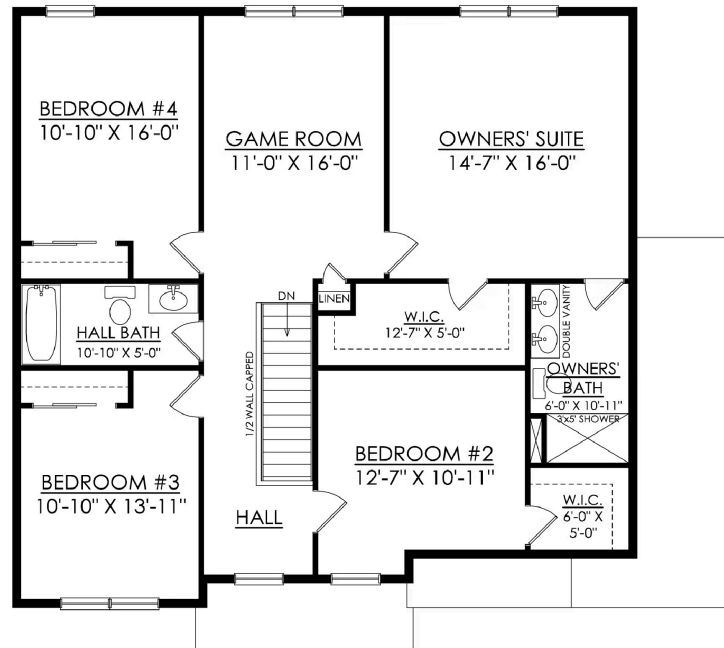


**MADISON TRADITIONAL**  
STARTING AT 2392 SF

**1ST FLOOR PLAN**

# Madison Floor Plan

In Estates at Pocono Manor



**MADISON TRADITIONAL**  
STARTING AT 2392 SF

**2ND FLOOR PLAN**

# Madison Floor Plan

In Estates at Pocono Manor



**MADISON COUNTRY**  
STARTING AT 2392 SF

1ST FLOOR PLAN



# Madison Floor Plan

In Estates at Pocono Manor