






540 Prospect Street #4

Tatamy, PA 18045

HOME DETAILS

-  4 Beds
-  2.5 Baths
-  2,392 Sq Ft
-  2 Story
-  2 Car Garage



TF-04
Rendering

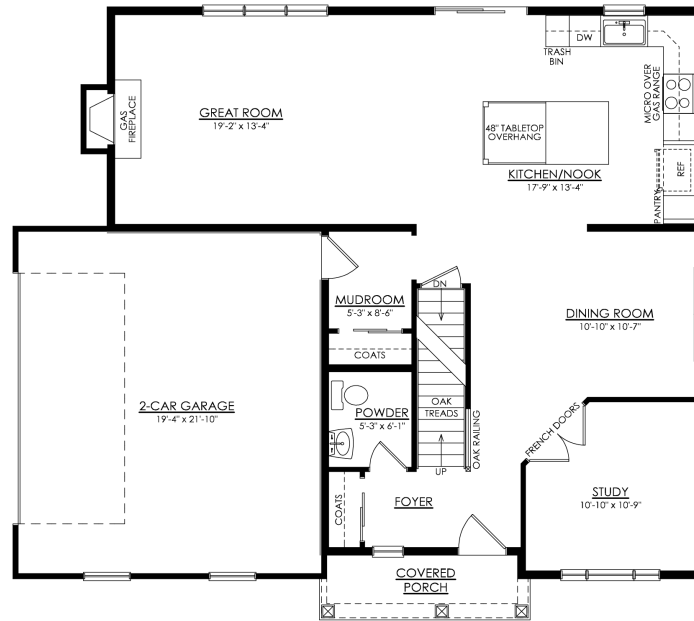
The Madison's open-concept floorplan with a modern feel hits every mark on most buyer's wish lists and has been a favorite for many years. A light and bright Foyer and Study greet you upon entering this home, followed by a Dining Room and well appointed Kitchen that includes an extended island, quartz countertops, stainless steel appliances, upgraded Moen faucet, and recessed lighting.&n... [Read More at tuskeshomes.com](http://tuskeshomes.com)

HOME FEATURES

- 4 Bedrooms
- 2.5 Bathrooms
- 2-Car Garage
- 2392 Square Feet
- Professional Landscaping Package
- Quartz Kitchen Countertops
- Level 1 Tile Backsplash in Kitchen
- Stainless Steel Range/Oven, Refrigerator, Microwave, and Dishwasher
- Recessed Lights in Kitchen and Great Room
- Study
- Private Owner's Suite
- 4' x 6' Fully Tiled Shower in with Silestone Bench, Recessed Light, and Frameless Door in Owner's Bath
- 2nd Floor Laundry Room

540 PROSPECT STREET #4

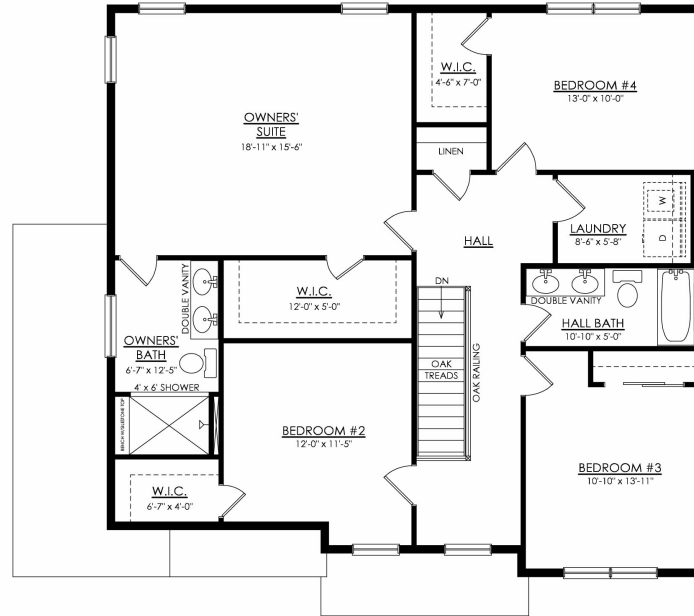
Tatamy, PA 18045



○ 1ST FLOOR PLAN
TF04- MADISON TRADITIONAL

540 PROSPECT STREET #4

Tatamy, PA 18045



○ 2ND FLOOR PLAN
TF04- MADISON TRADITIONAL

540 PROSPECT STREET #4

Tatamy, PA 18045

Madison Traditional

Tatamy Farms
Homesite #4
540 Prospect Street, Tatamy PA 18045



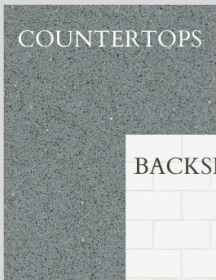
EXTERIOR

KITCHEN

FAUCET



COUNTERTOPS



CABINETS



BACKSPLASH



FLOORING

LUXURY VINYL PLANK



CARPET



LIGHTING

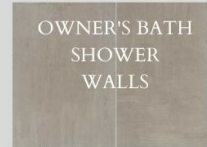


BATHROOMS

OWNER'S BATH FLOORS



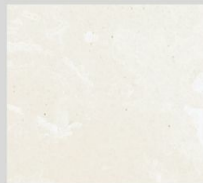
OWNER'S BATH SHOWER WALLS



OWNER'S SHOWER FLOORS



COUNTERTOPS



POWDER ROOM & OWNER'S BATH FAUCETS



CABINETS



Disclaimer: Although every effort is made to show an accurate representation, actual products may vary in color.