

# 590 Prospect Street #9

Tatamy, PA 18045

## HOME DETAILS

- 4 Beds
- 2.5 Baths
- 2,392 Sq Ft
- 2 Story
- 2 Garage



Traditional Elevation

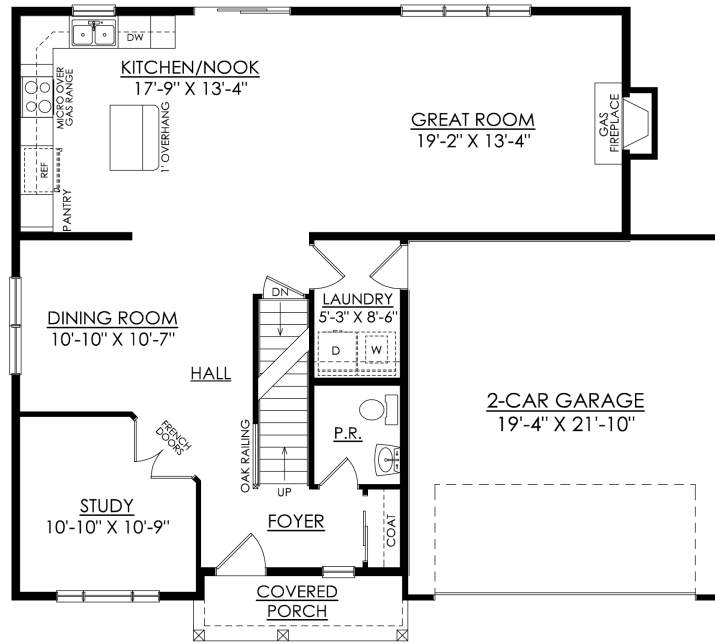
This open-concept home with a modern feel hits every mark on most buyer's wish lists and has been a favorite for many years. The main living area encompasses a Dining Room, Kitchen with a Nook, and Great Room that all flow together in perfect harmony. Those who work from home will appreciate the light and bright Study with its French doors and wall of windows. An elegant Foyer, Powder Ro... [Read More at tuskeshomes.com](http://tuskeshomes.com)

## HOME FEATURES

- 4 Bedrooms
- 2.5 Bathrooms
- 2-Car Garage
- Granite or Quartz Kitchen Countertops
- 36" Stainless Steel Pyramid Range Hood
- Stainless Steel Range/Oven, Microwave, and Dishwasher
- Luxury Vinyl Plank flooring throughout the first floor
- 12' x 16' pressure treated wood deck with steps to grade
- Private Owner's Suite
- Silestone countertops with square undermount sinks in Owner's Bath

# 590 PROSPECT STREET #9

Tatamy, PA 18045

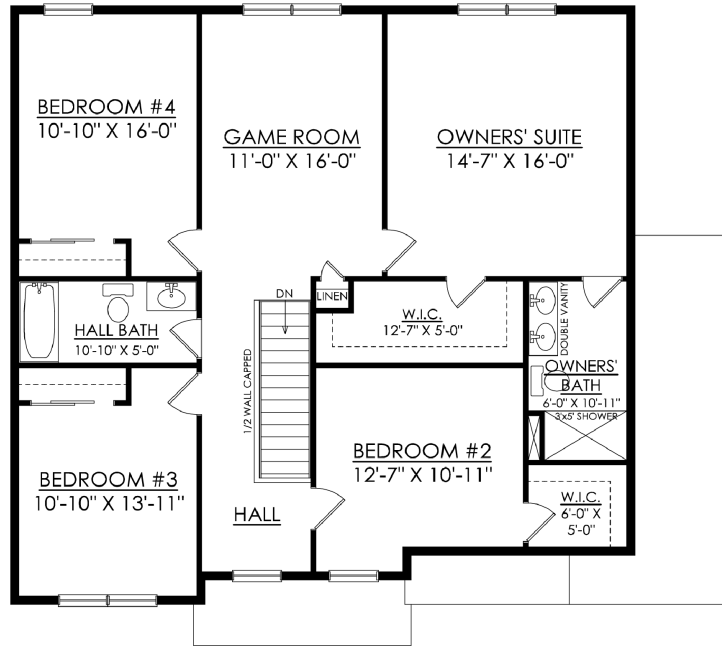


**MADISON TRADITIONAL**  
STARTING AT 2392 SF

1ST FLOOR PLAN

# 590 PROSPECT STREET #9

Tatamy, PA 18045



MADISON TRADITIONAL  
STARTING AT 2392 SF

2ND FLOOR PLAN