

Chapman Floor Plan

In Tatamy Farms from \$483,900

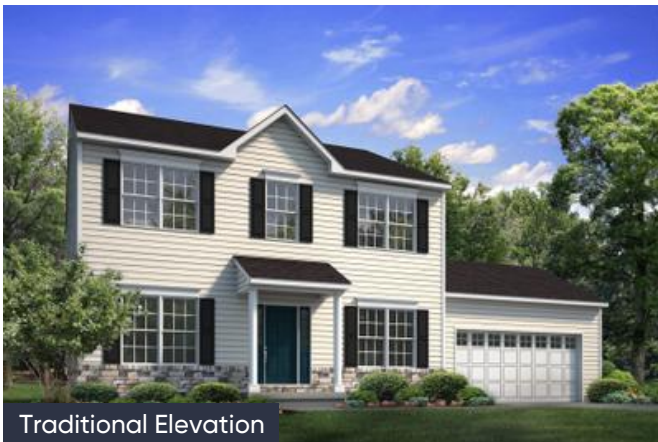
PLAN DETAILS

Pricing from \$483,900

- 4 Beds
- 2.5 Baths
- 2,144 Sq
Ft
- 2 Story
- 2 Garage



Country Elevation

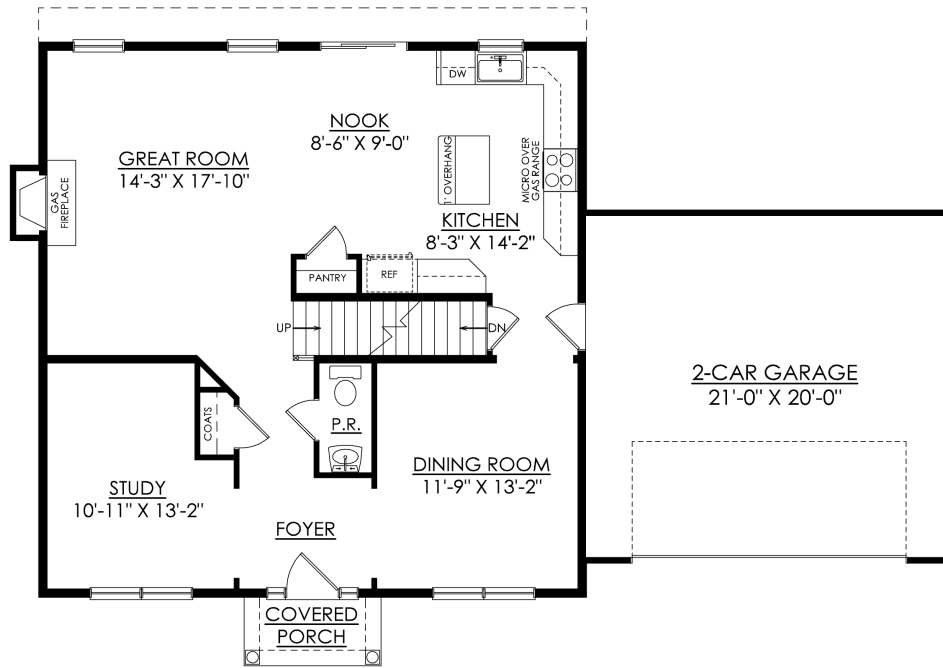


Traditional Elevation

The Chapman's floorplan will please the most selective of home buyers. Upon entering this home, you'll find a cozy floor plan that is perfect for families of all sizes. The open-concept Kitchen, Dining Nook, and Great Room are all interconnected and effortlessly flow into the guest Foyer, Study, and Dining Room to create an easy traffic flow and a space that will impr ... Read More at tuskeshomes.com

Chapman Floor Plan

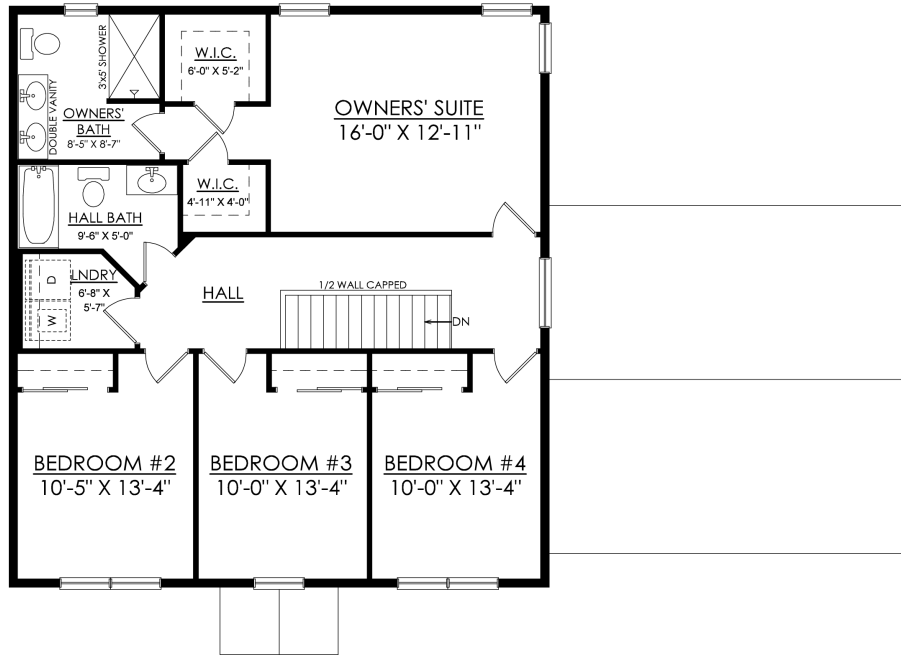
In Tatamy Farms from \$483,900



CHAPMAN TRADITIONAL 1ST FLOOR PLAN
STARTING AT 2144 SF

Chapman Floor Plan

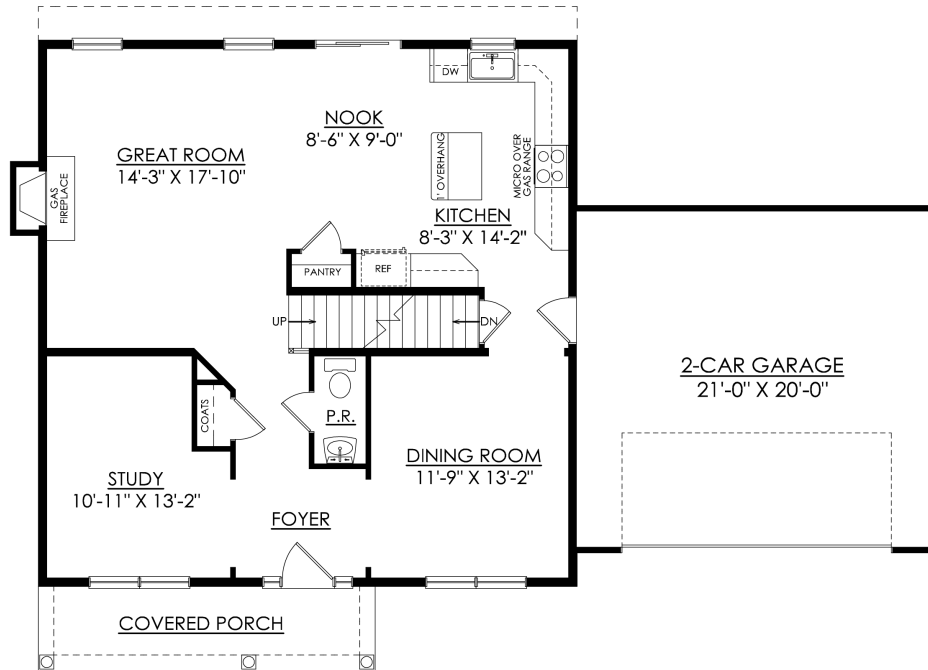
In Tatamy Farms from \$483,900



CHAPMAN TRADITIONAL 2ND FLOOR PLAN
STARTING AT 2144 SF

Chapman Floor Plan

In Tatamy Farms from \$483,900

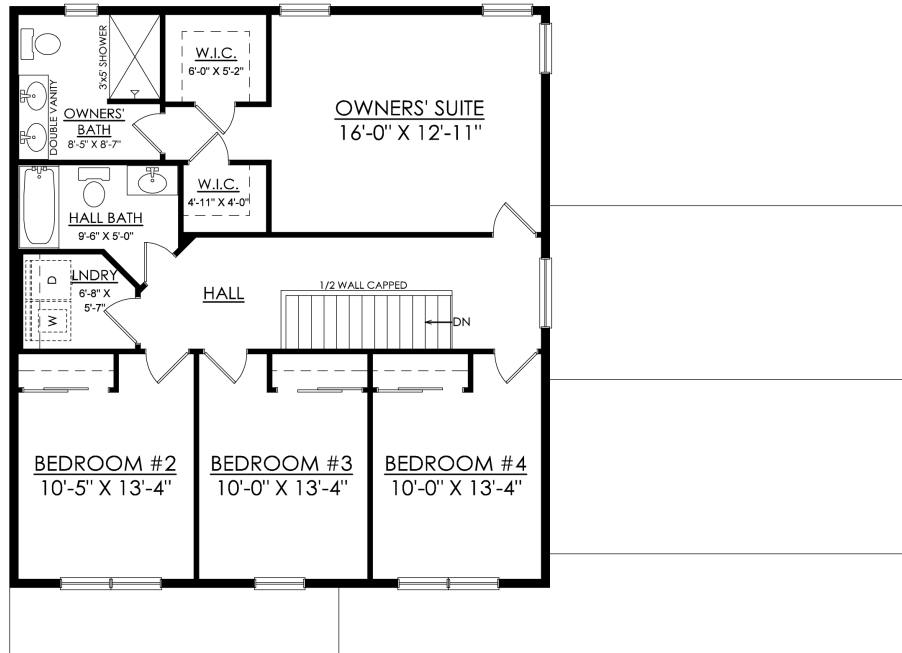


CHAPMAN COUNTRY
STARTING AT 2144 SF

1ST FLOOR PLAN

Chapman Floor Plan

In Tatamy Farms from \$483,900

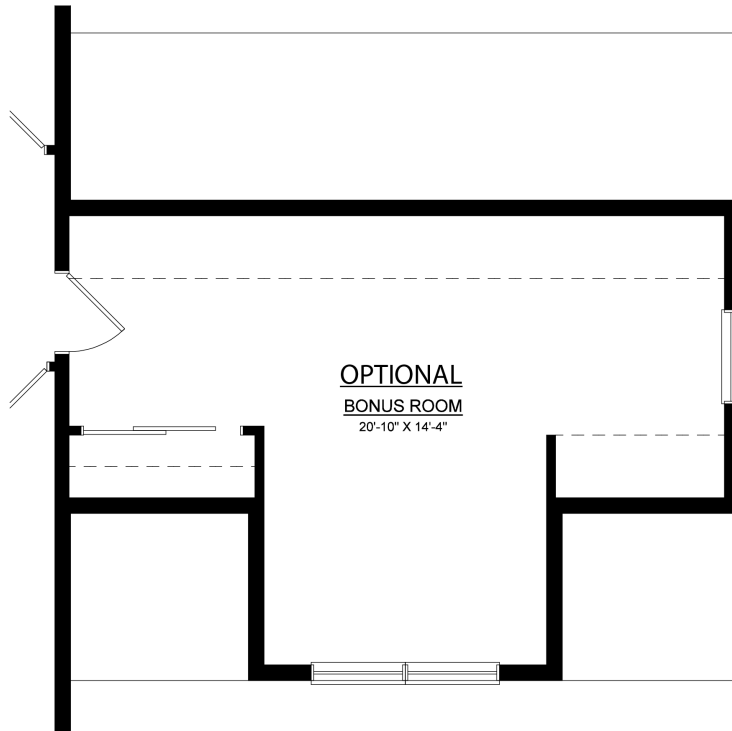


CHAPMAN COUNTRY
STARTING AT 2144 SF

2ND FLOOR PLAN

Chapman Floor Plan

In Tatamy Farms from \$483,900



CHAPMAN
BONUS ROOM