

# Bellwood Floor Plan

In The Village at Hobson Square from **\$757,900**

## PLAN DETAILS

Pricing from **\$757,900**

 4 Beds  2.5 Baths  2,640 Sq Ft

 2 Story  2 Car Garage



Traditional Elevation

The Bellwood's open design and versatile space offers plenty of room for day-to-day living and entertaining. Upon entering The Bellwood, you're greeted by an expansive and airy Foyer, a formal Dining Room, and private Study. Just beyond lies the inter-connected Great Room, Kitchen, and Dining Nook, allowing you to entertain your guests with ease. The Kitchen features an island with an overhang for extra seating, plus a convenient walk-in pantry for organizing your essentials. The Great Room includes a fireplace which can be framed with two optional windows, allowing natural light to illuminate your home. A Mud Room, Laundry Room, 2-Car Garage, and Powder Room finish off the first floor. Head upstairs to the Owners' Suite, where you'll find a massive walk-in closet and unique Owners' Bath la ... Read More at [tuskeshomes.com](http://tuskeshomes.com)

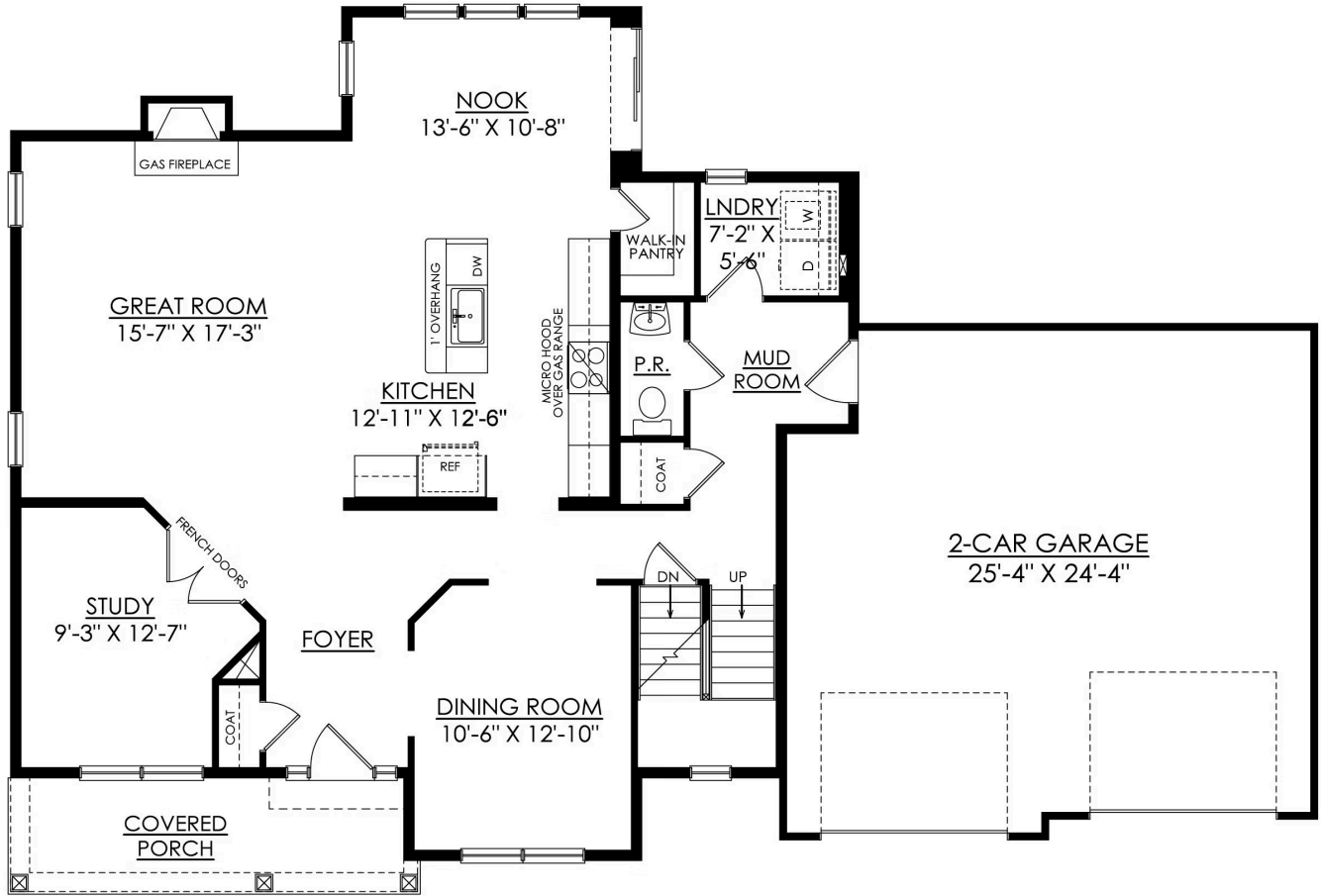
# Bellwood Floor Plan

In The Village at Hobson Square from \$757,900



# Bellwood Floor Plan

In The Village at Hobson Square from \$757,900



**BELLWOOD TRADITIONAL**  
STARTING AT 2640 SF  
PREMIER

1ST FLOOR PLAN

# Bellwood Floor Plan

In The Village at Hobson Square from \$757,900



**BELLWOOD TRADITIONAL**  
STARTING AT 2640 SF  
PREMIER

**2ND FLOOR PLAN**



# Bellwood Floor Plan

In The Village at Hobson Square from **\$757,900**



# Bellwood Floor Plan

In The Village at Hobson Square from **\$757,900**



# Bellwood Floor Plan

In The Village at Hobson Square from **\$757,900**



# Bellwood Floor Plan

In The Village at Hobson Square from **\$757,900**



# Bellwood Floor Plan

In The Village at Hobson Square from **\$757,900**