

Breckenridge Floor Plan

In The Village at Hobson Square from **\$777,900**

PLAN DETAILS

Pricing from **\$777,900**

4 Beds 2.5 Baths 2,948 Sq Ft

2 Story 2 Car Garage



Traditional Elevation

The Breckenridge is a luxurious single-family home with over 2,900 sq ft of living space, perfect for those who appreciate fine living and require extra room. Enjoy entertaining guests in the beautiful 2-story Great Room or cozy up in the nearby Living Room. The spacious Kitchen features ample counter space with versatile configurations. Host formal dinners in the elegant Dining Room or work from home in the private Study with a convenient nearby Powder Room. The lavish Owners' Suite is situated on the second floor, offering a Sitting Room and a private full Bathroom for maximum comfort. Additionally, three more generously sized Bedrooms share a hall bath, with a convenient second-floor Laundry Room nearby. Need additional space? The ever-popular Breckenridge Grande plan provides an al ...
Read More at tuskeshomes.com

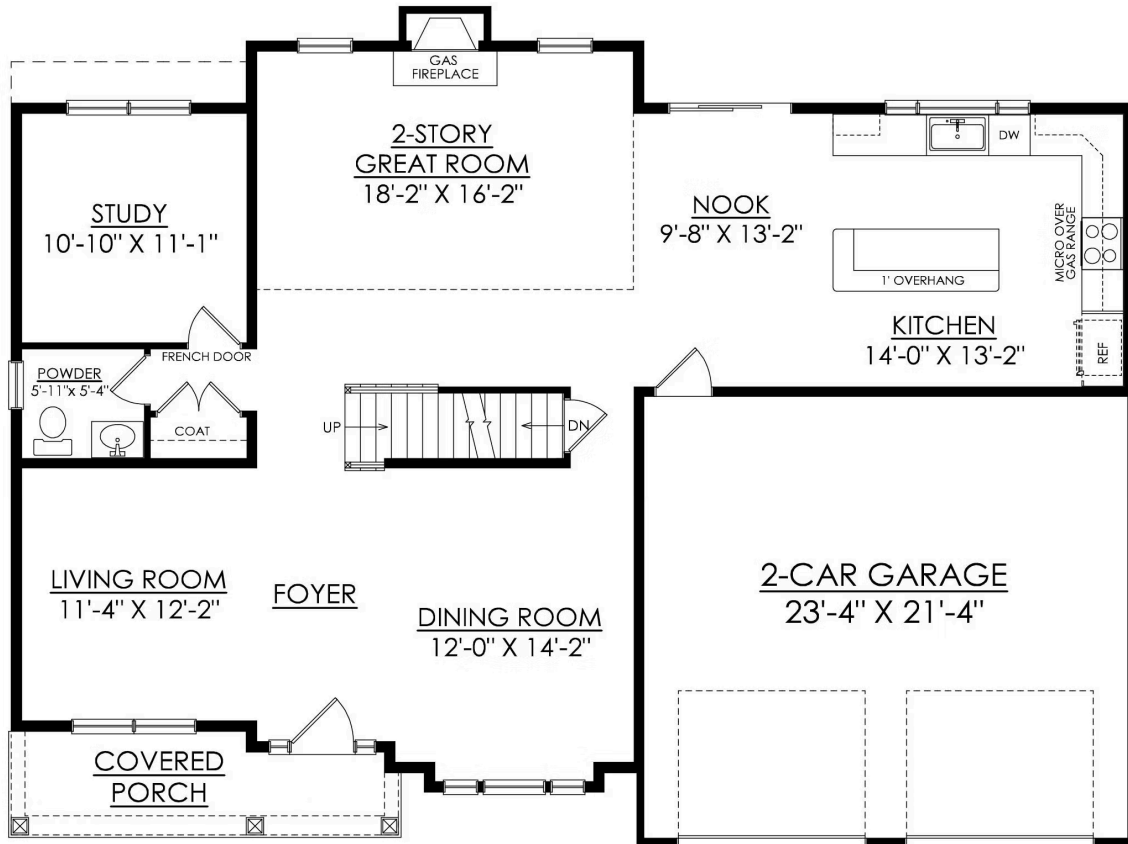
Breckenridge Floor Plan

In The Village at Hobson Square from \$777,900



Breckenridge Floor Plan

In The Village at Hobson Square from \$777,900



BRECKENRIDGE TRADITIONAL
STARTING AT 2954 SF
PREMIER

1ST FLOOR PLAN

Breckenridge Floor Plan

In The Village at Hobson Square from \$777,900



BRECKENRIDGE TRADITIONAL
STARTING AT 2954 SF
PREMIER

2ND FLOOR PLAN



Breckenridge Floor Plan

In The Village at Hobson Square from **\$777,900**



Breckenridge Floor Plan

In The Village at Hobson Square from **\$777,900**



Breckenridge Floor Plan

In The Village at Hobson Square from **\$777,900**



Breckenridge Floor Plan

In The Village at Hobson Square from **\$777,900**



Breckenridge Floor Plan

In The Village at Hobson Square from **\$777,900**



Breckenridge Floor Plan

In The Village at Hobson Square from **\$777,900**



Breckenridge Floor Plan

In The Village at Hobson Square from **\$777,900**



Breckenridge Floor Plan

In The Village at Hobson Square from **\$777,900**